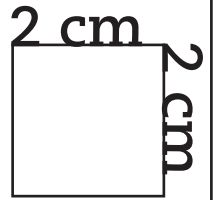


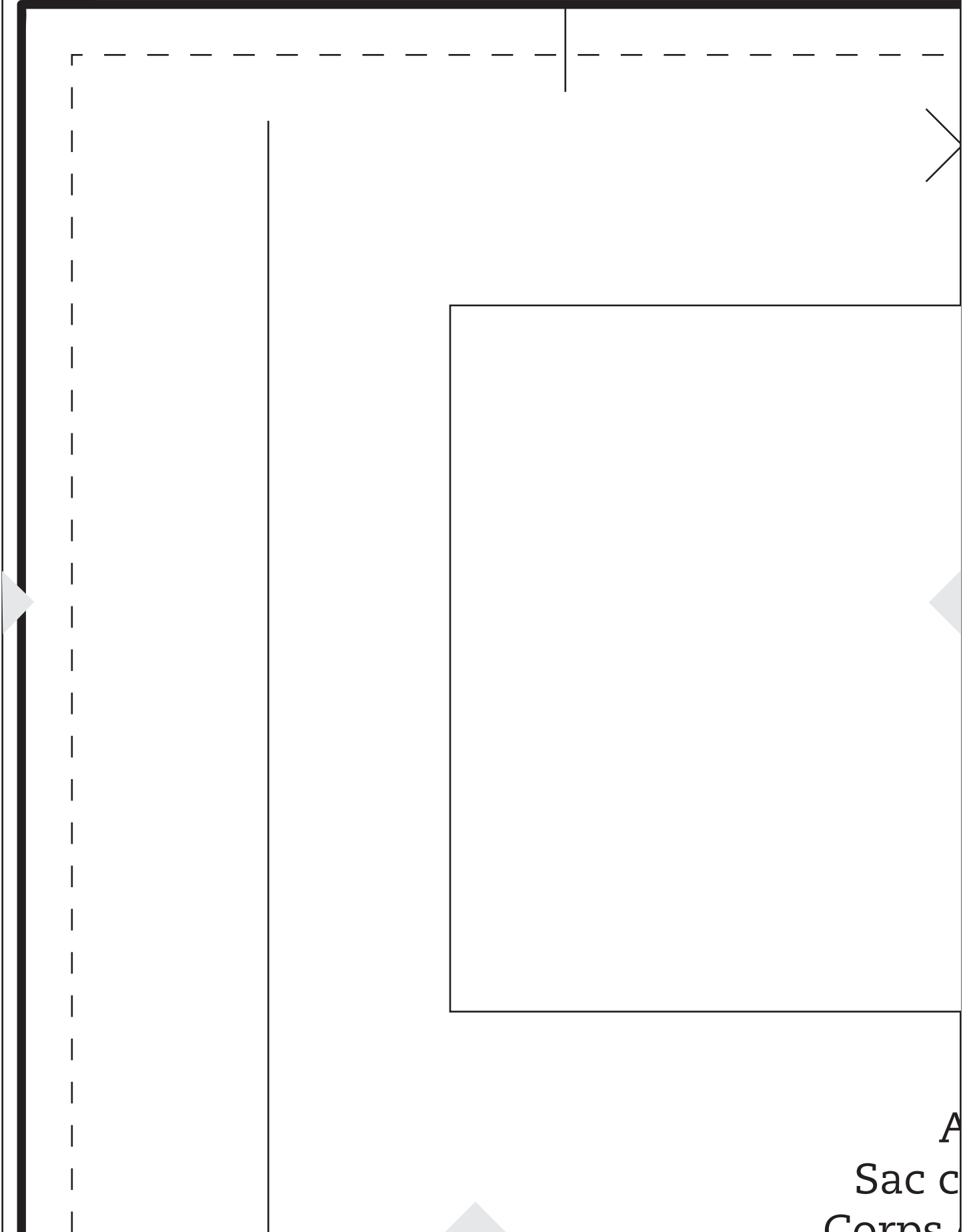
A1

Mon sac cabas



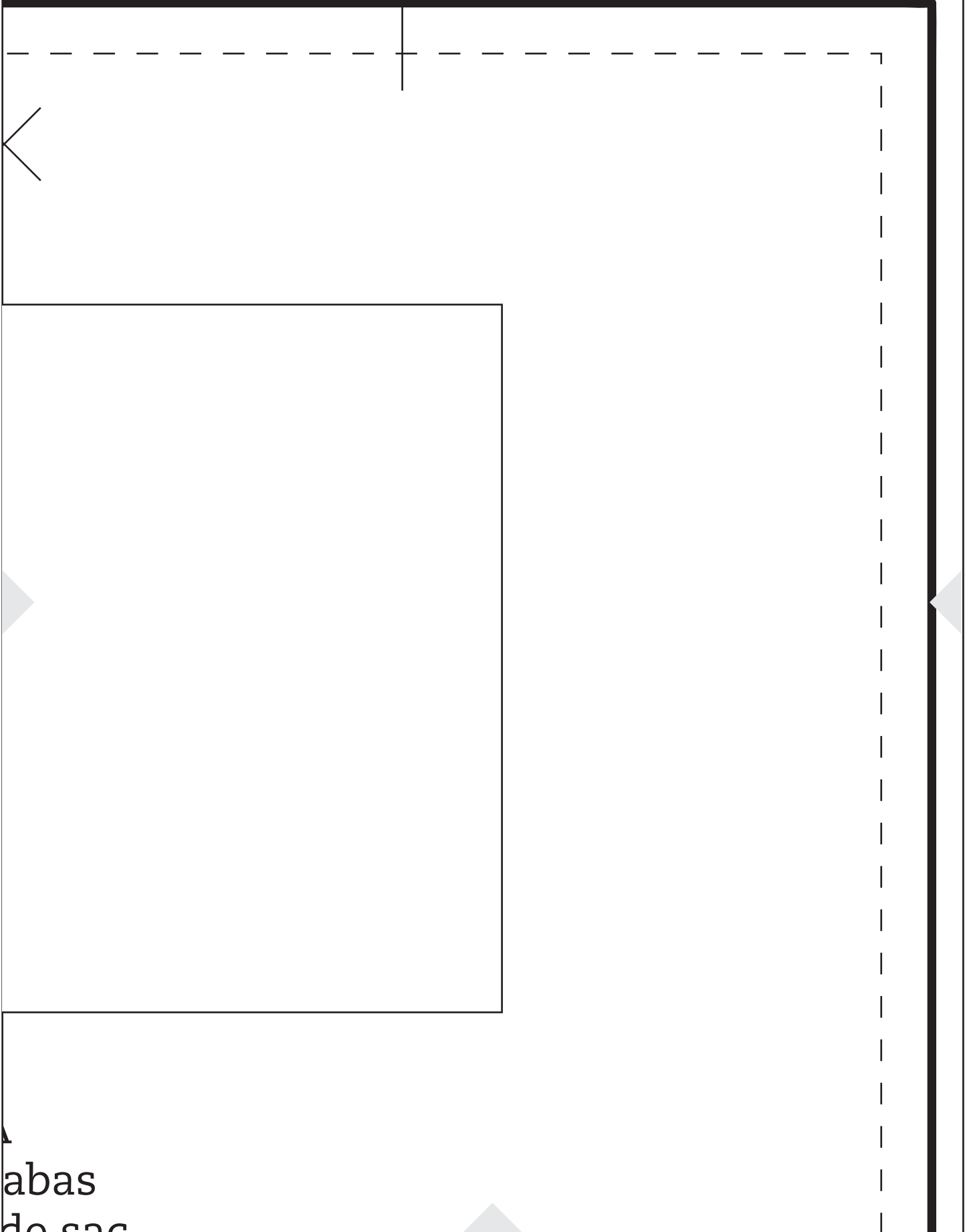
B
Sac cabas
Côtés du sac
2 x dans le tissu principal
2 x dans la doublure

A2



A
Sac c
Corns

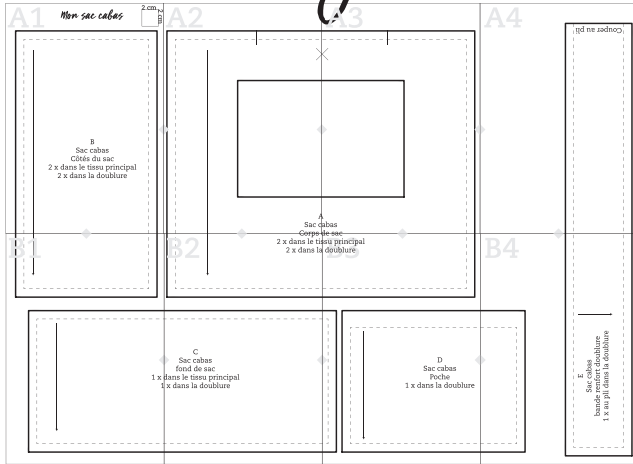
A3



abas
de sac

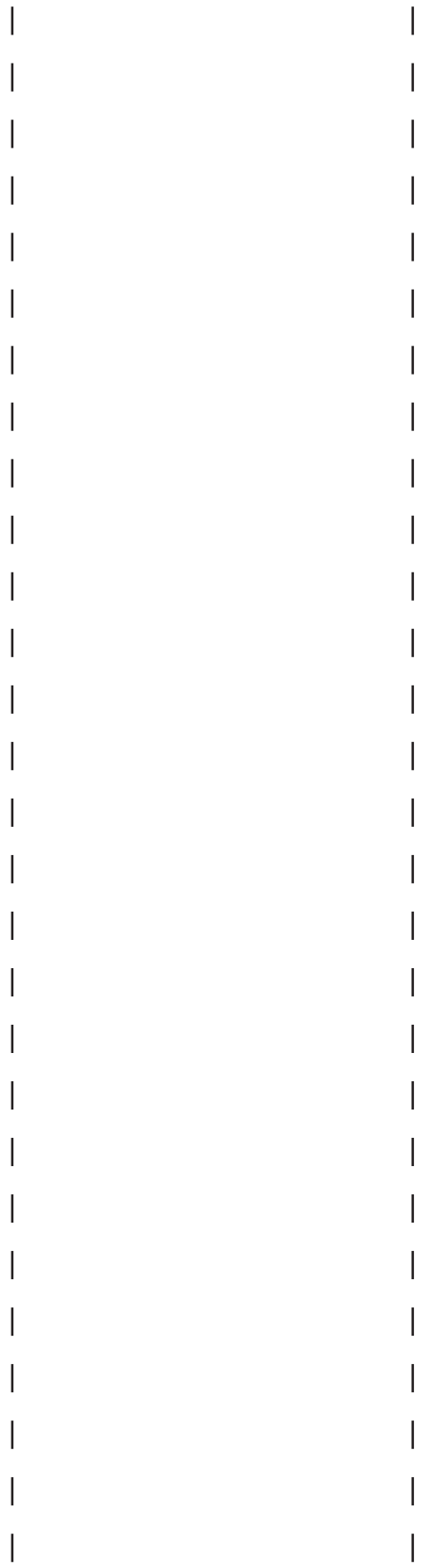
A4

Grille d'assemblage



**Les valeurs de couture
sont comprises dans le
patron.**

Couper au pli



B1



1 x 1
1

B2

Corps
2 x dans le tis
2 x dans la



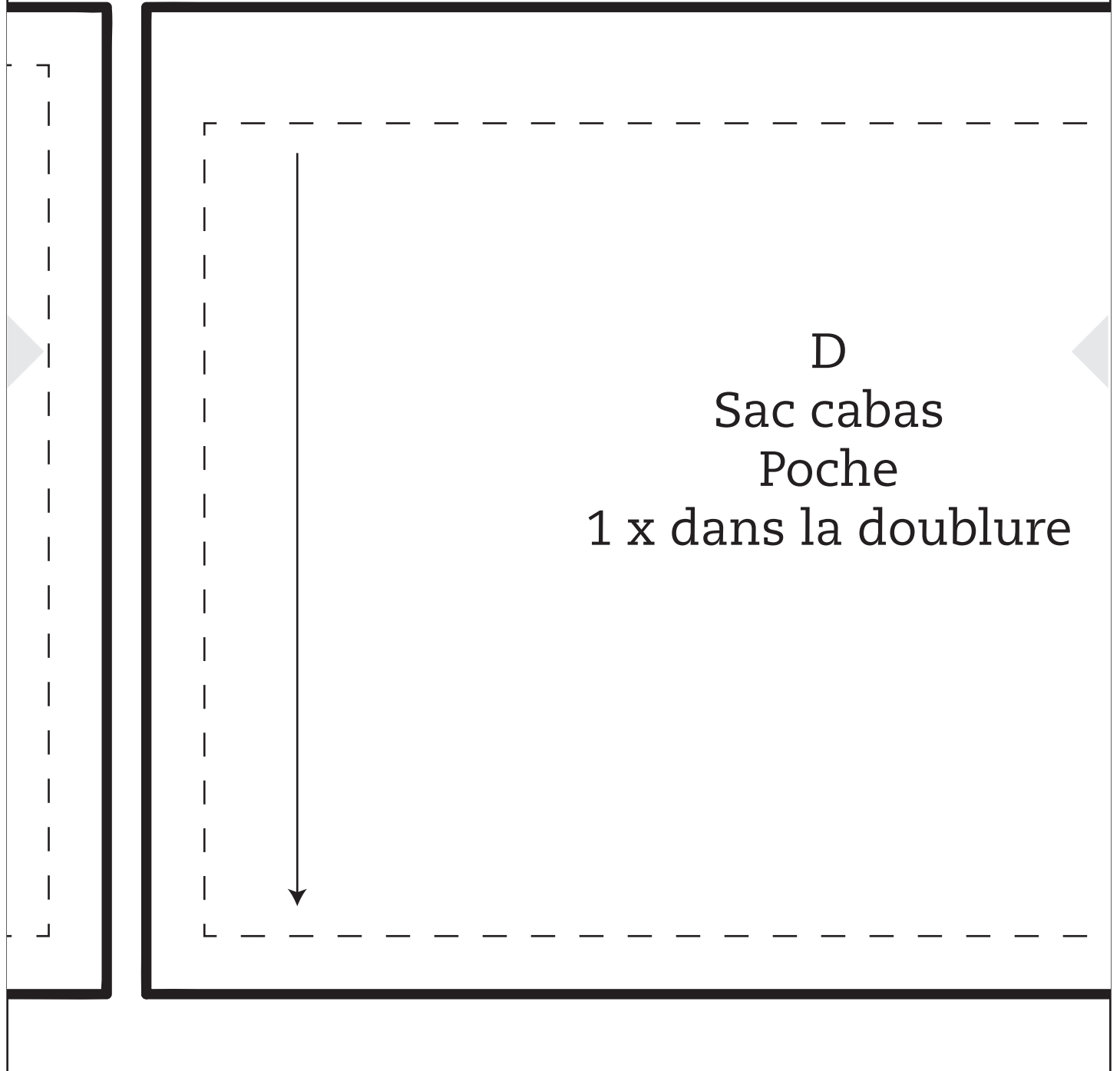
C

Sac cabas
fond de sac

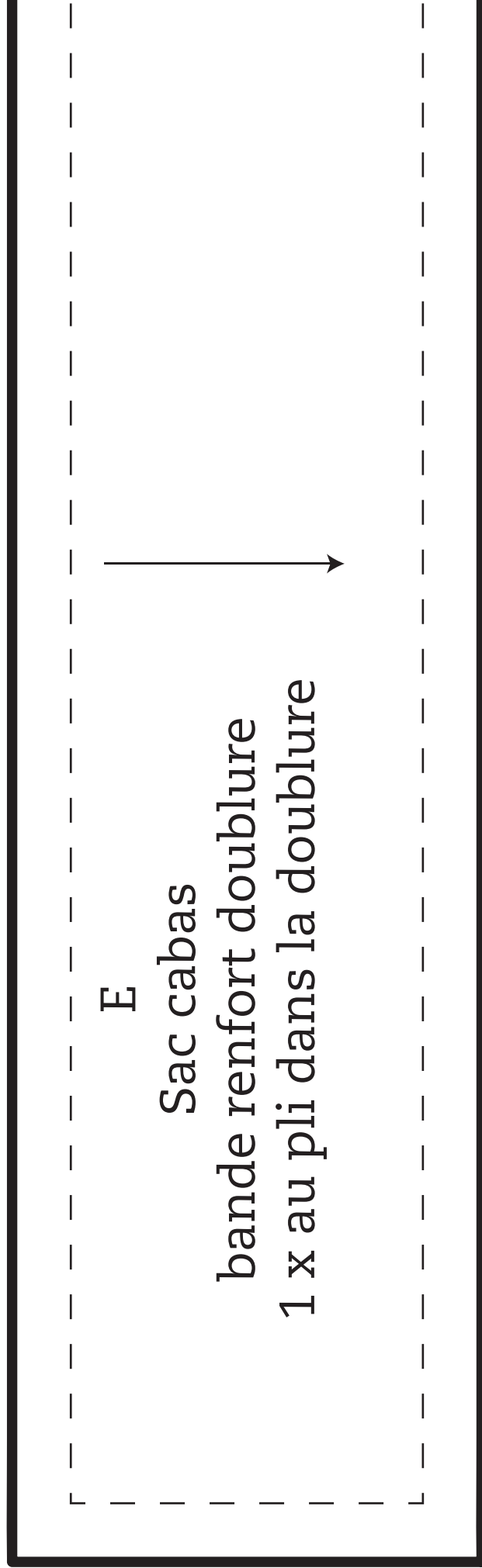
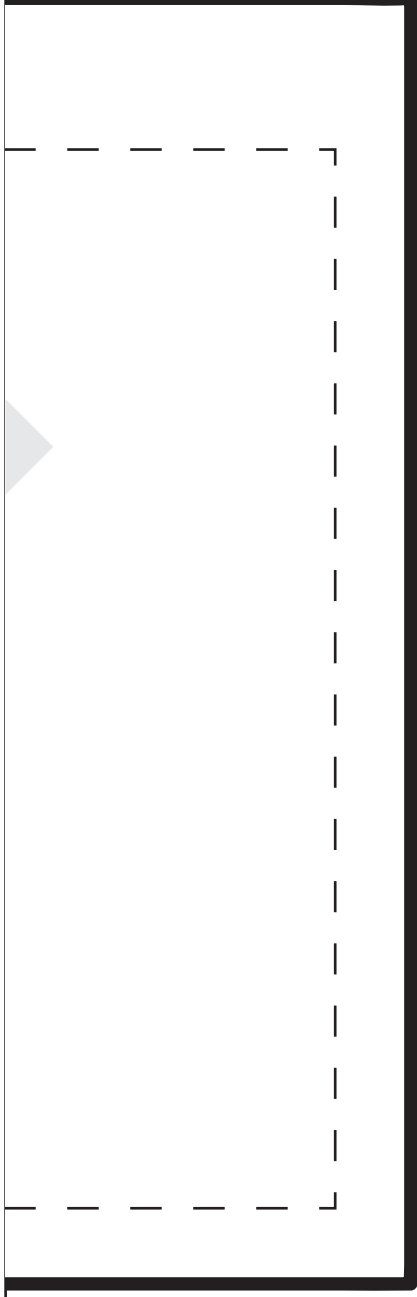
dans le tissu principal
x dans la doublure

le sac

ssu principal
doublure



B4



E

Sac cabas
bande renfort doublure
1 x au pli dans la doublure