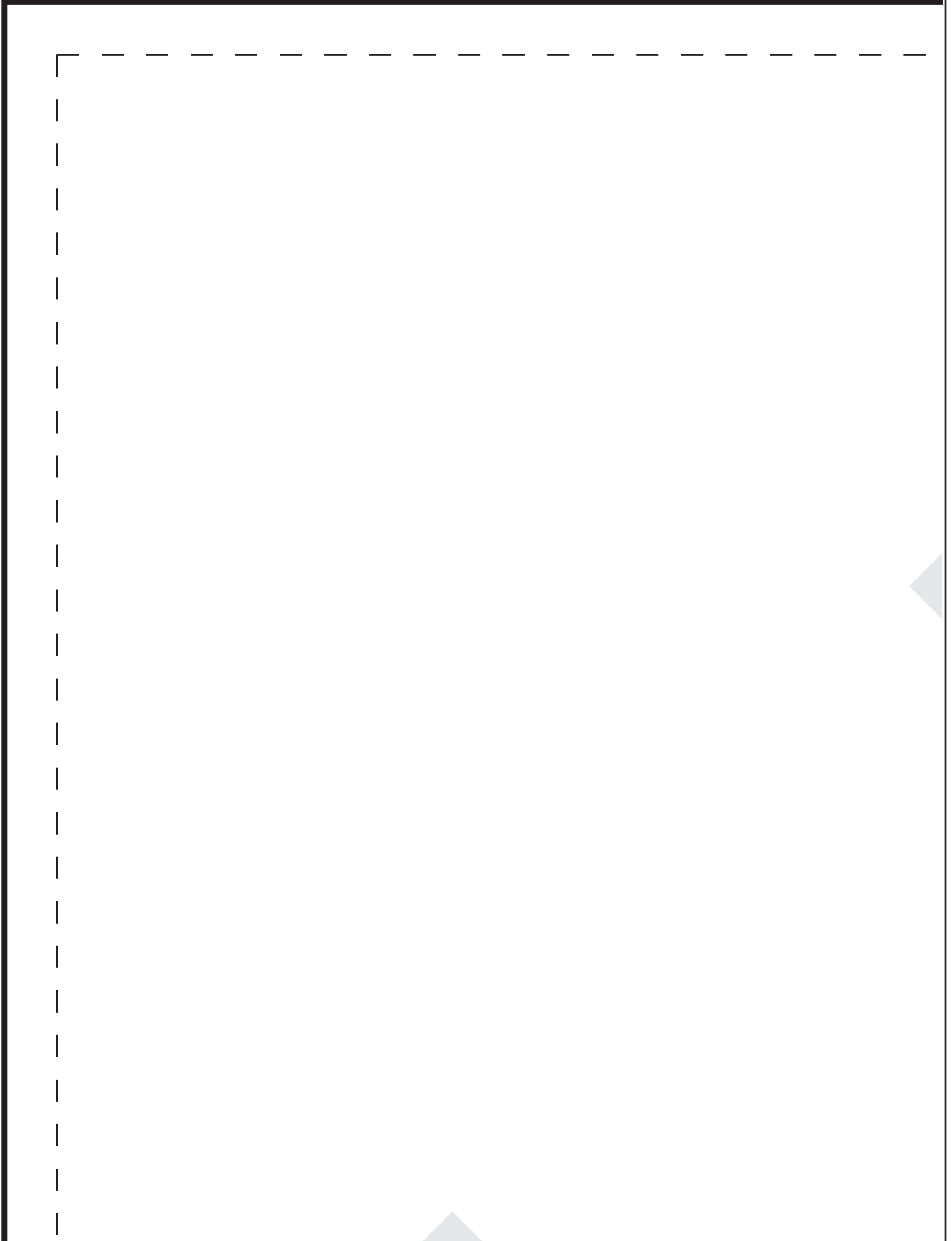
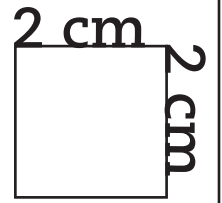
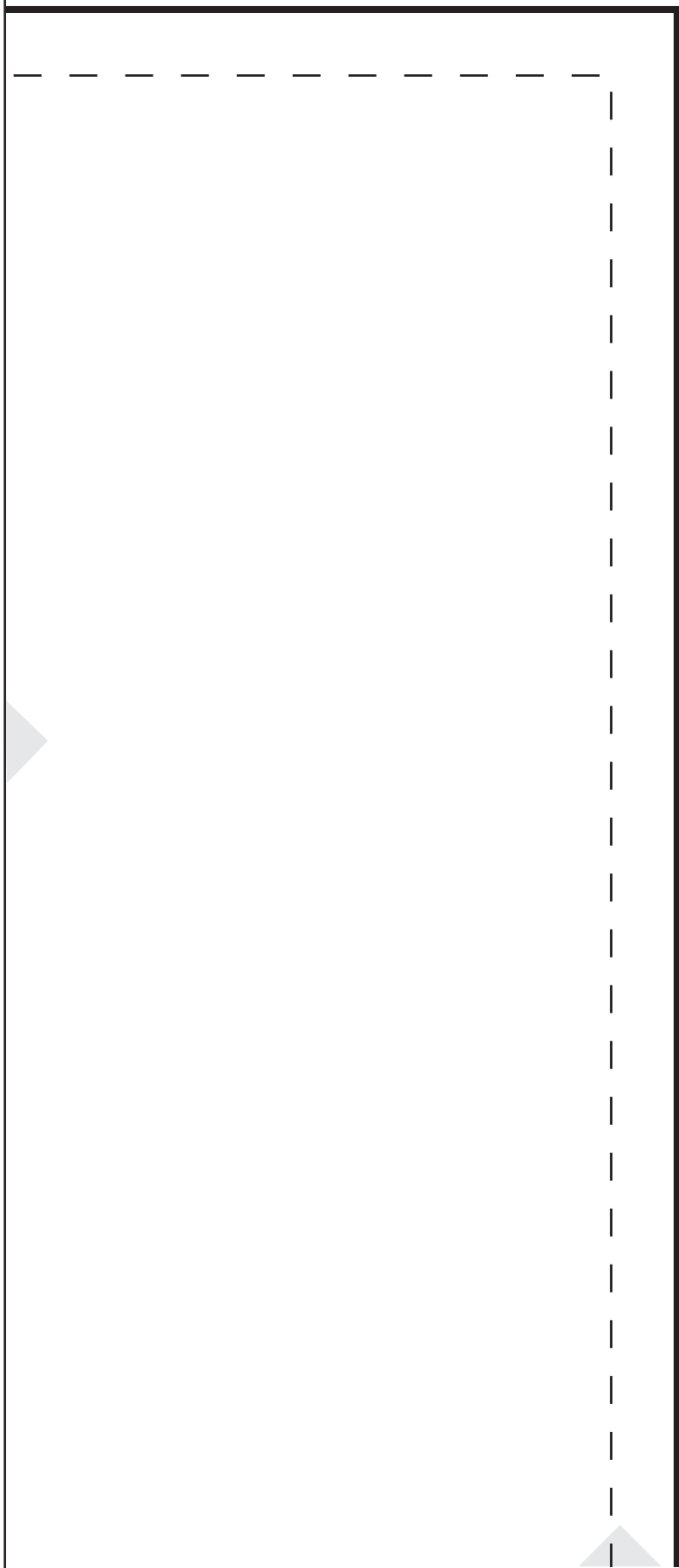


A1

Ma robe tablier



A2

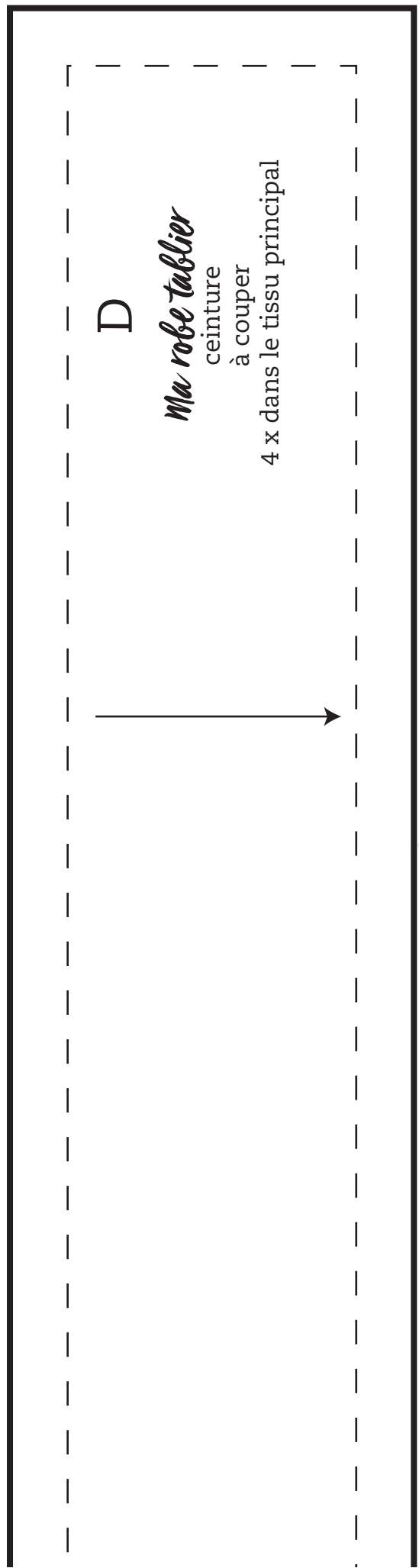


D

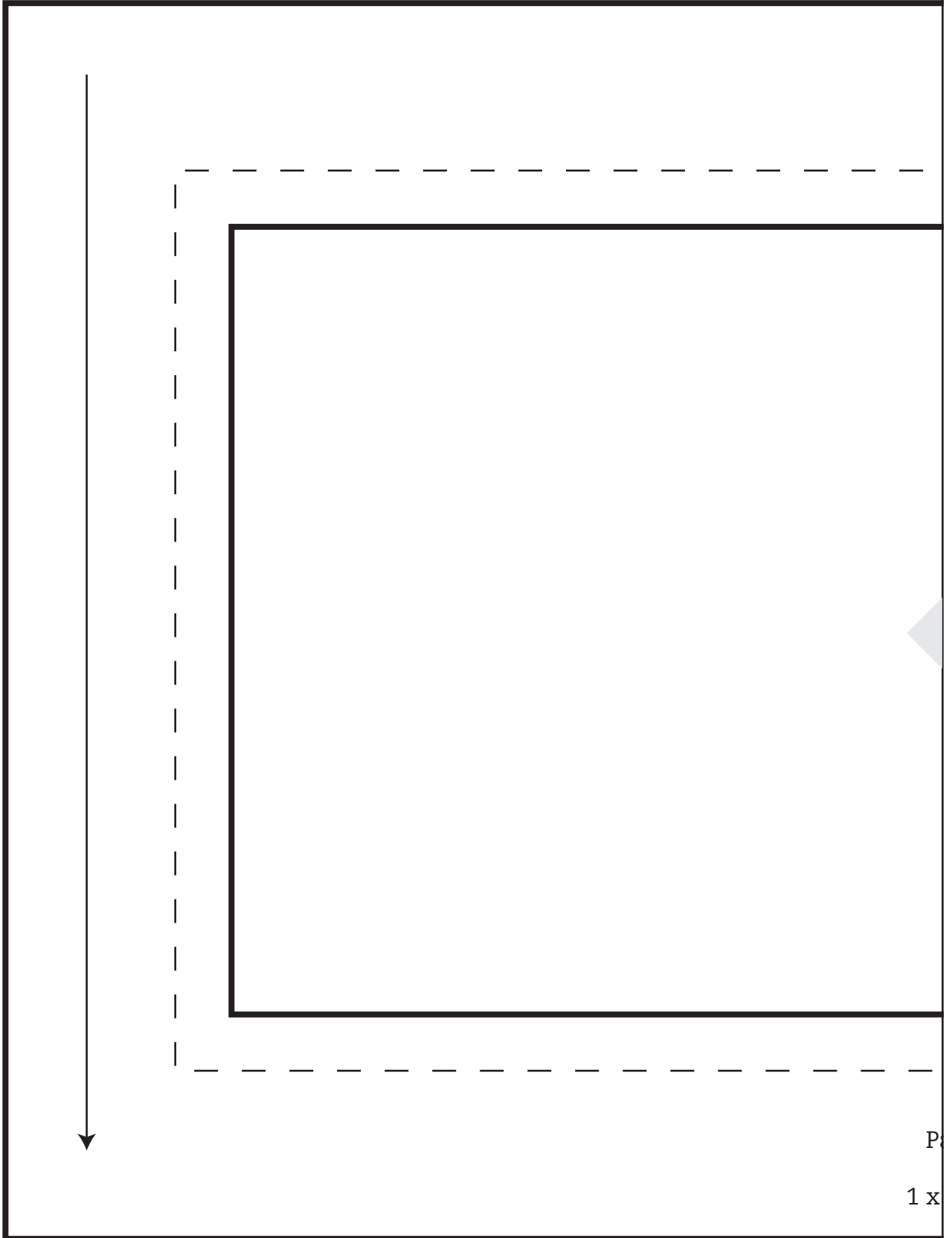
Ma robe tablier

ceinture
à couper

4 x dans le tissu principal

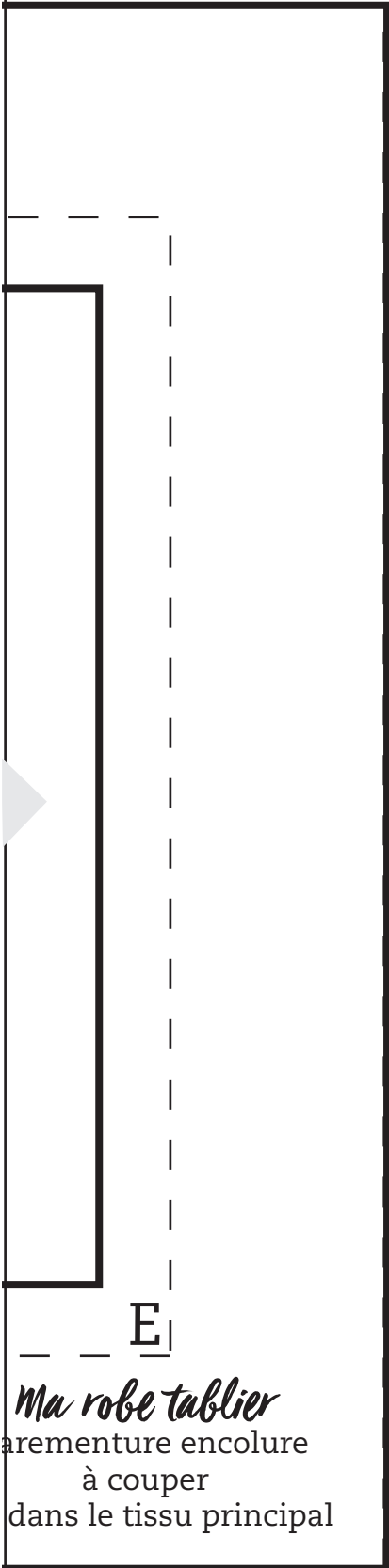


A3

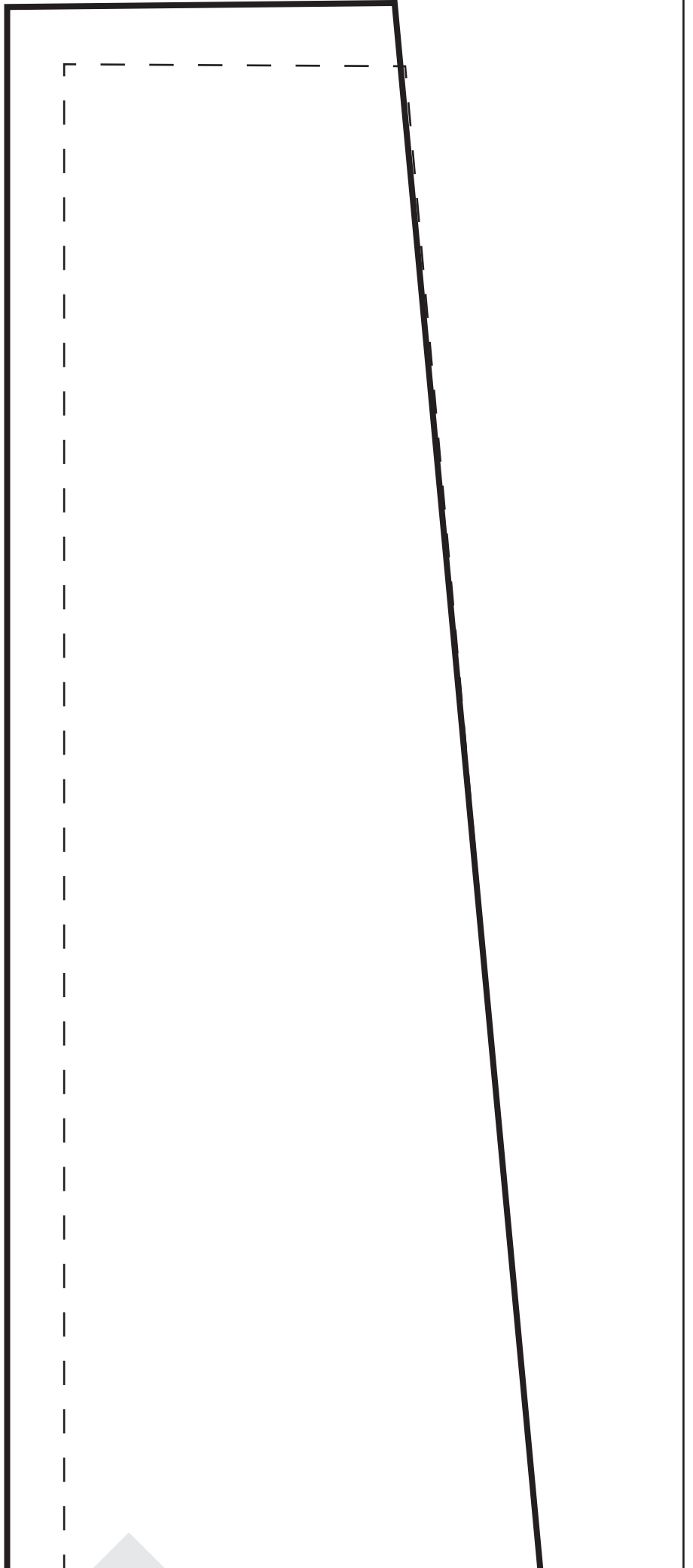


P
1 x

A4



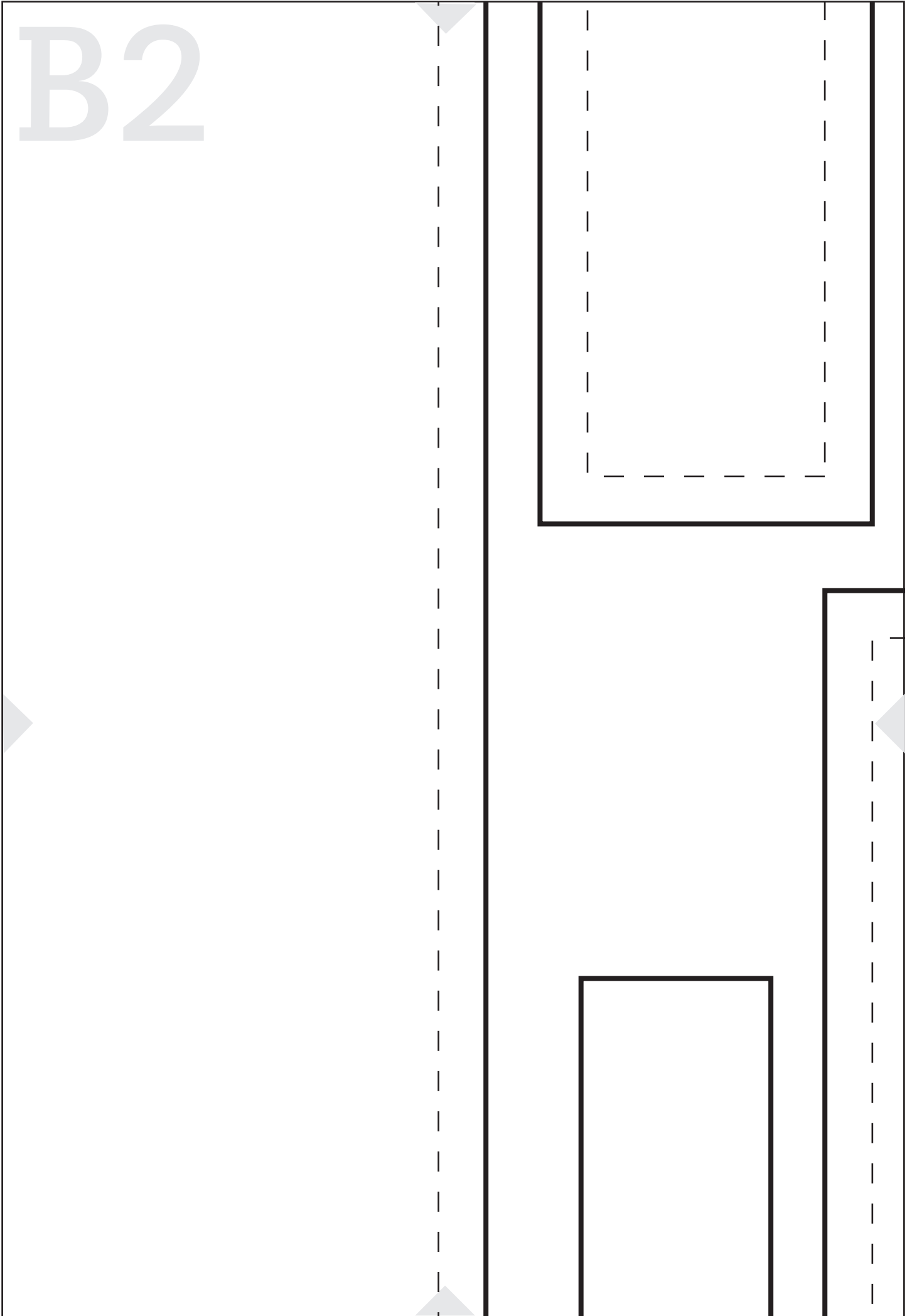
Ma robe tablier
armementure encolure
à couper
dans le tissu principal



B1

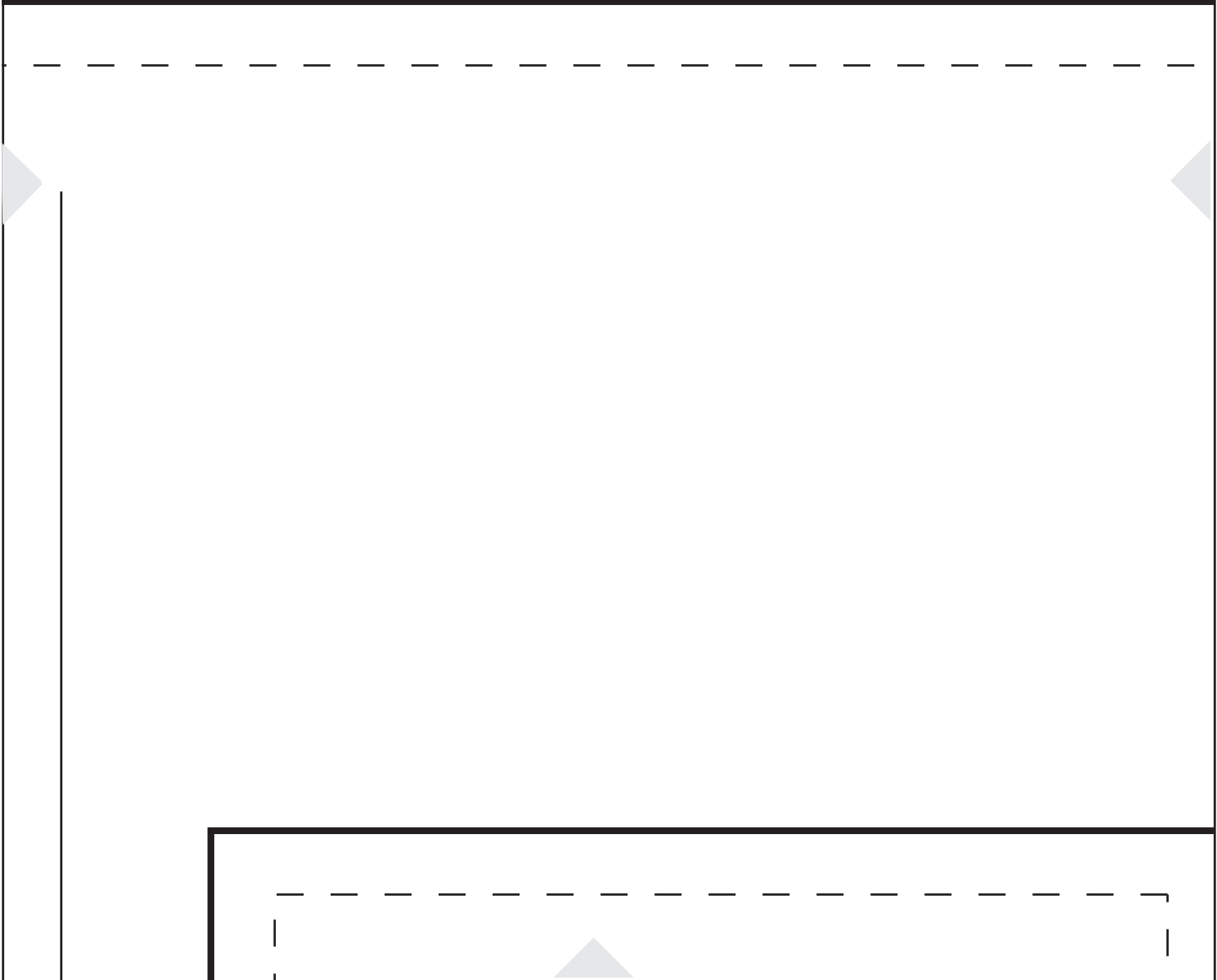
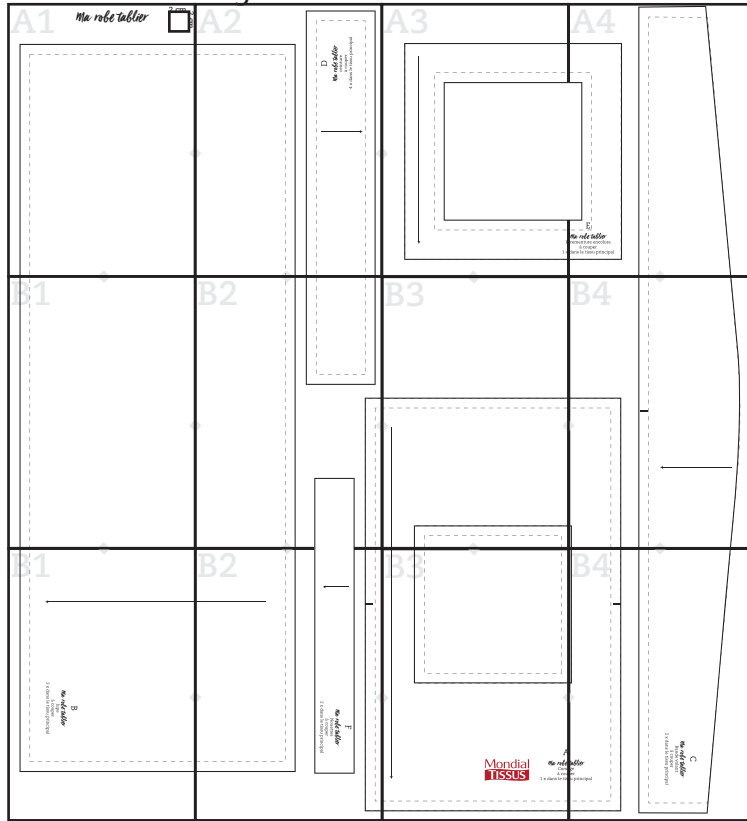


B2

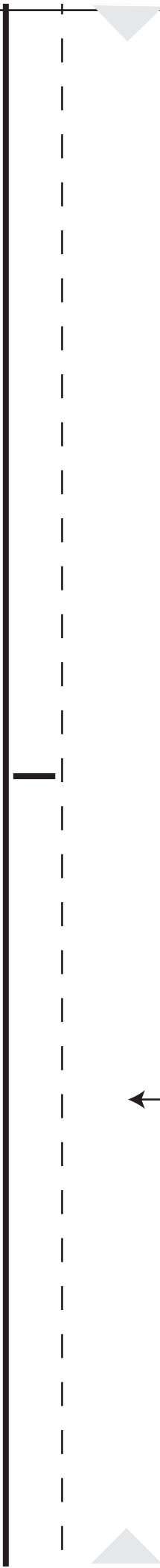
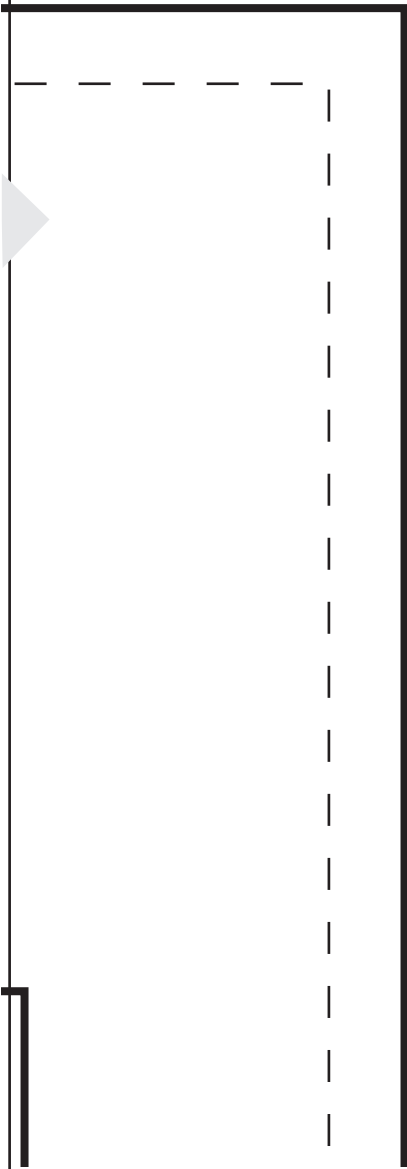


B3

Grille d'assemblage



B4



B1



B

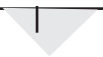
Ma robe tablier

Jupe

à couper

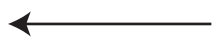
2 x dans le tissu principal

B2

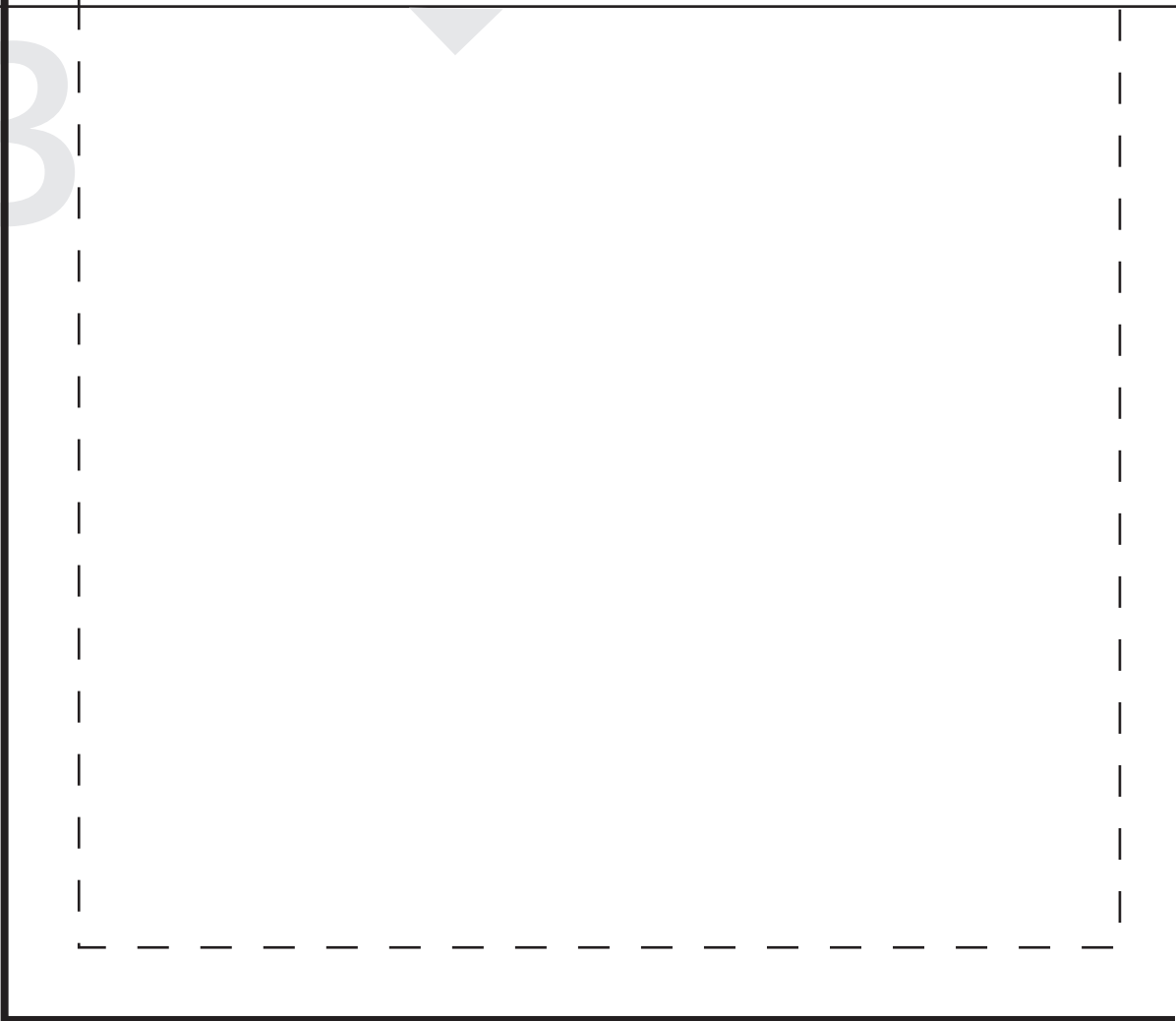


F

Ma robe tablier
Nouettes
à couper
2 x dans le tissu principal



B3



Mondial
TISSUS

A
Ma robe
Corsa
à coup
1 x dans le tiss



B4

tablier
ge
per
su principal

C
ma robe tablier
Bande volant
à couper
2 x dans le tissu principal