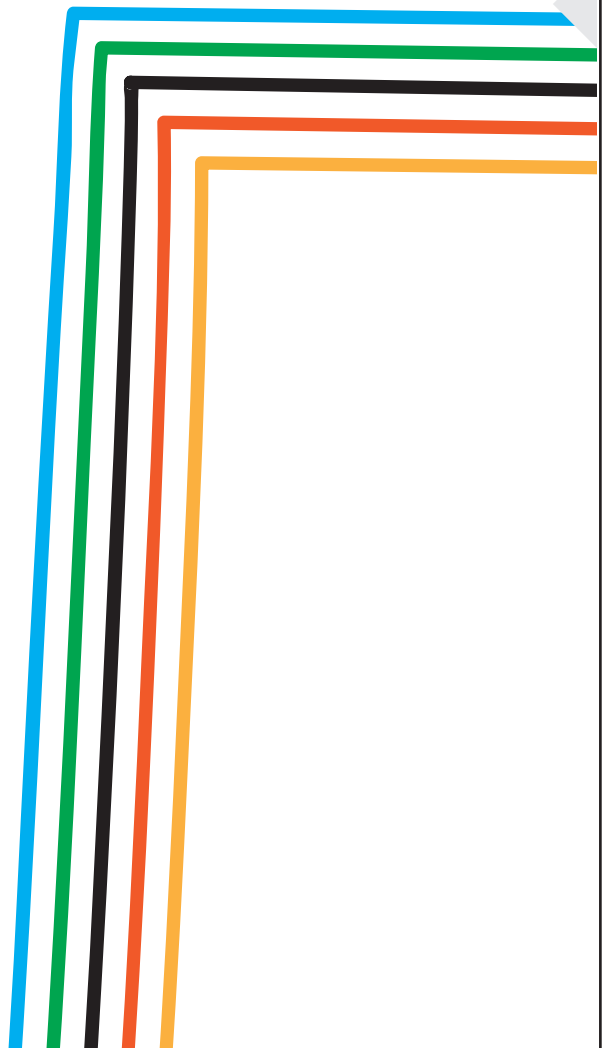
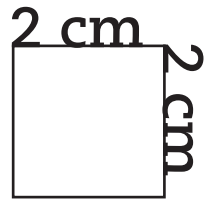
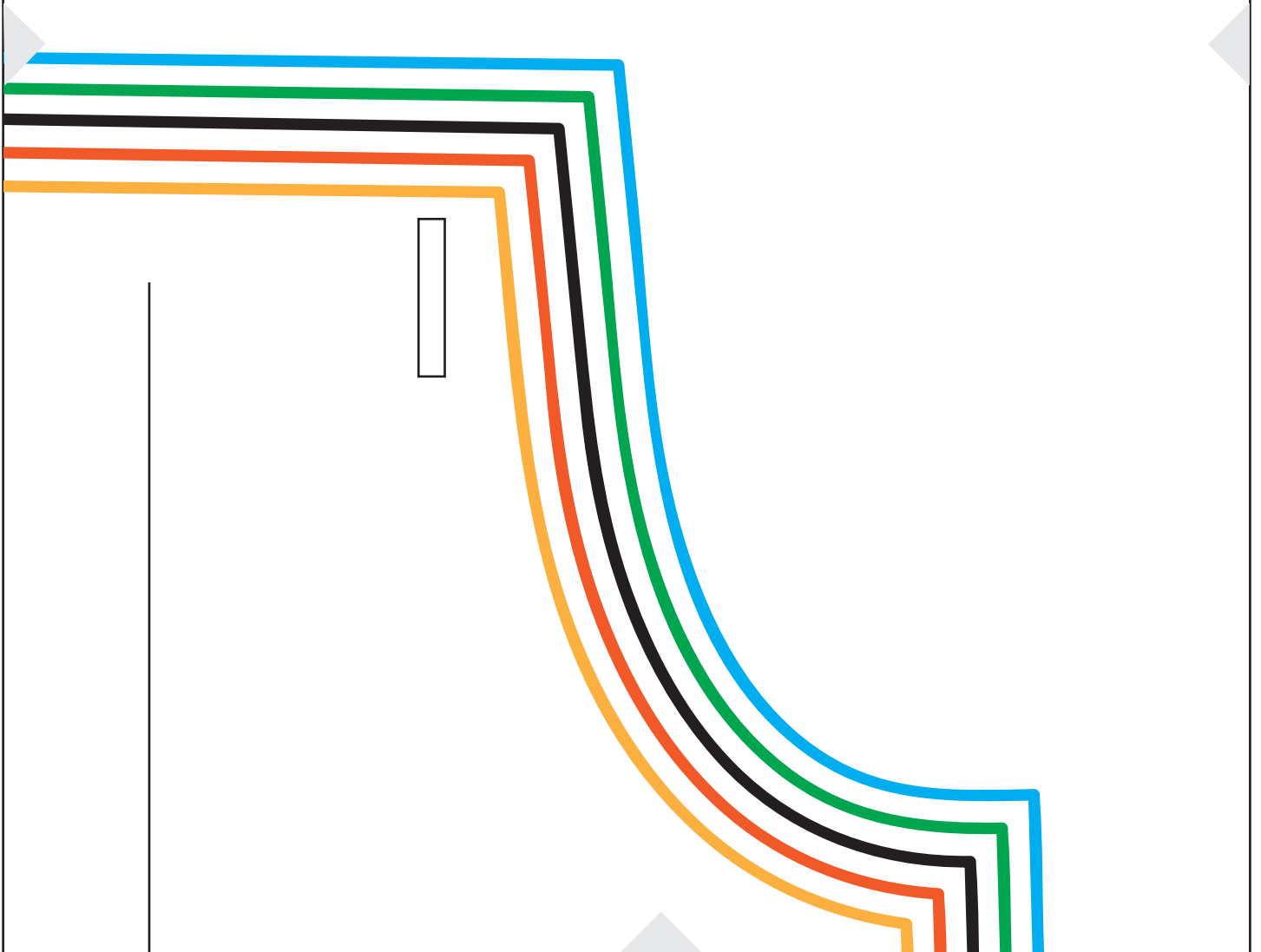


A1

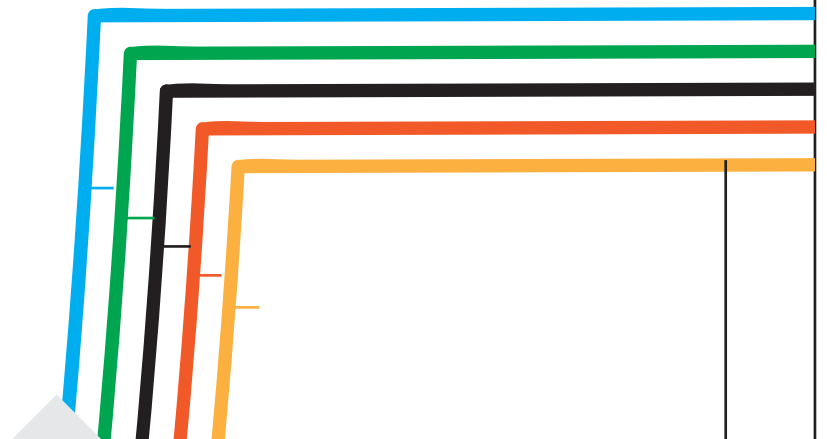
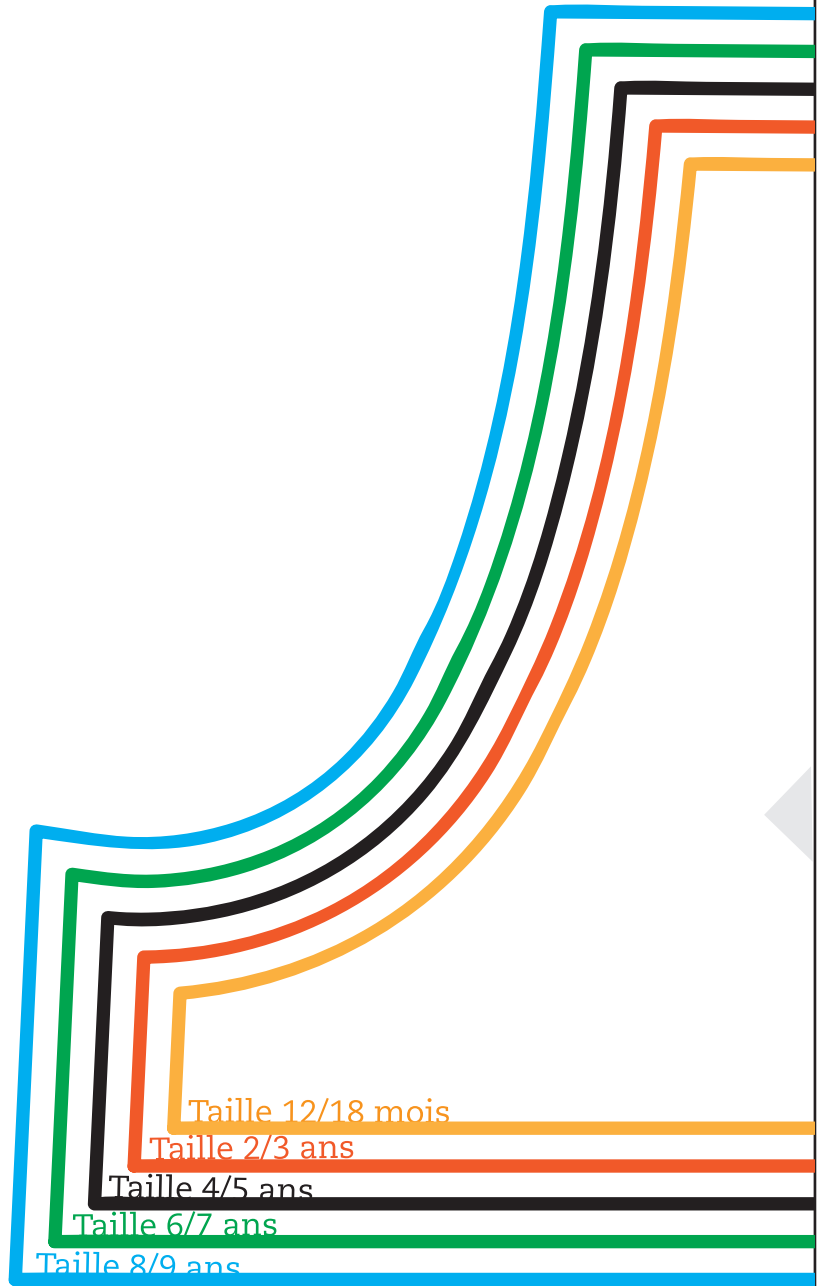
La Salopette mixte



A2



A3



A4

C

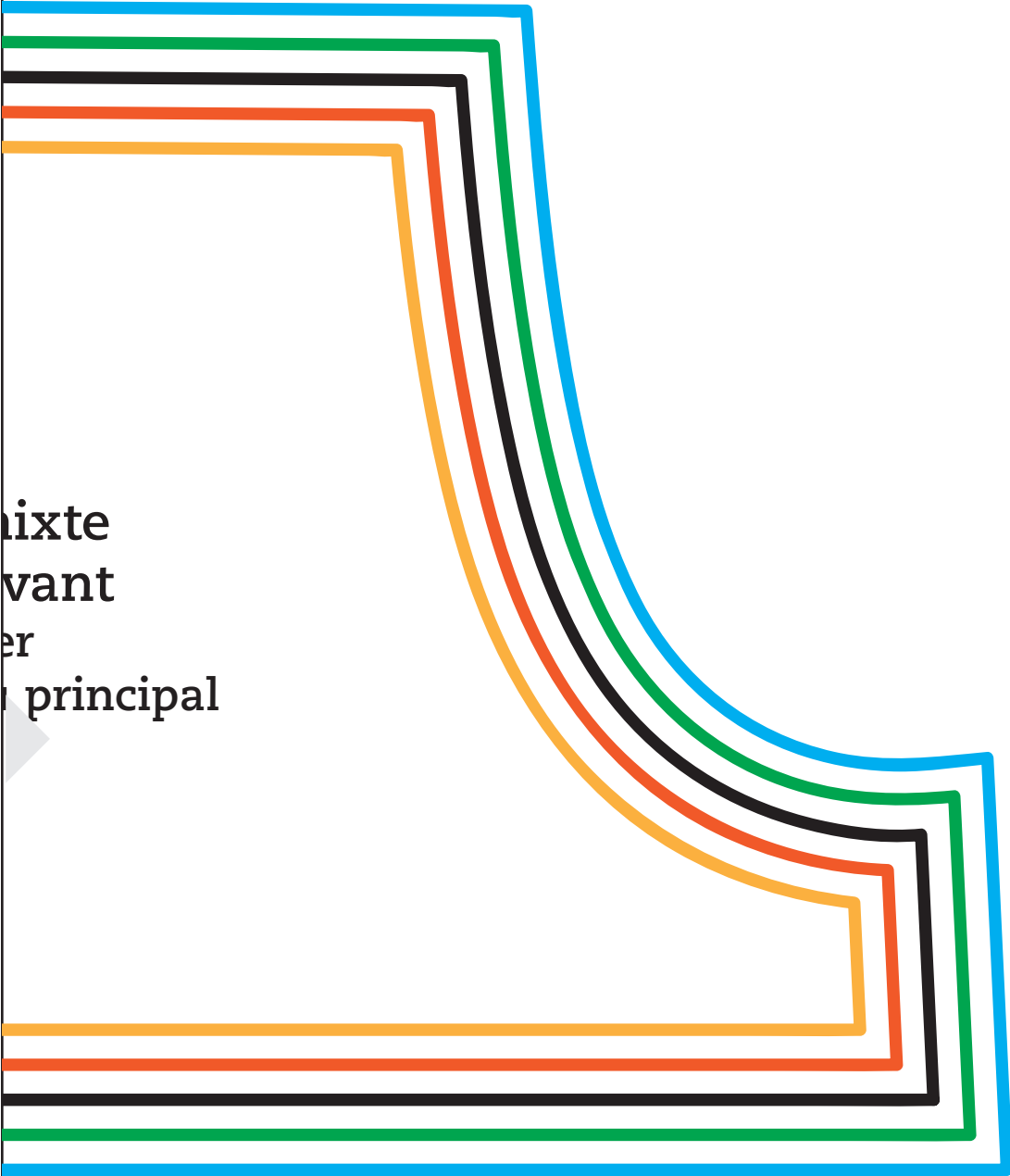
Salopette m
Enforme de
À coupe
1 x dans le tissu

✕ Taille : 12/18 mois , 2/3 ans, 4/5 ans,

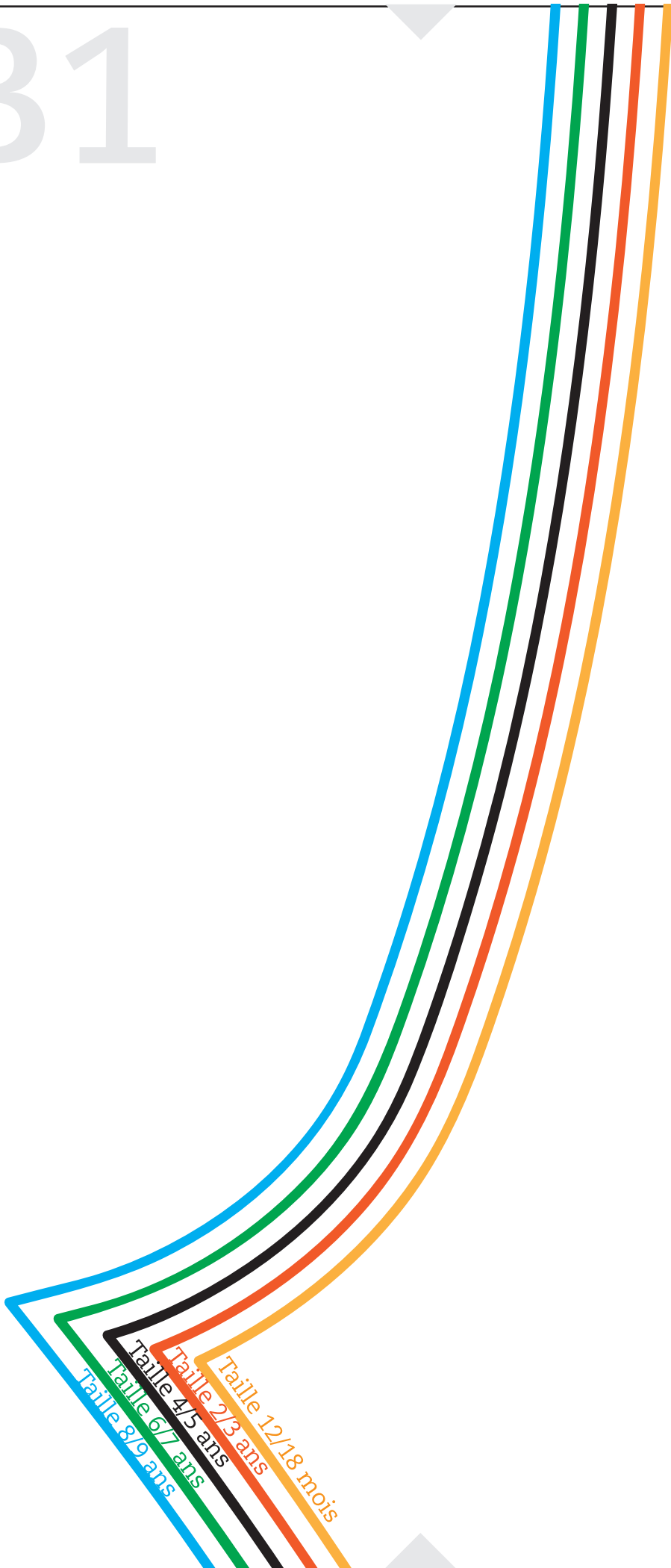
✕ Taille : 6/7 ans, 8/9 ans

A5

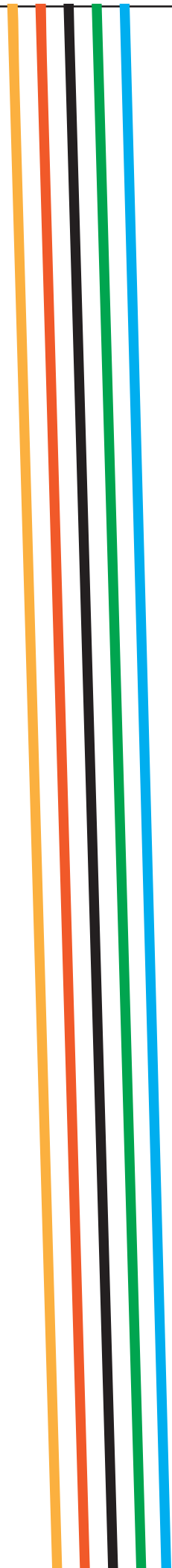
mixte
vant
er
principal



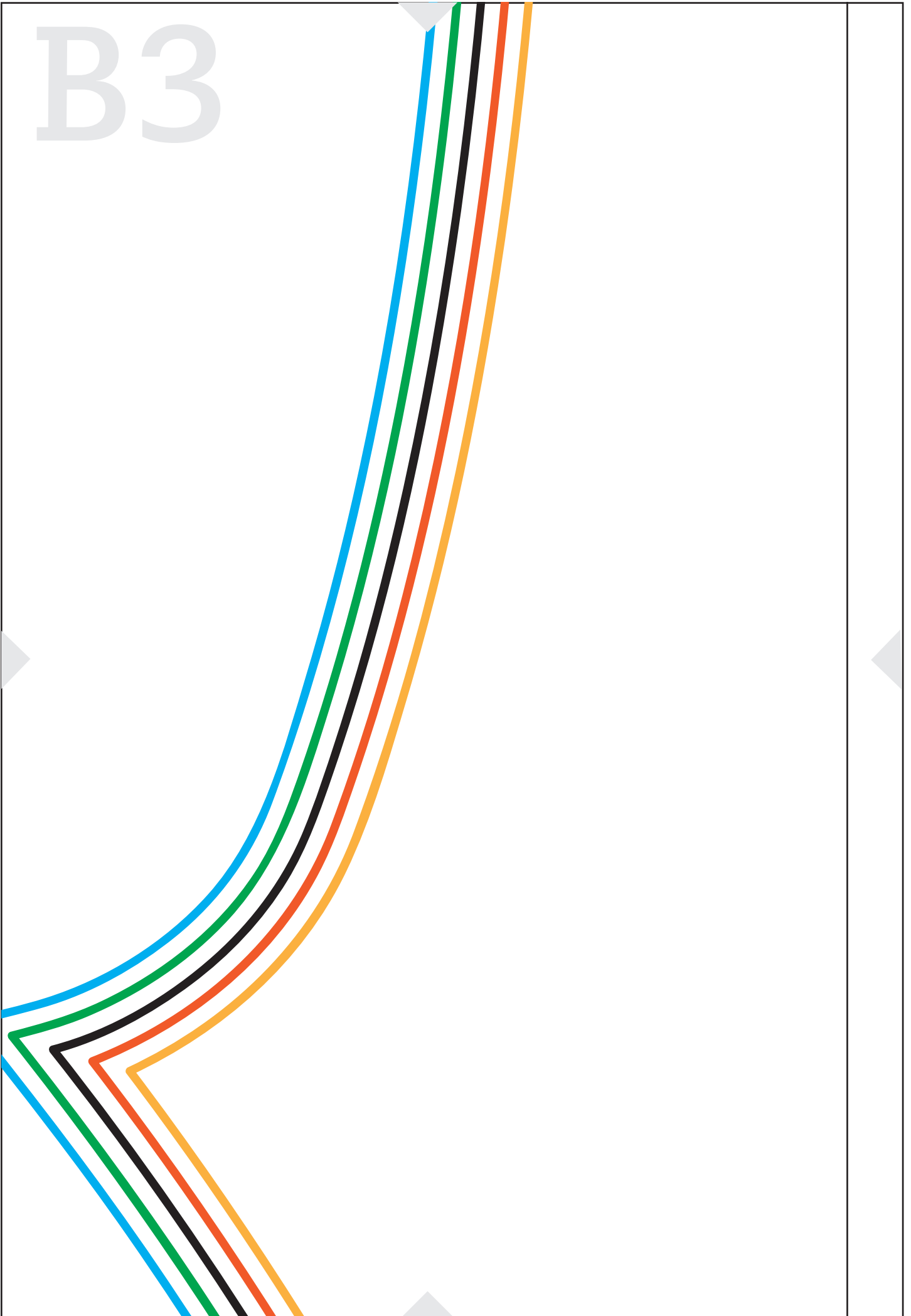
B1



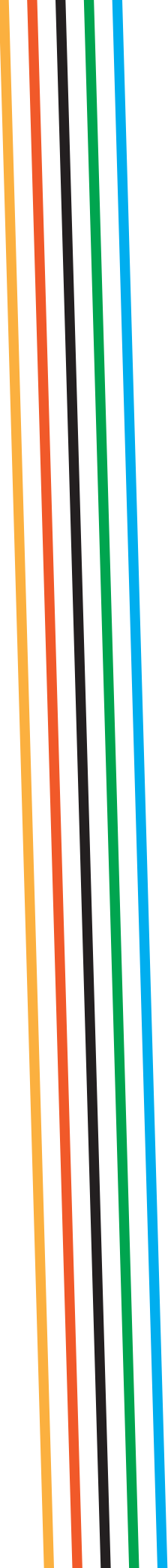
B2



B3

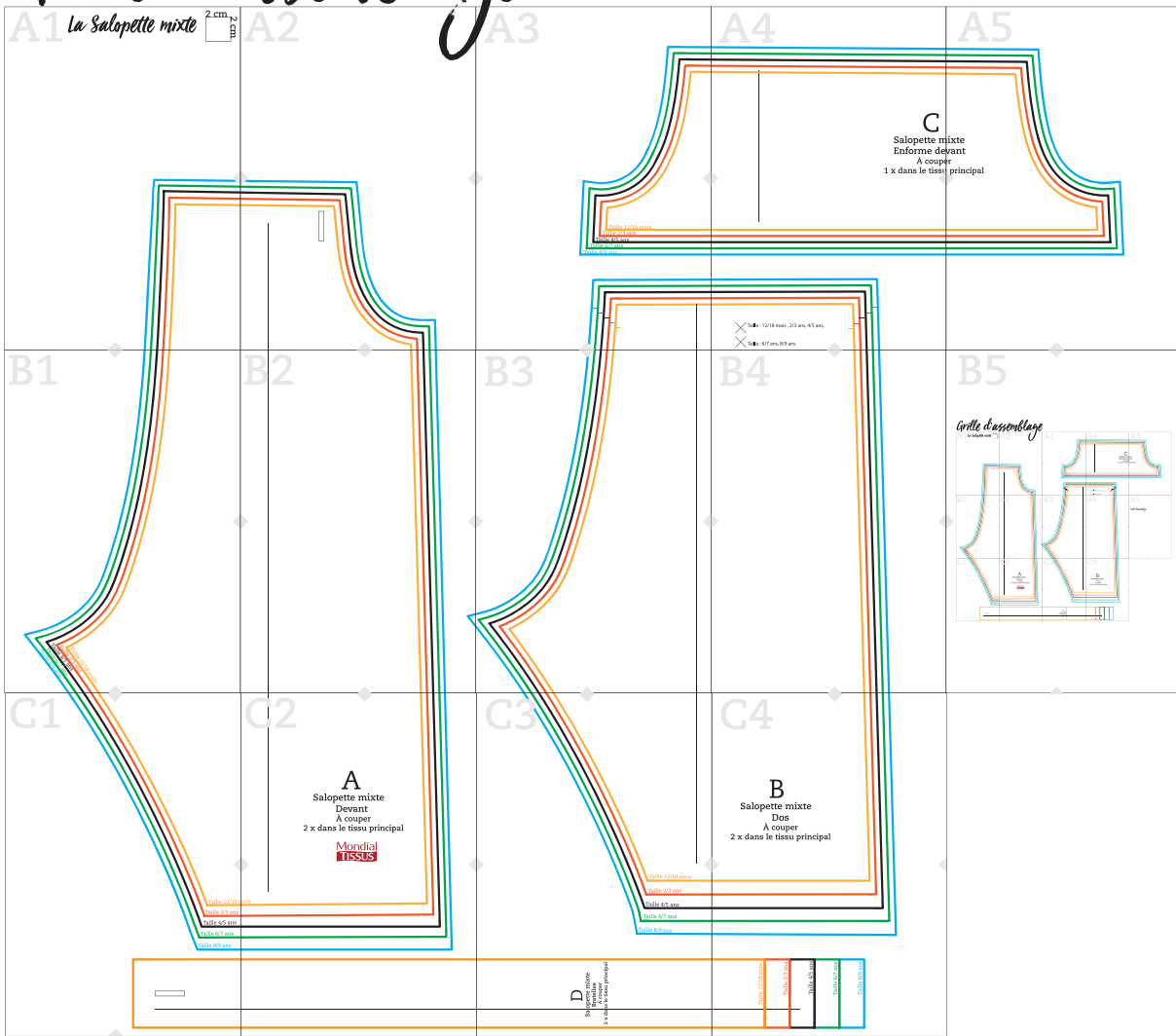


B4

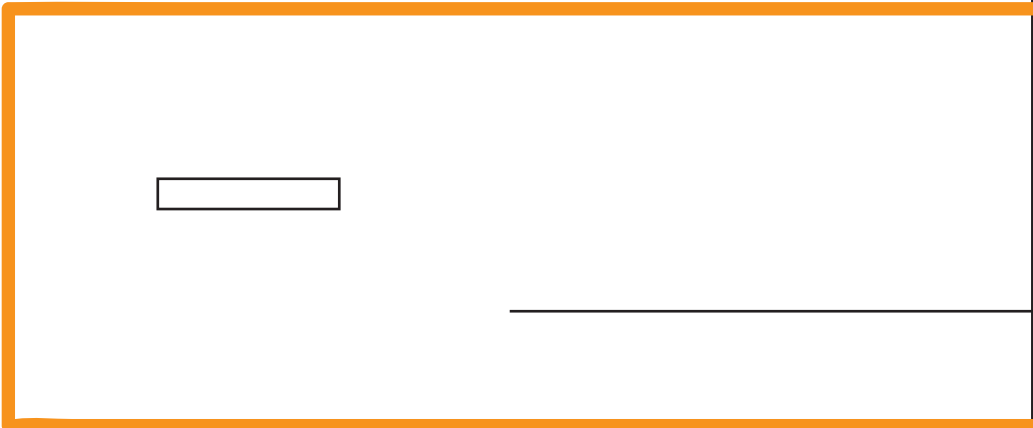
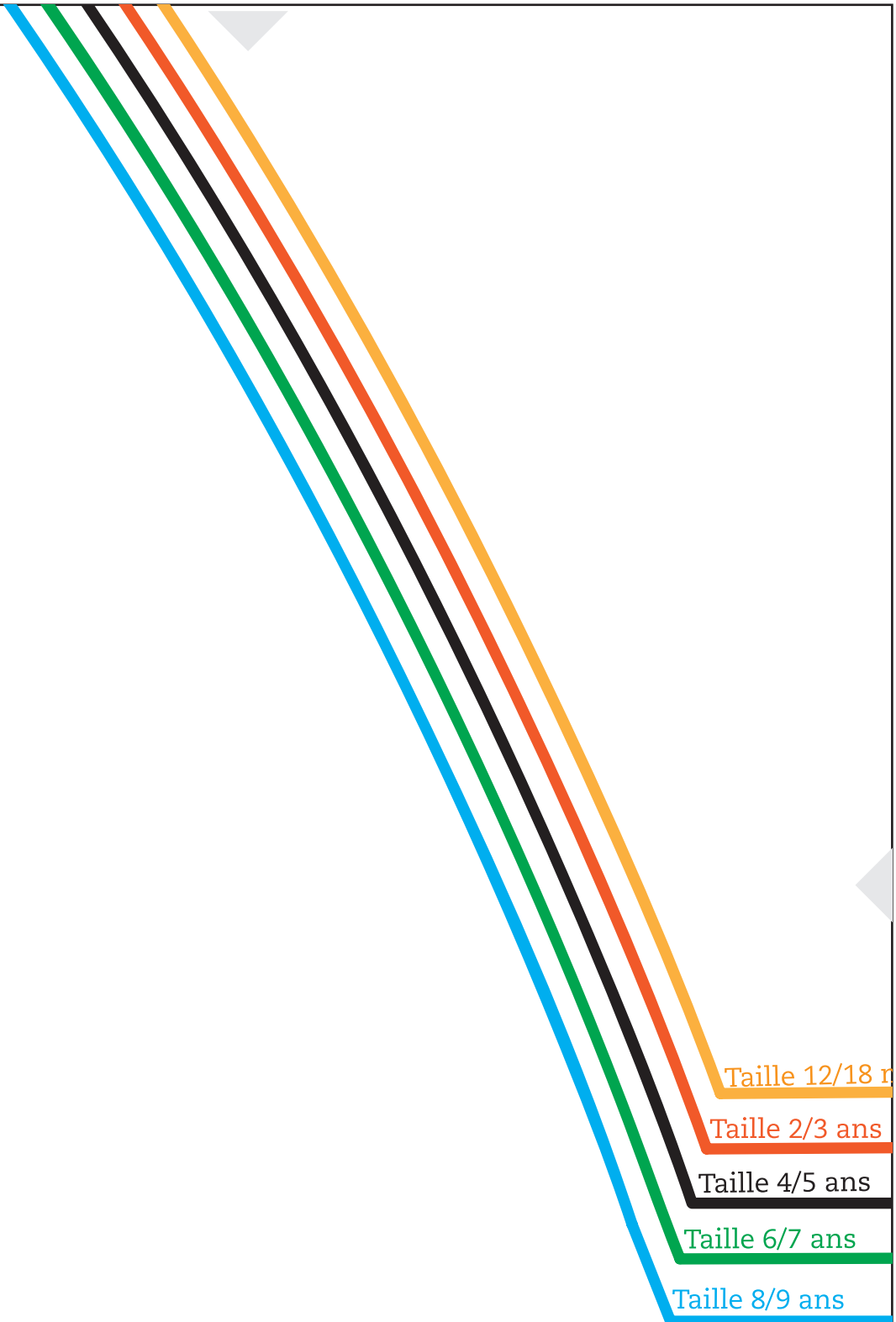


B5

Grille d'assemblage



C1



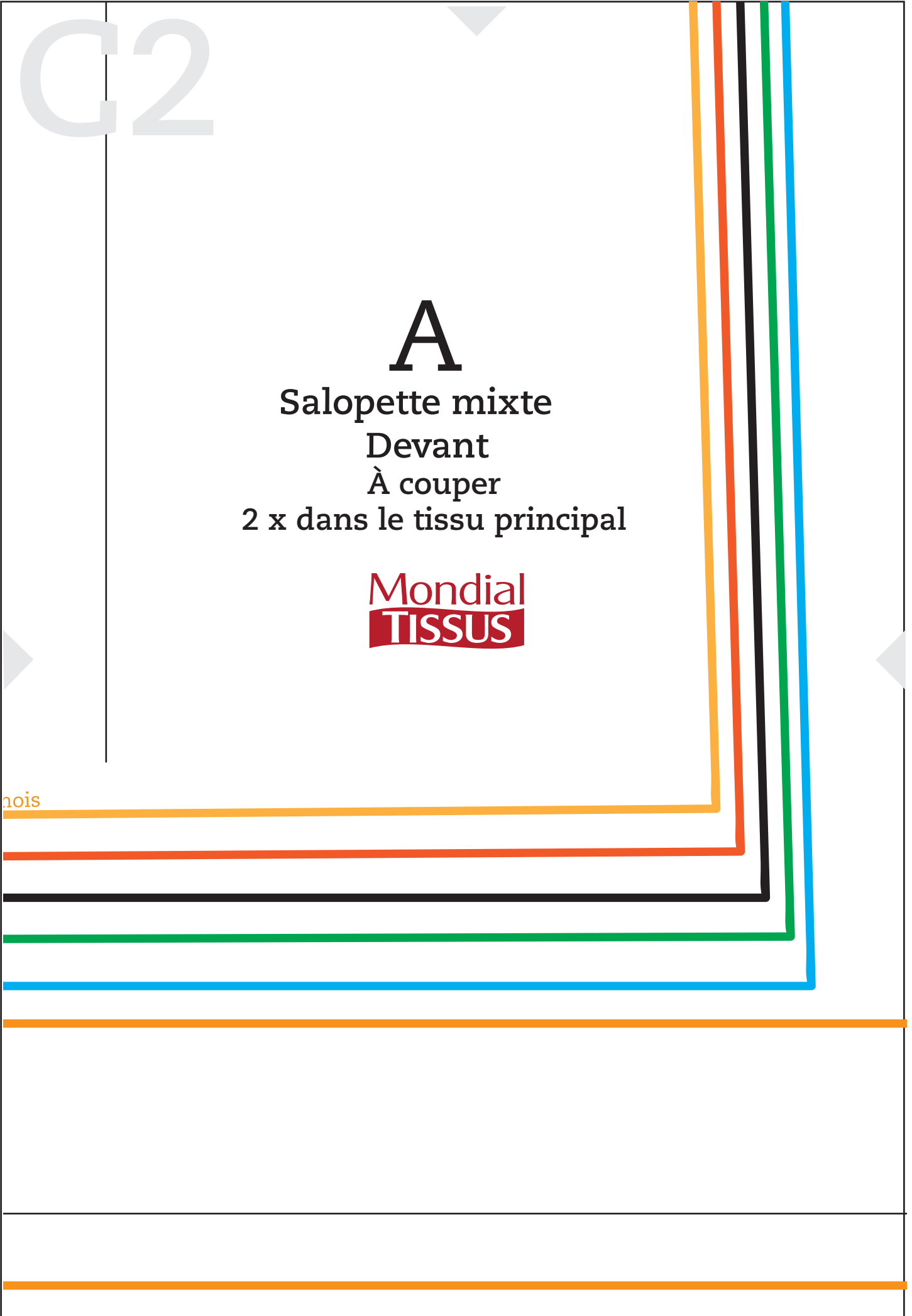
C2

A

Salopette mixte
Devant
À couper
2 x dans le tissu principal

Mondial
TISSUS

nois



C3

Taille 12/18 mois
Taille 2/3 ans
Taille 4/5 ans
Taille 6/7 ans
Taille 8/9 ans

D

Salopette mixte
Bretelles
À couper
2 x dans le tissu principal

C4

B

Salopette mixte
Dos
À couper
2 x dans le tissu principal

