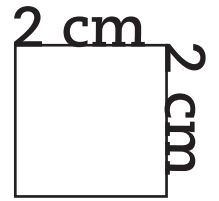


A1

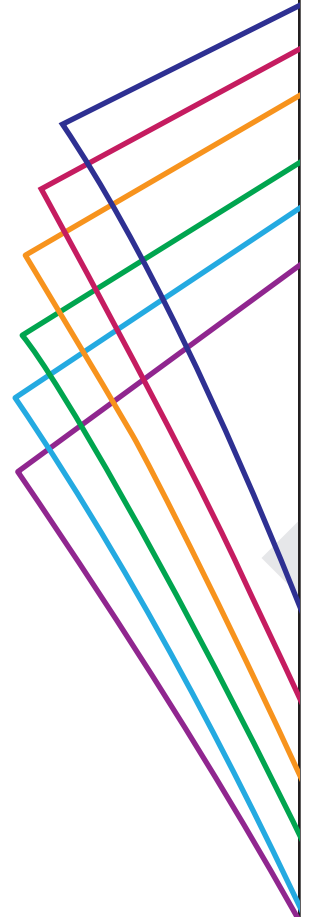
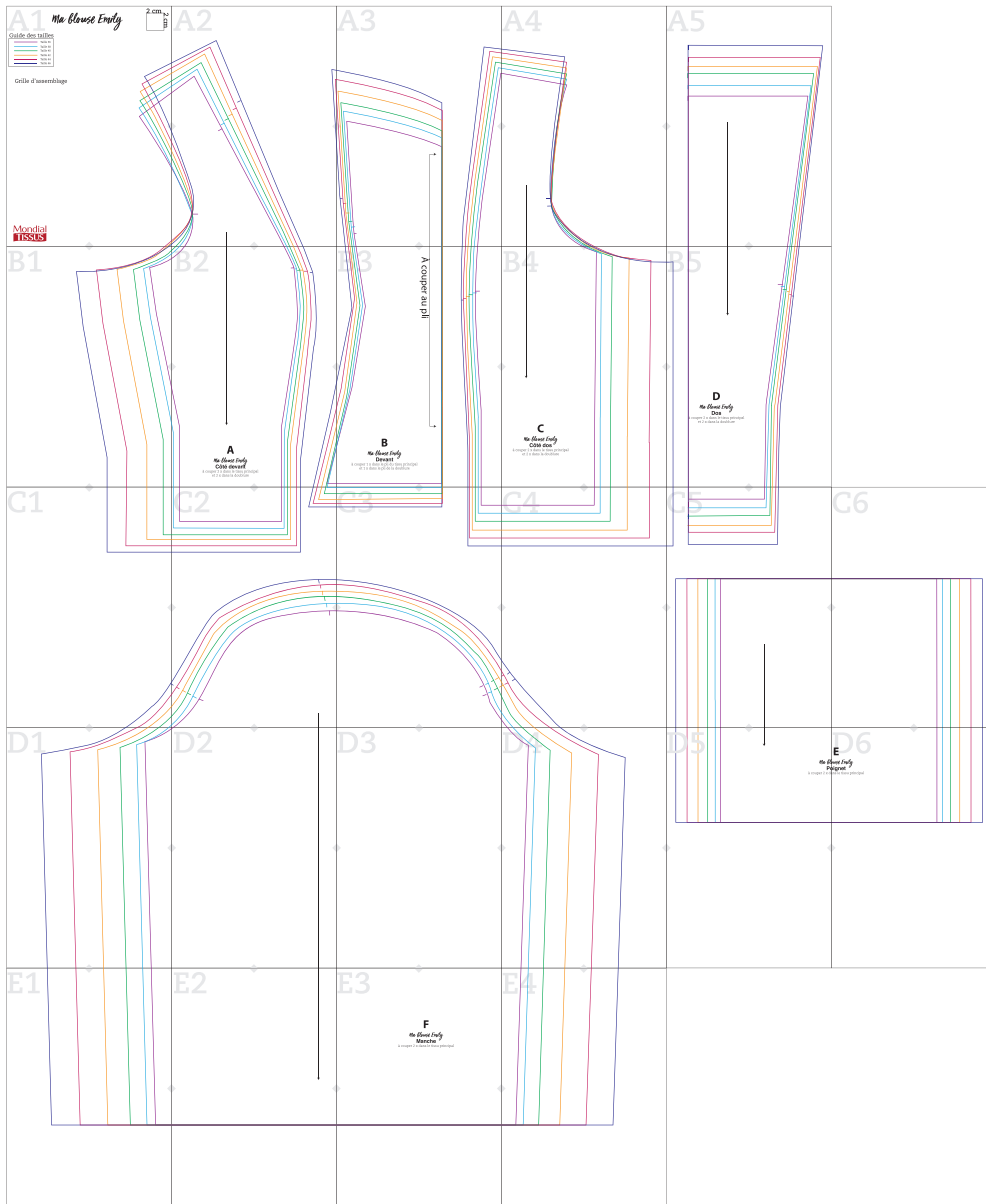
Ma blouse Emily



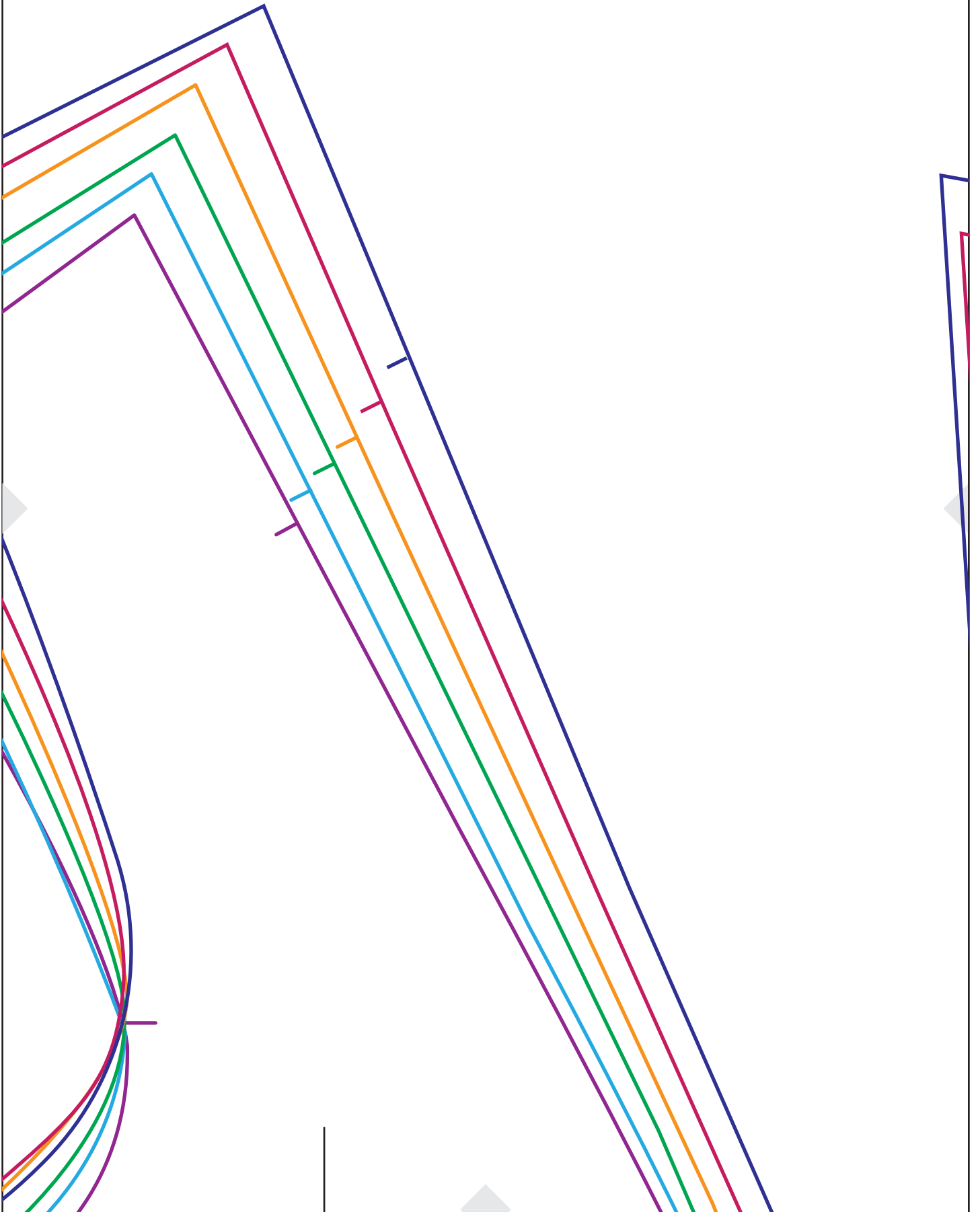
Guide des tailles

	Taille 36
	Taille 38
	Taille 40
	Taille 42
	Taille 44
	Taille 46

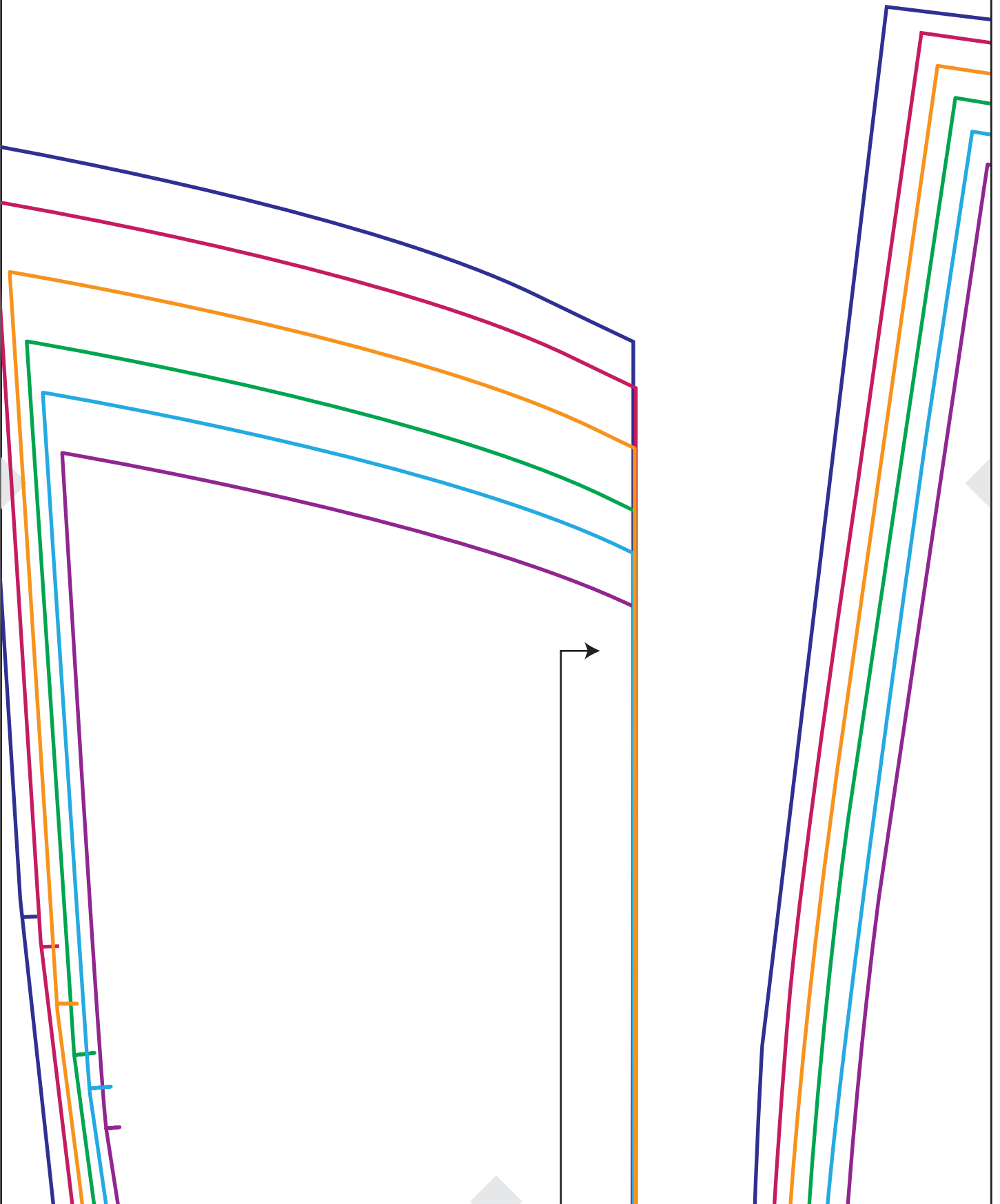
Grille d'assemblage



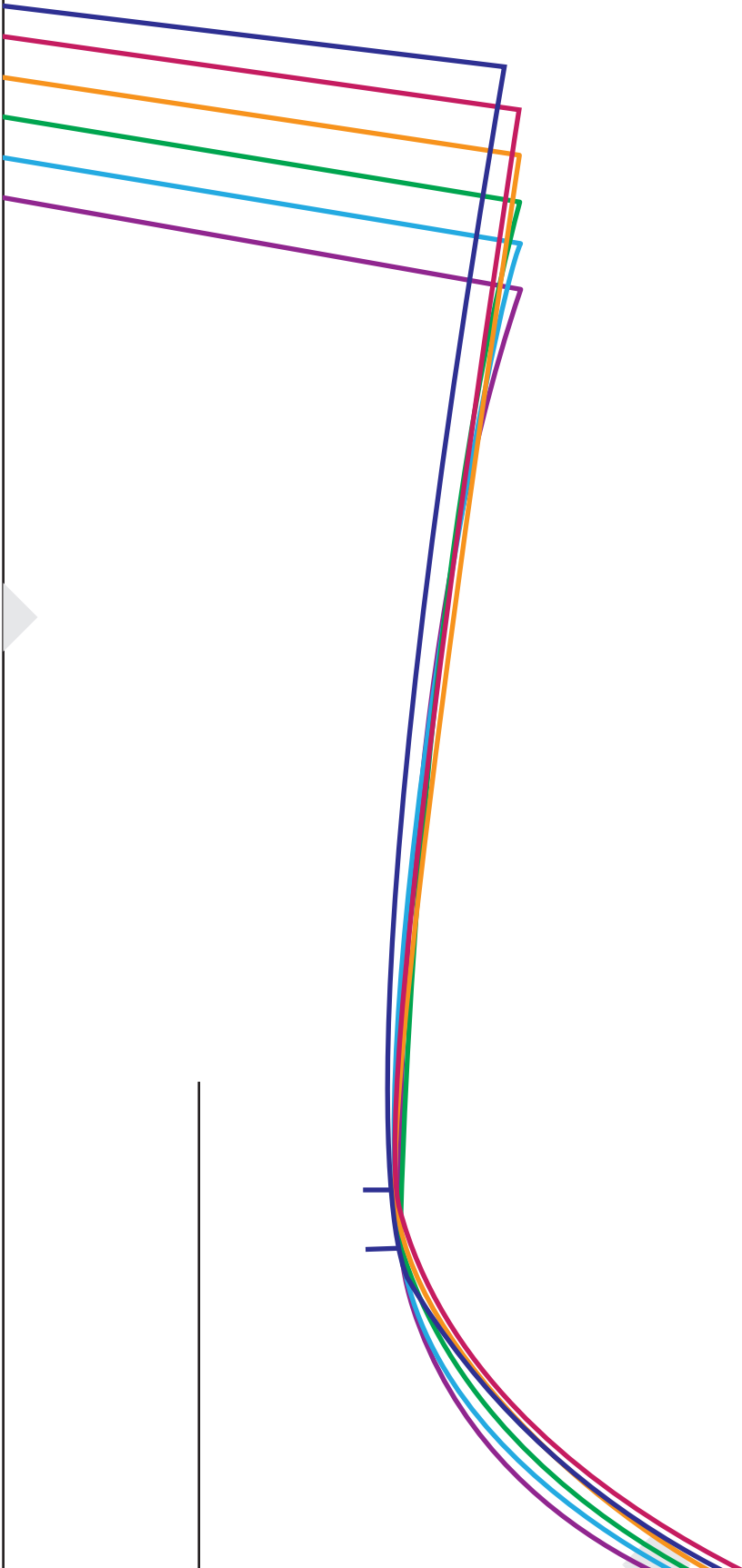
A2



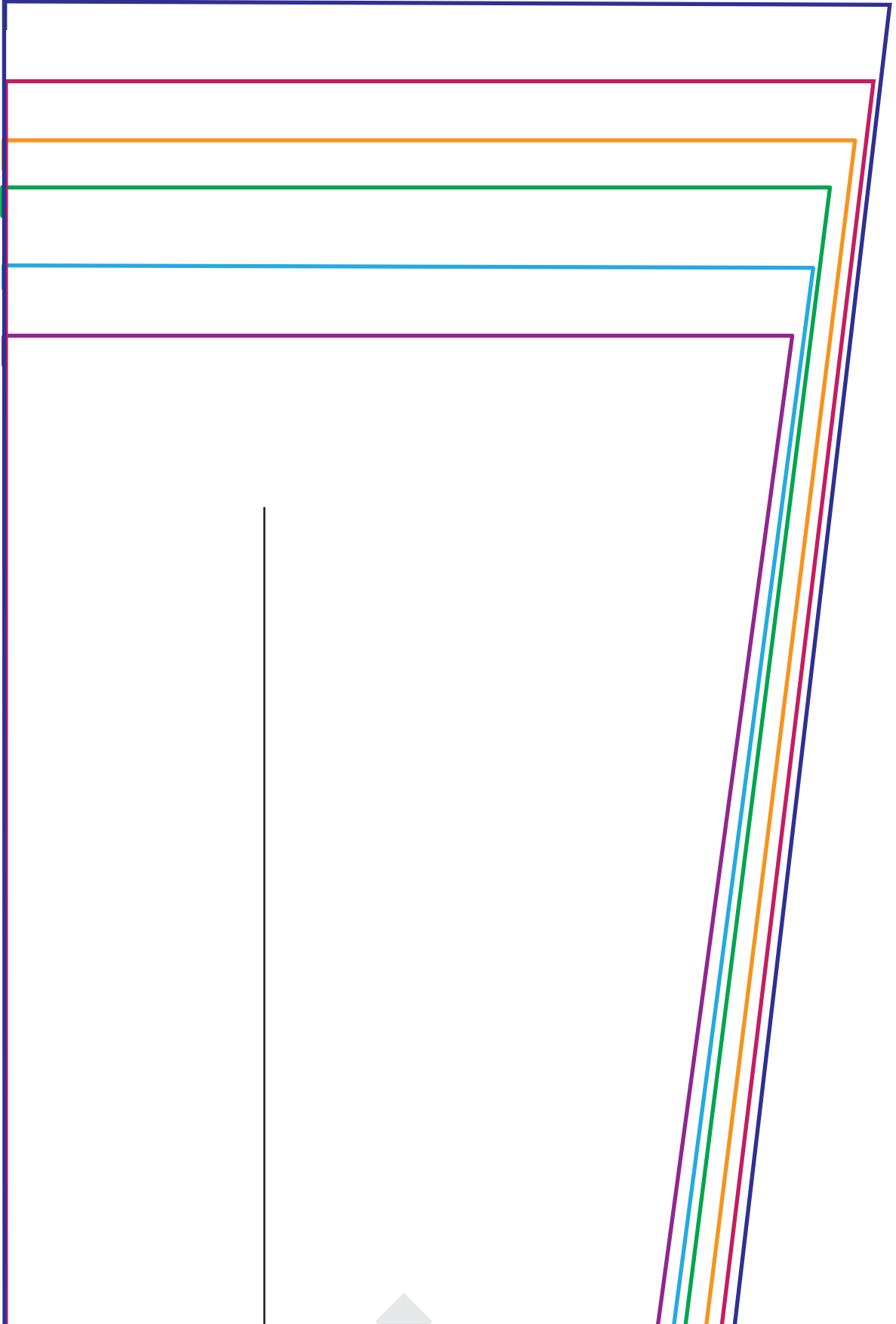
A3



A4



A5



B1



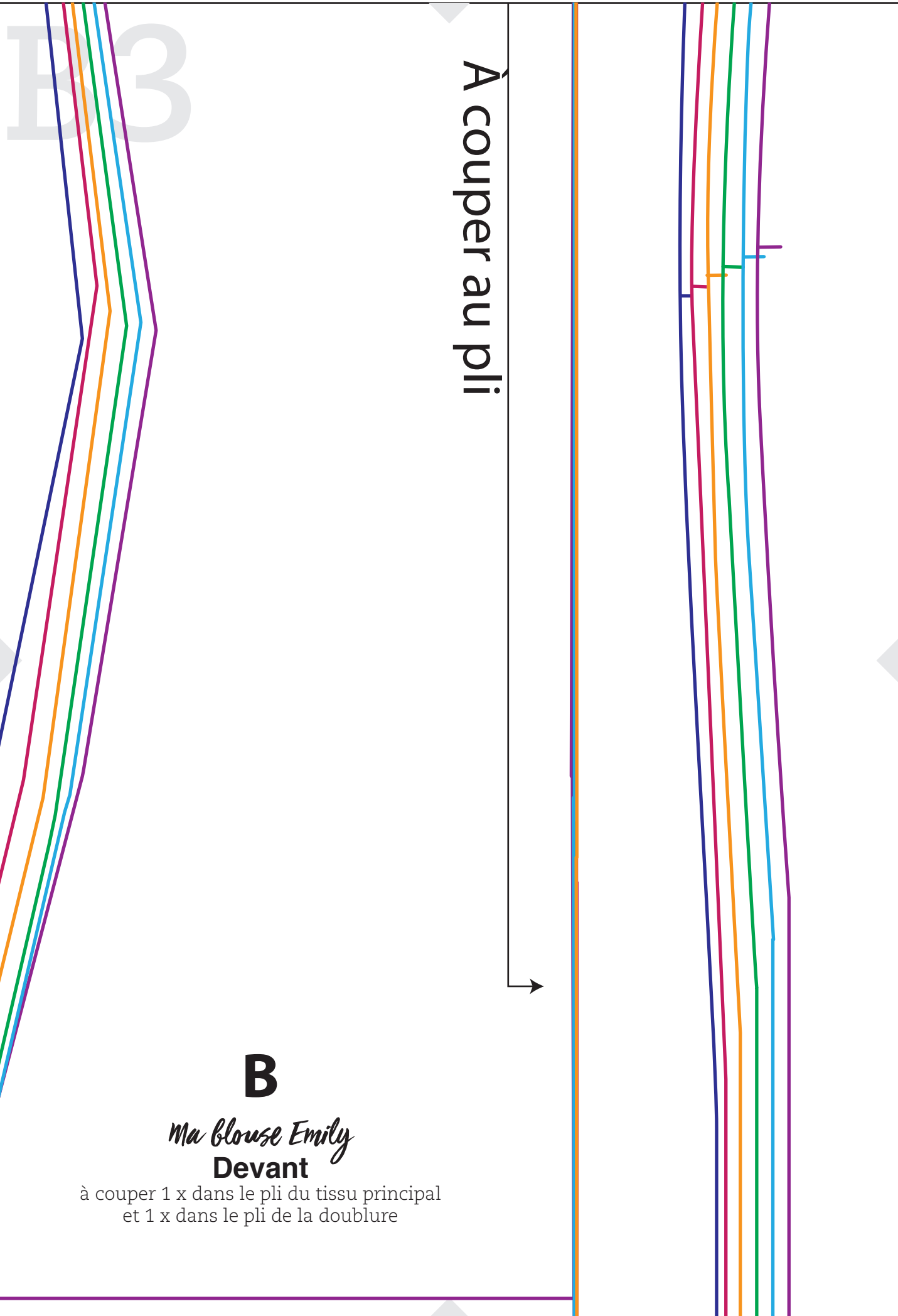


B2

A

Ma blouse Emily
Côté devant

à couper 2 x dans le tissu principal
et 2 x dans la doublure



À couper au pli

B

Ma Blouse Emily
Devant

à couper 1 x dans le pli du tissu principal
et 1 x dans le pli de la doublure

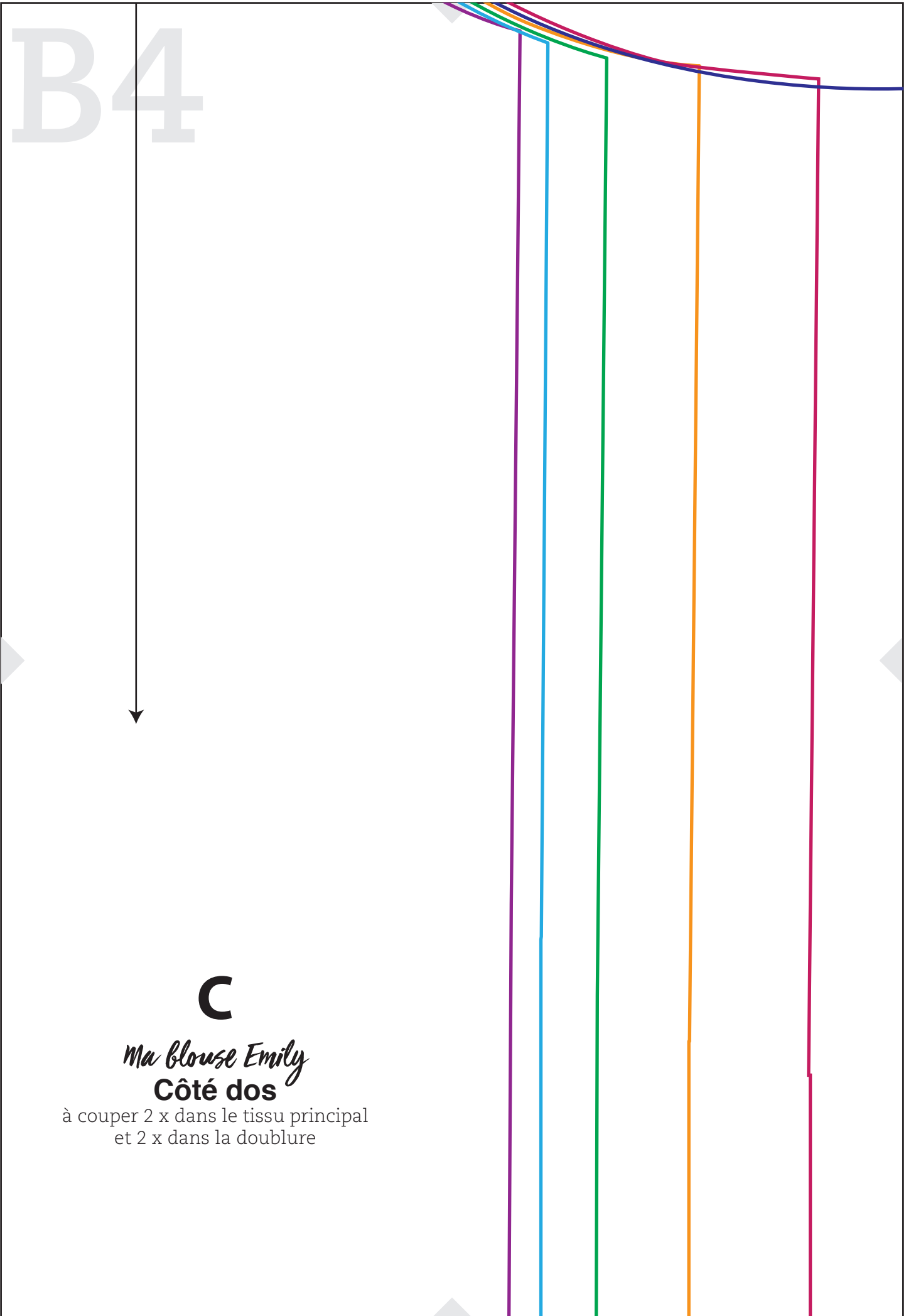
B4

C

Ma Blouse Emily

Côté dos

à couper 2 x dans le tissu principal
et 2 x dans la doublure



B5

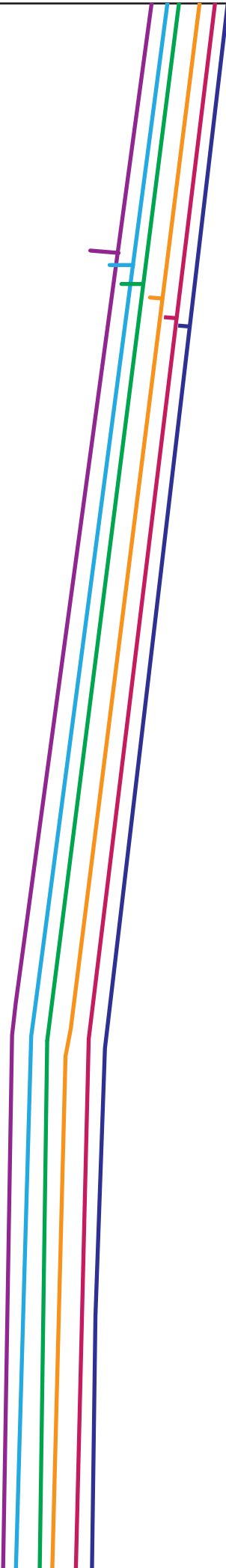


D

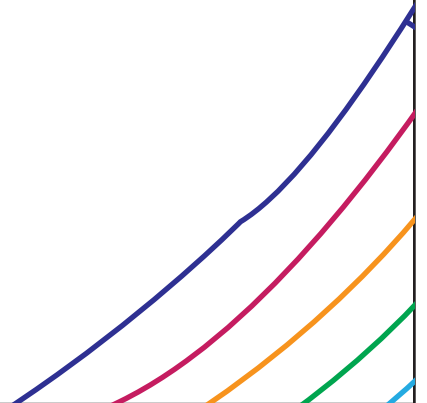
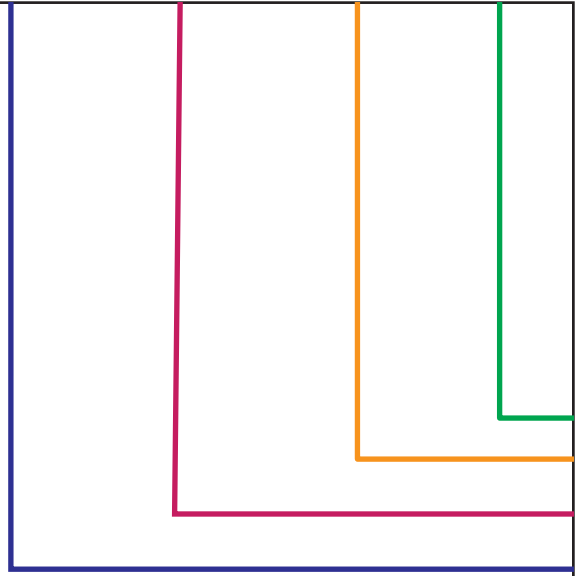
Ma blouse Emily

Dos

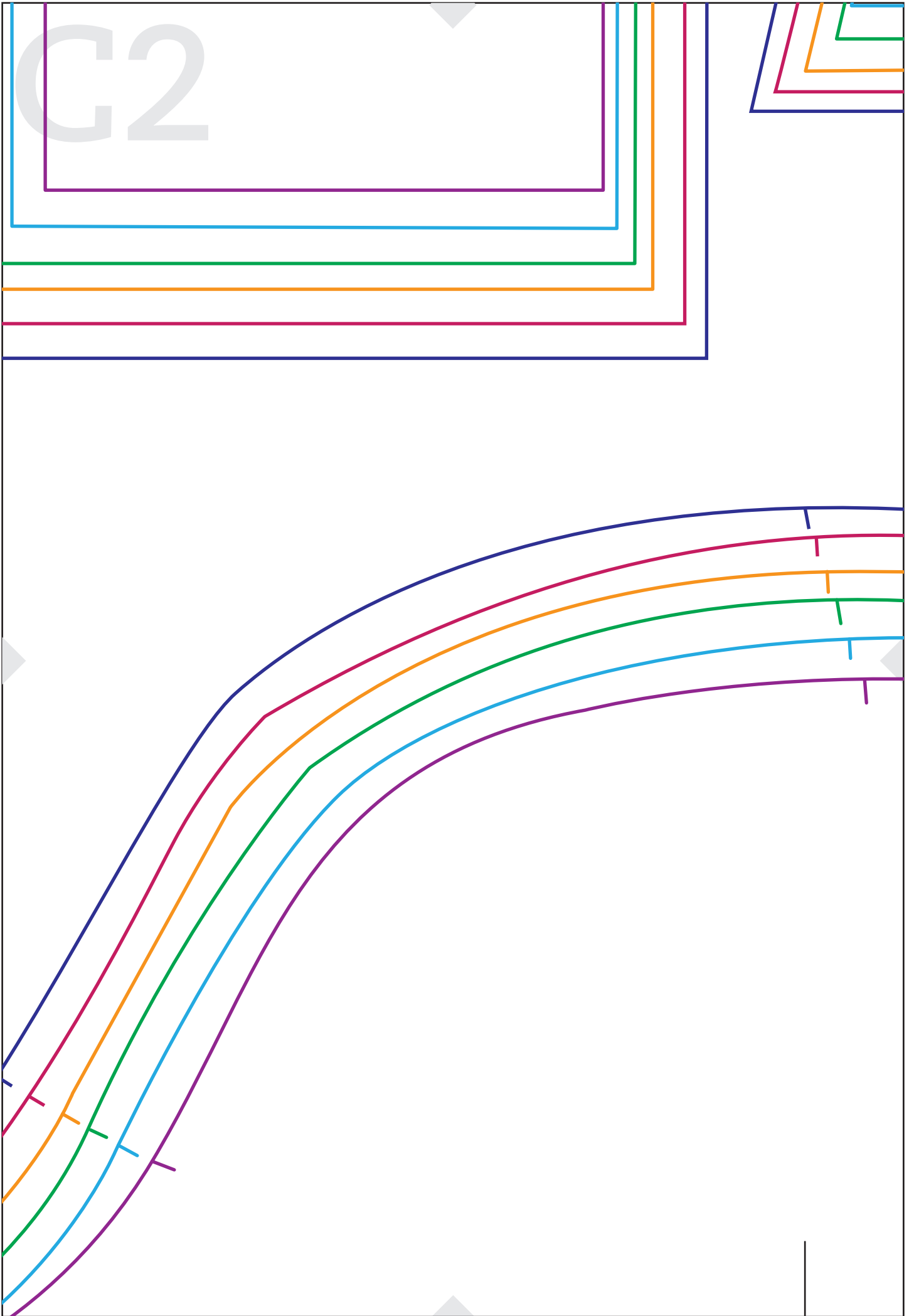
à couper 2 x dans le tissu principal
et 2 x dans la doublure

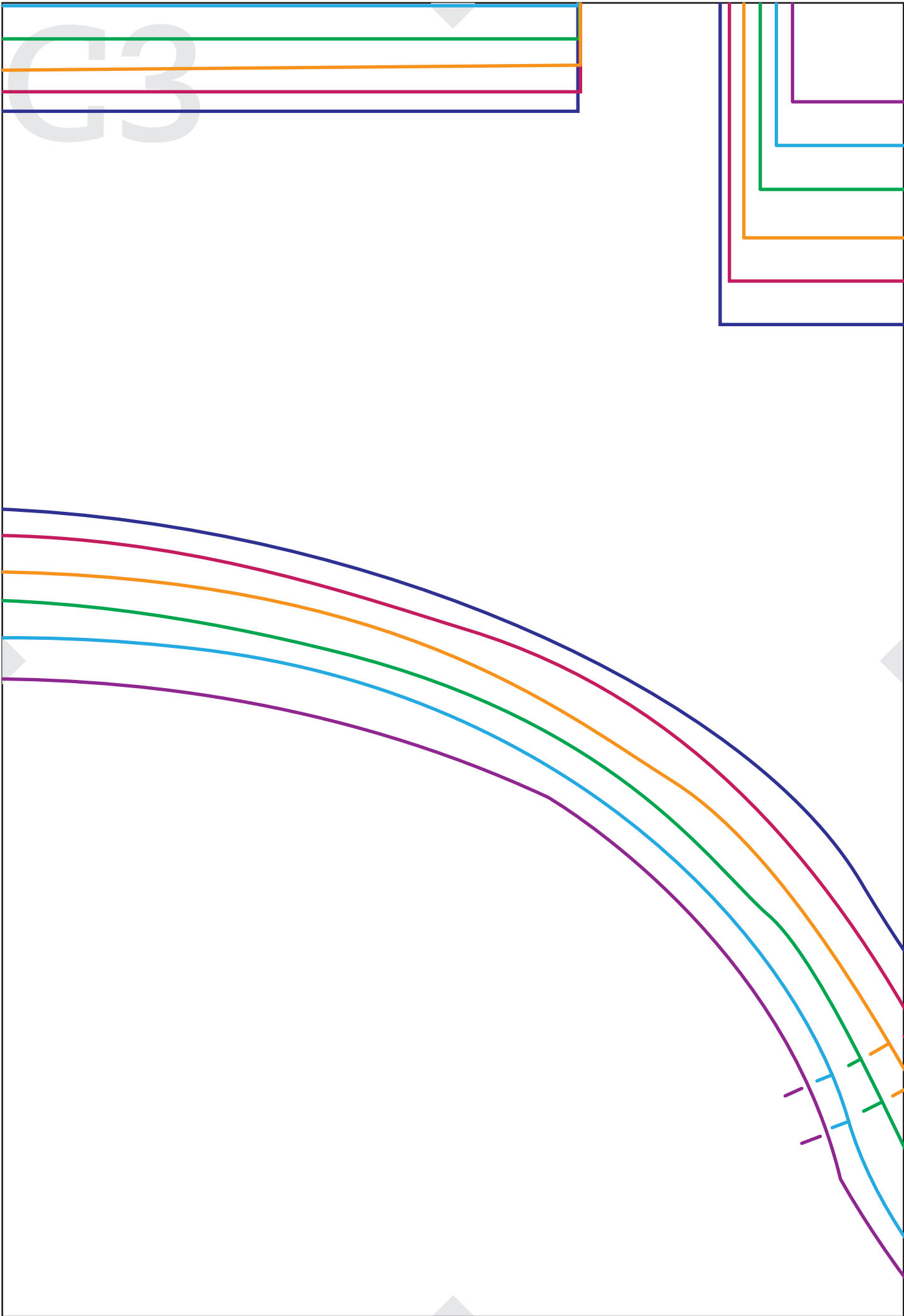


C1

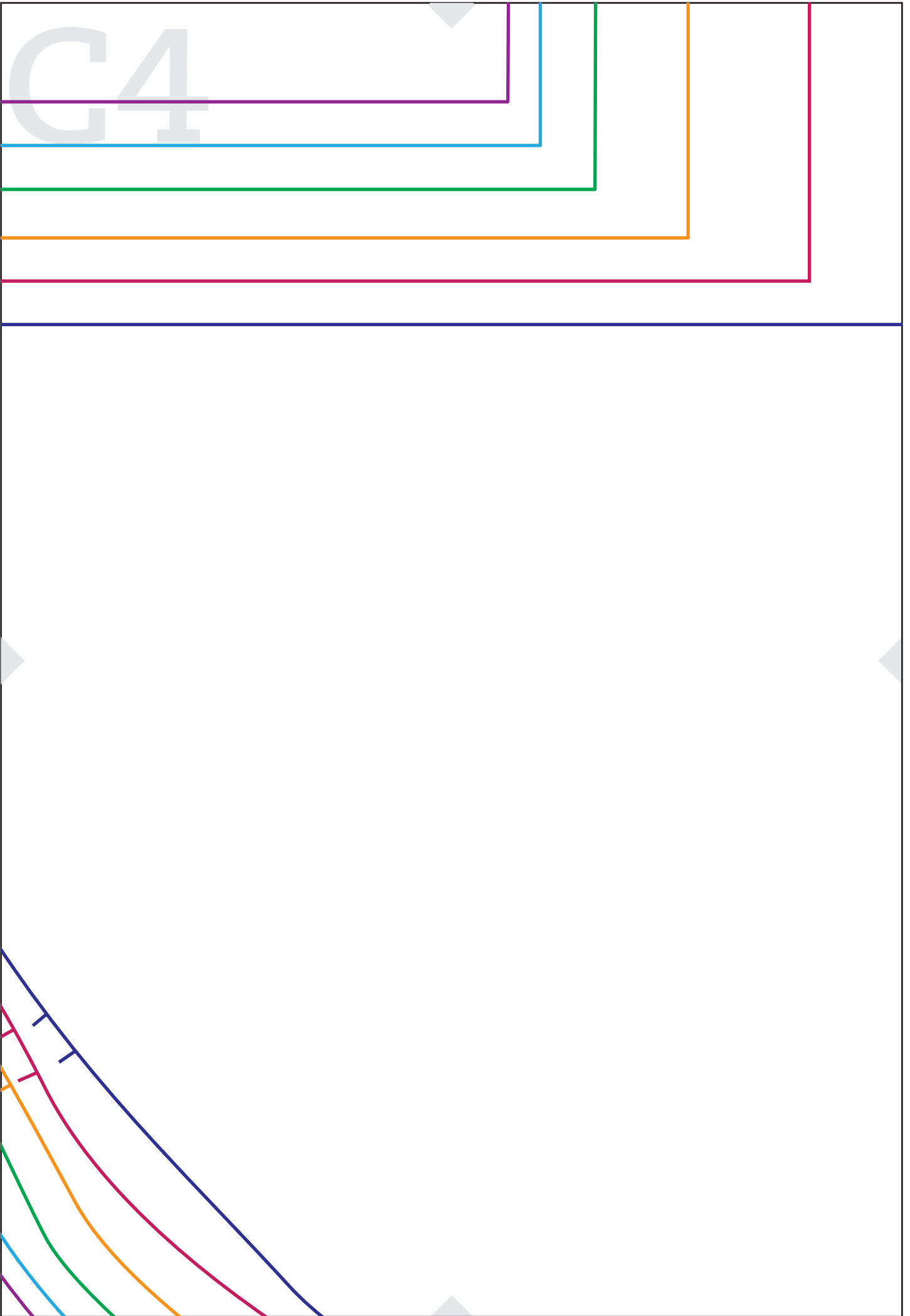


G2

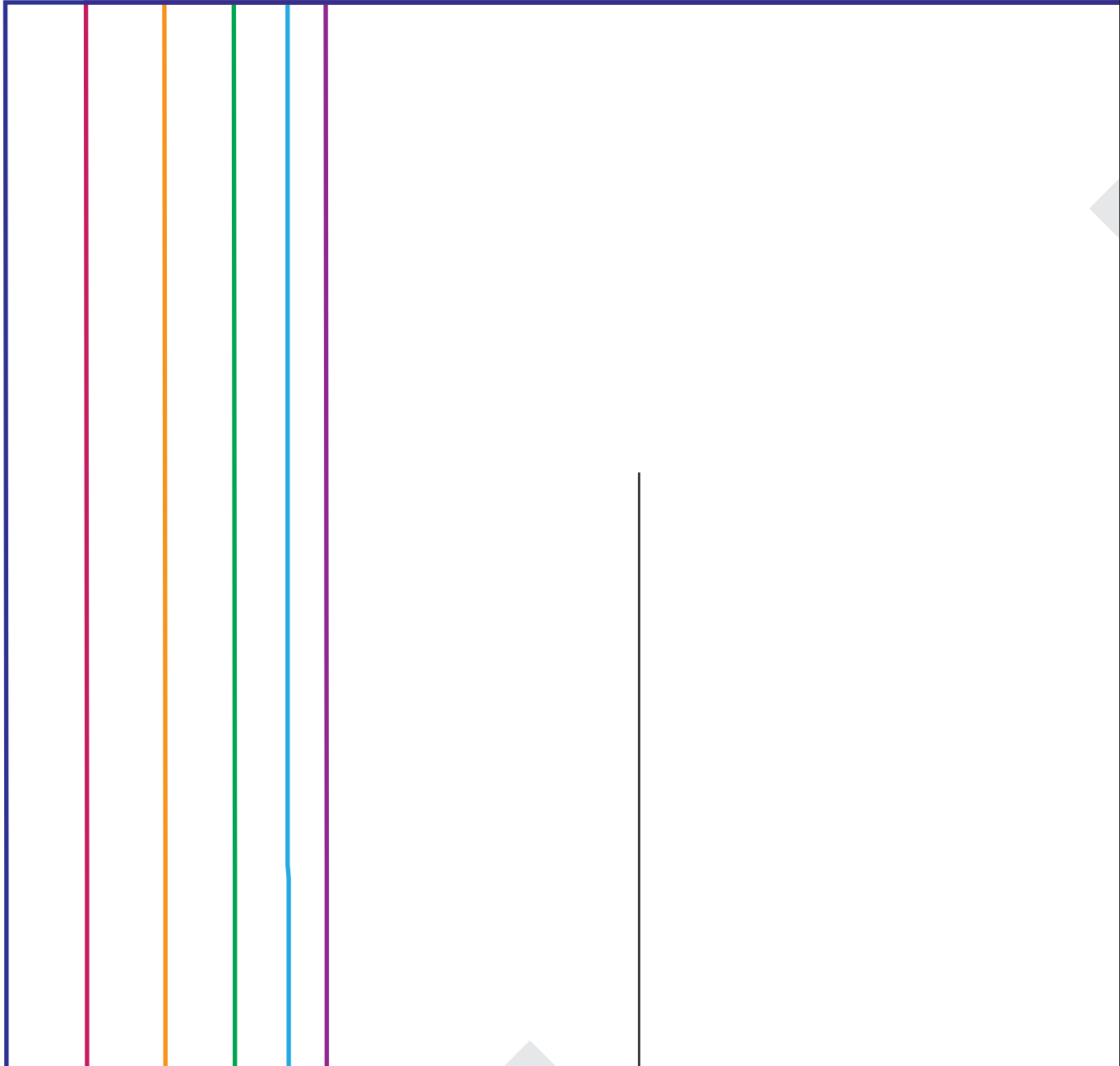




G4



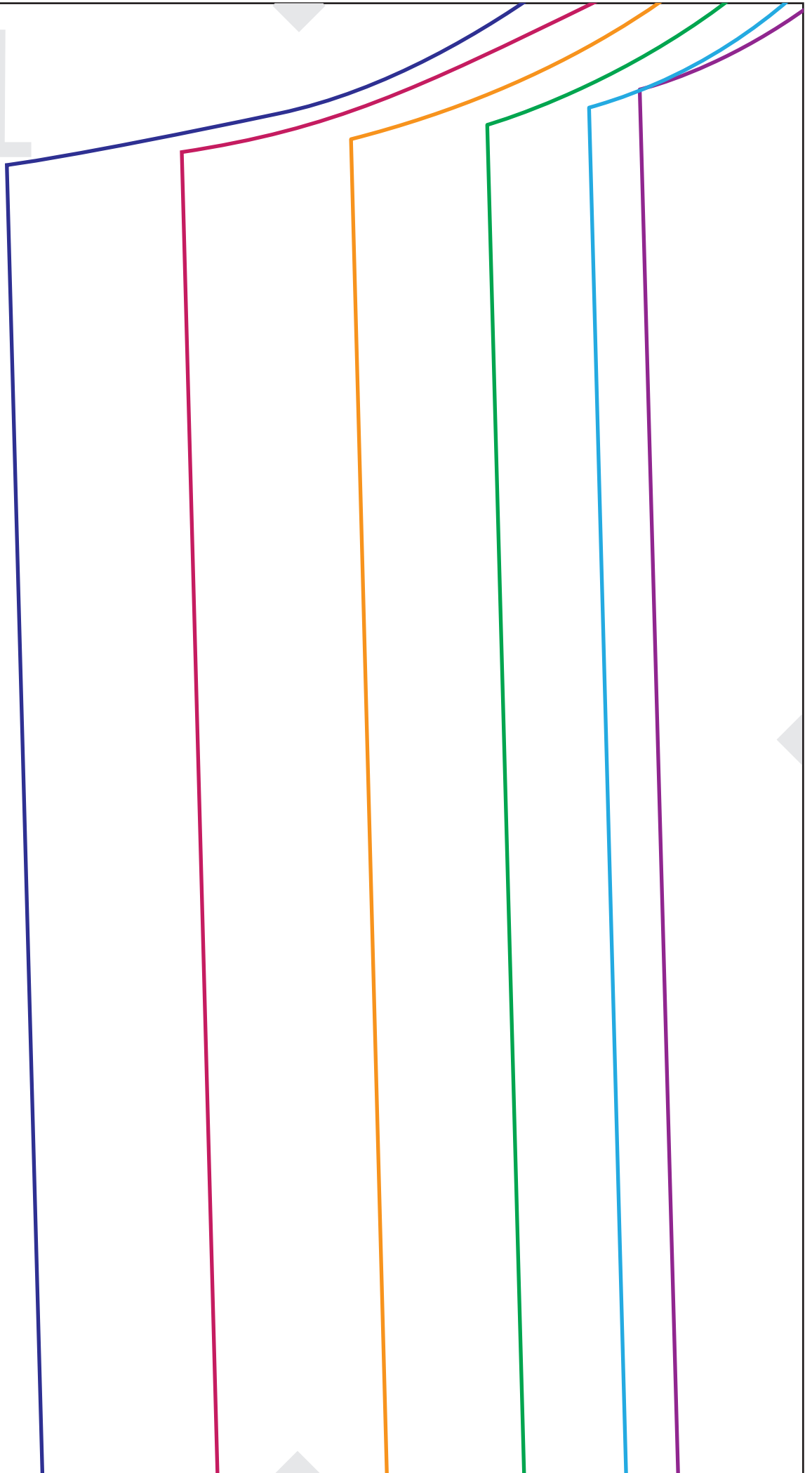
C5



C6

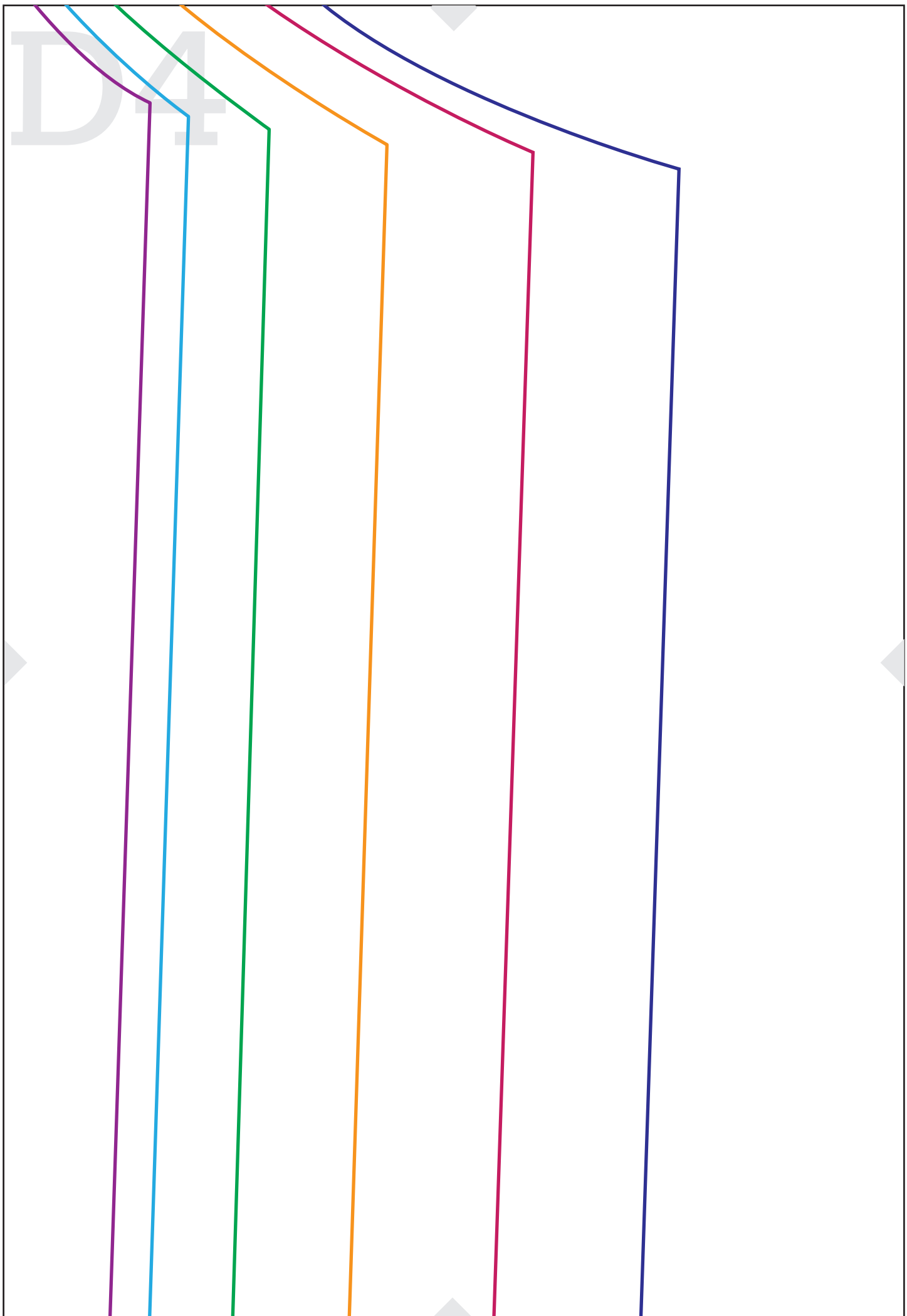
--	--	--	--	--	--

D1



D2

D3



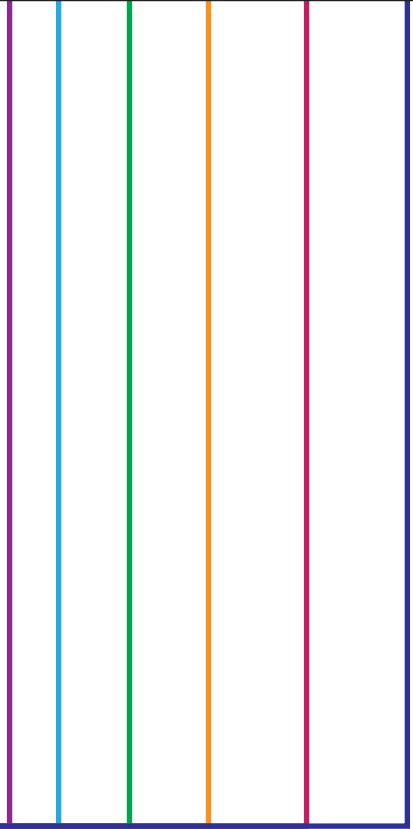
D5

Ma Bl
Pe
à couper 2 x d

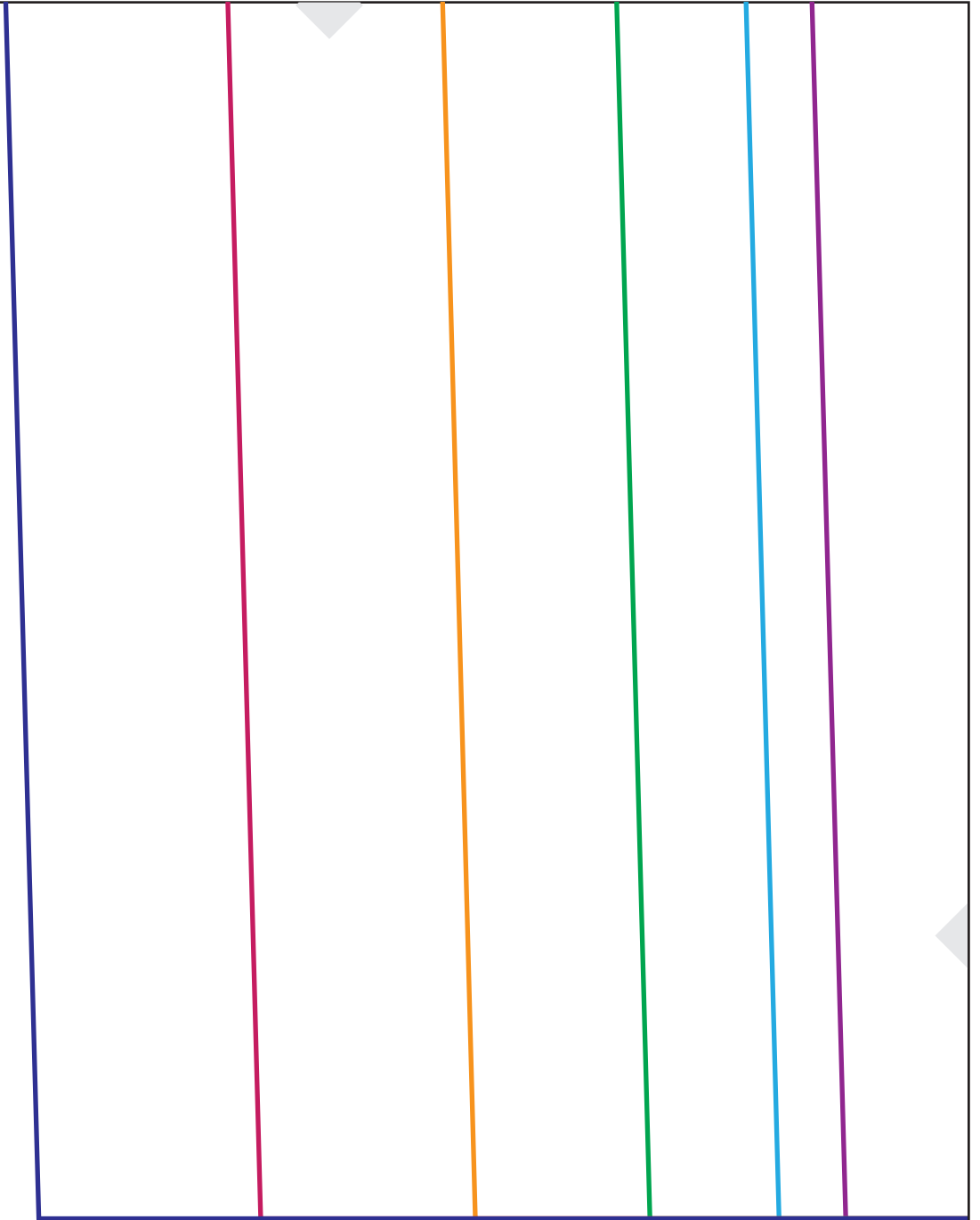
D6
E

House Emily
bignet

ans le tissu principal



E1



E2



E3

F

Ma blouse Emily
Manche

à couper 2 x dans le tissu principal

E4

