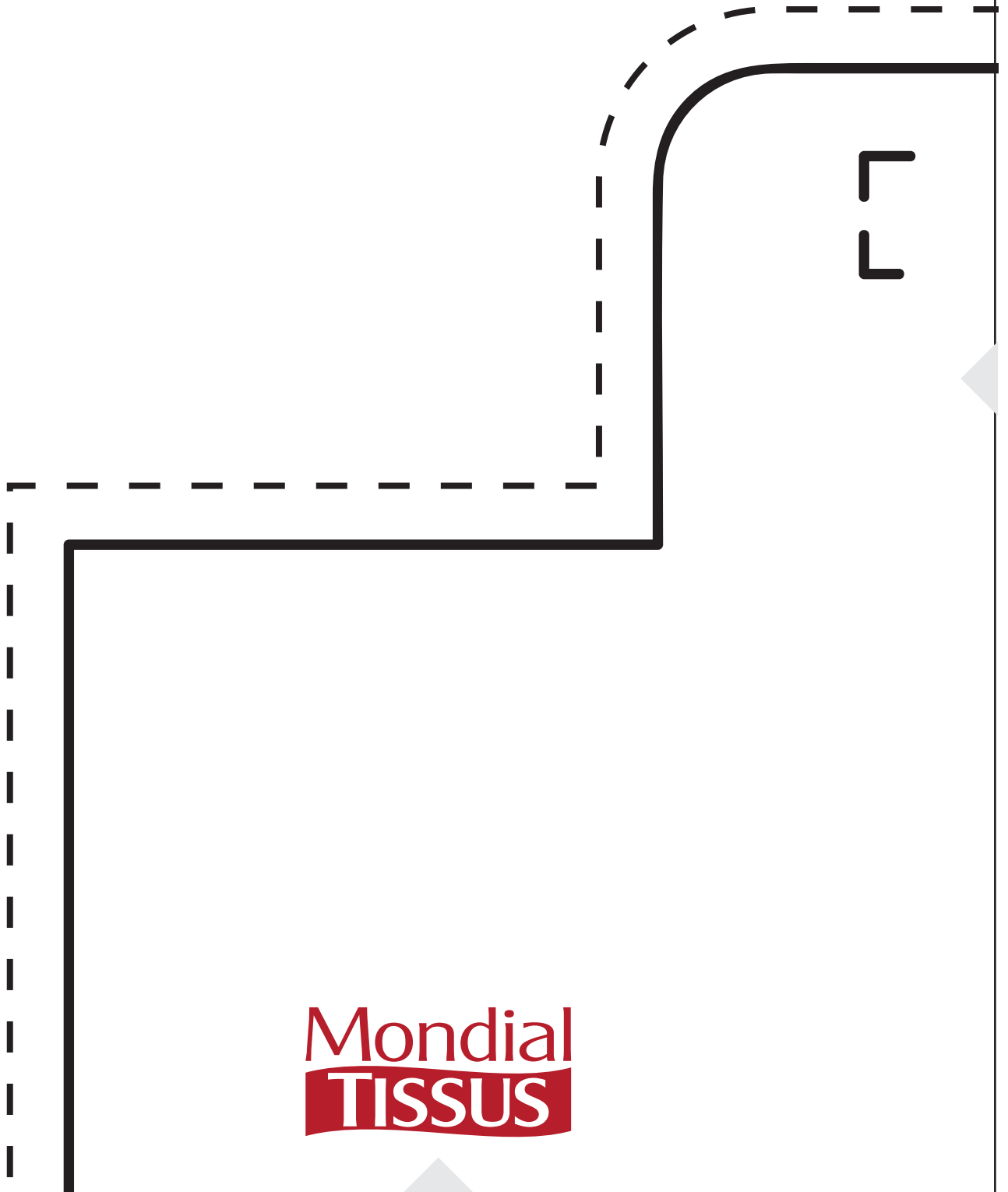
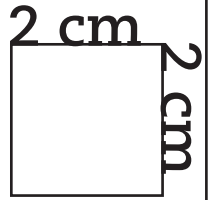


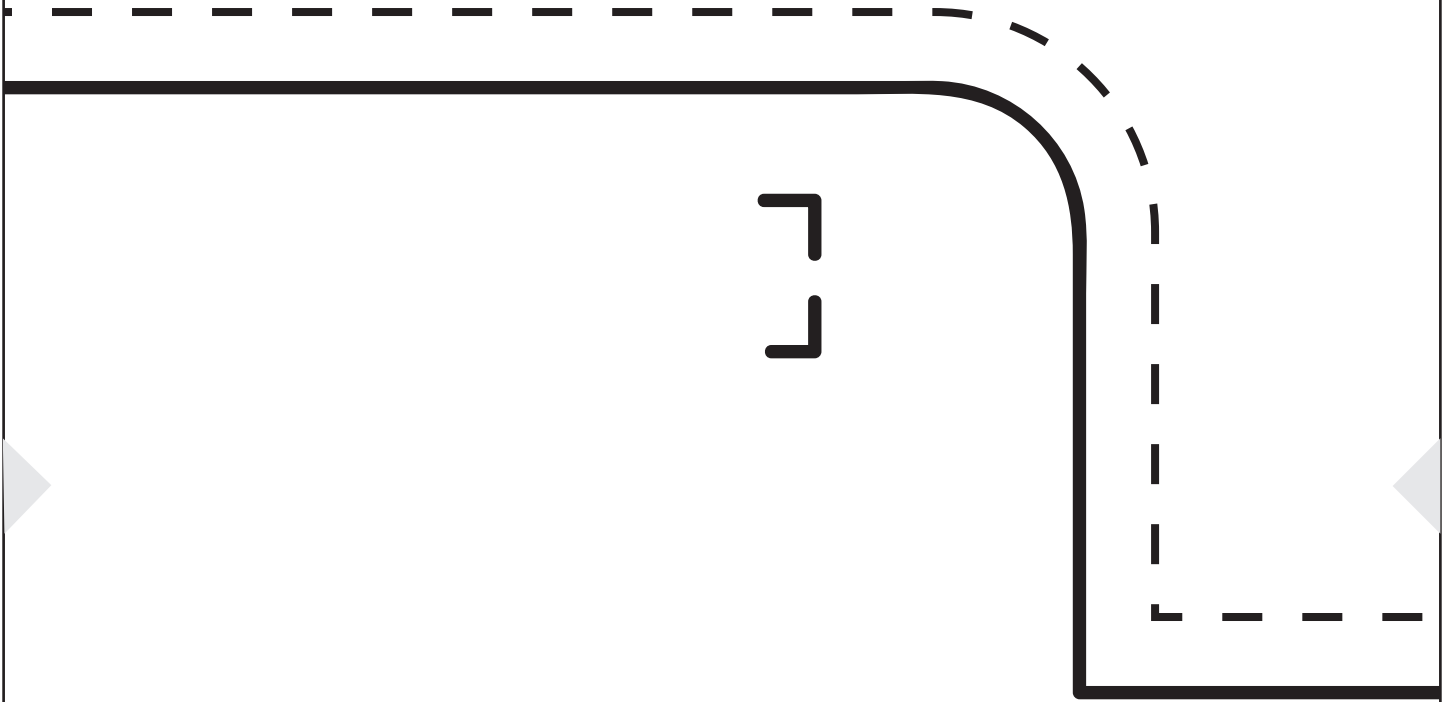
A1

Mon lunch bag



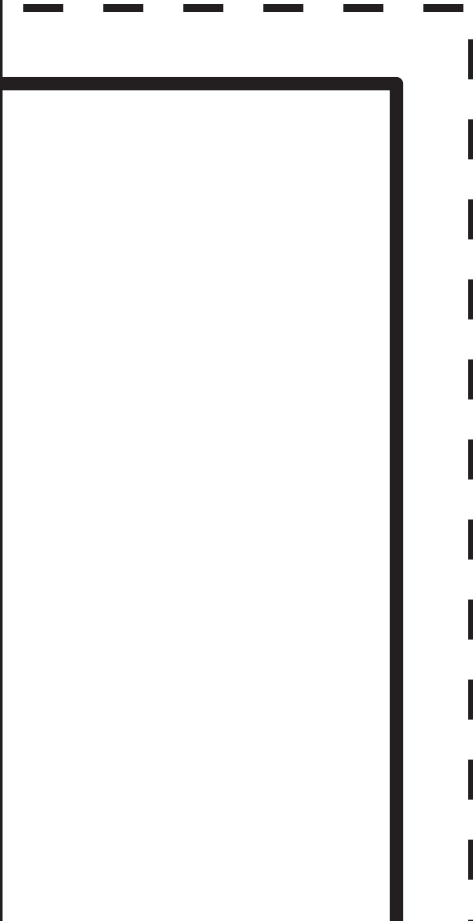
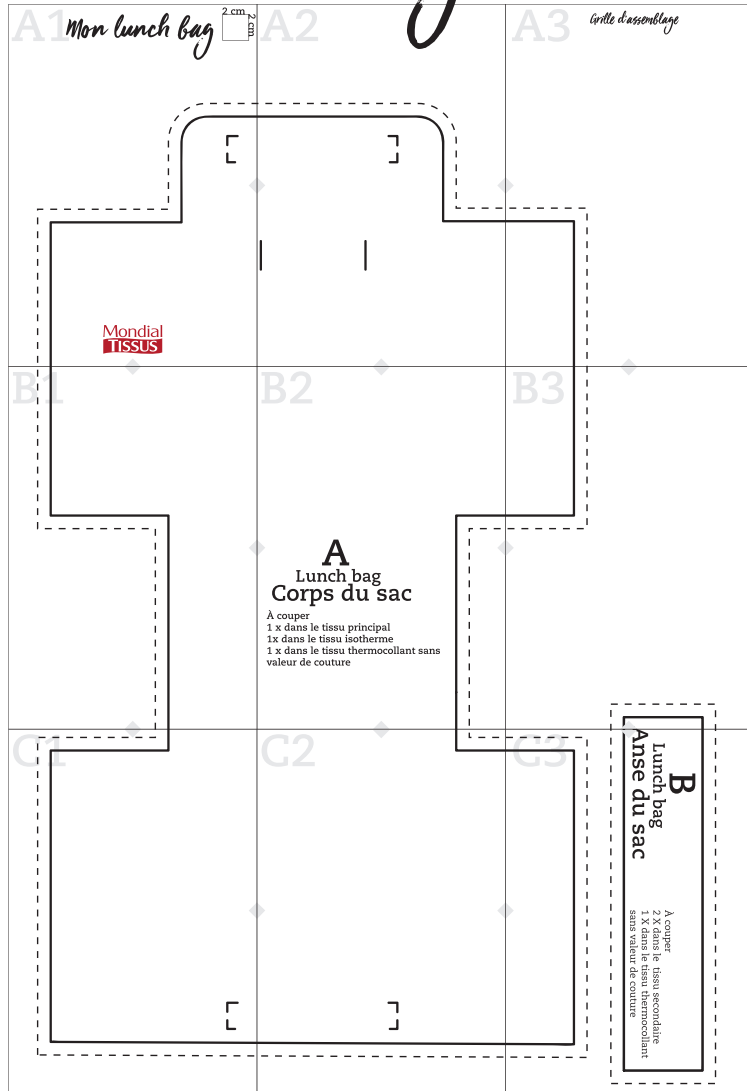
Mondial
TISSUS

A2

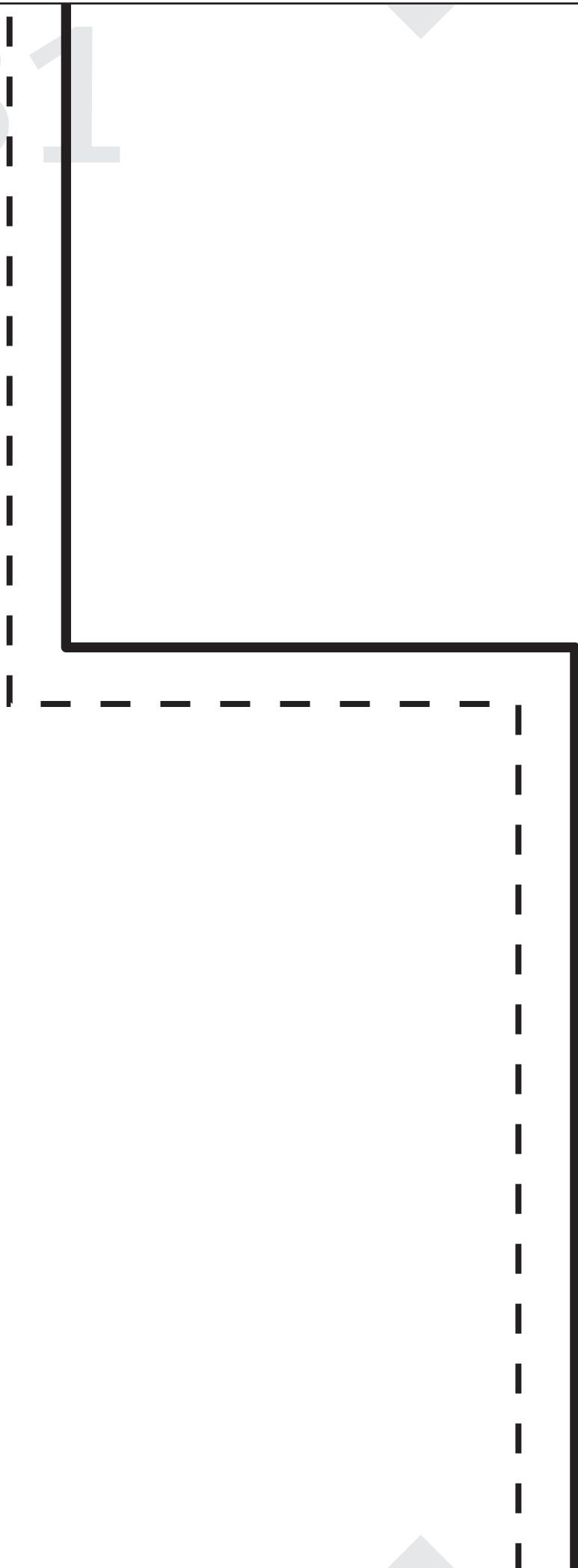


A3

Grille d'assemblage



B.1



B2

A

Lunch bag

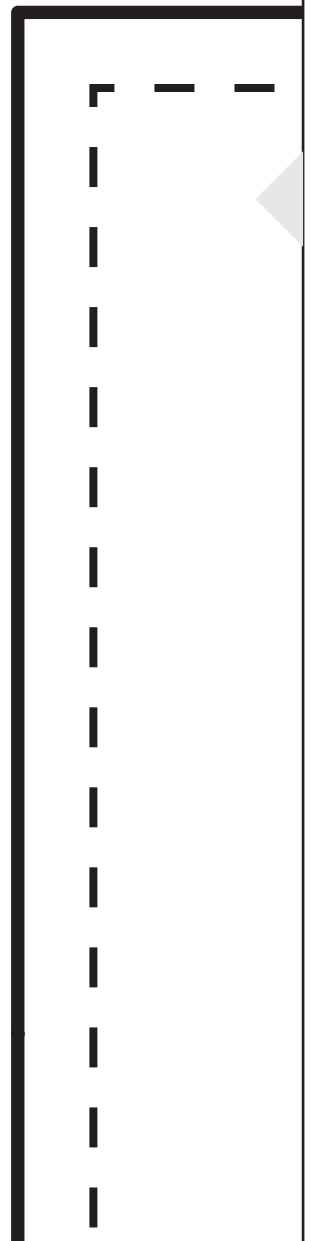
Corps du sac

À couper

1 x dans le tissu principal

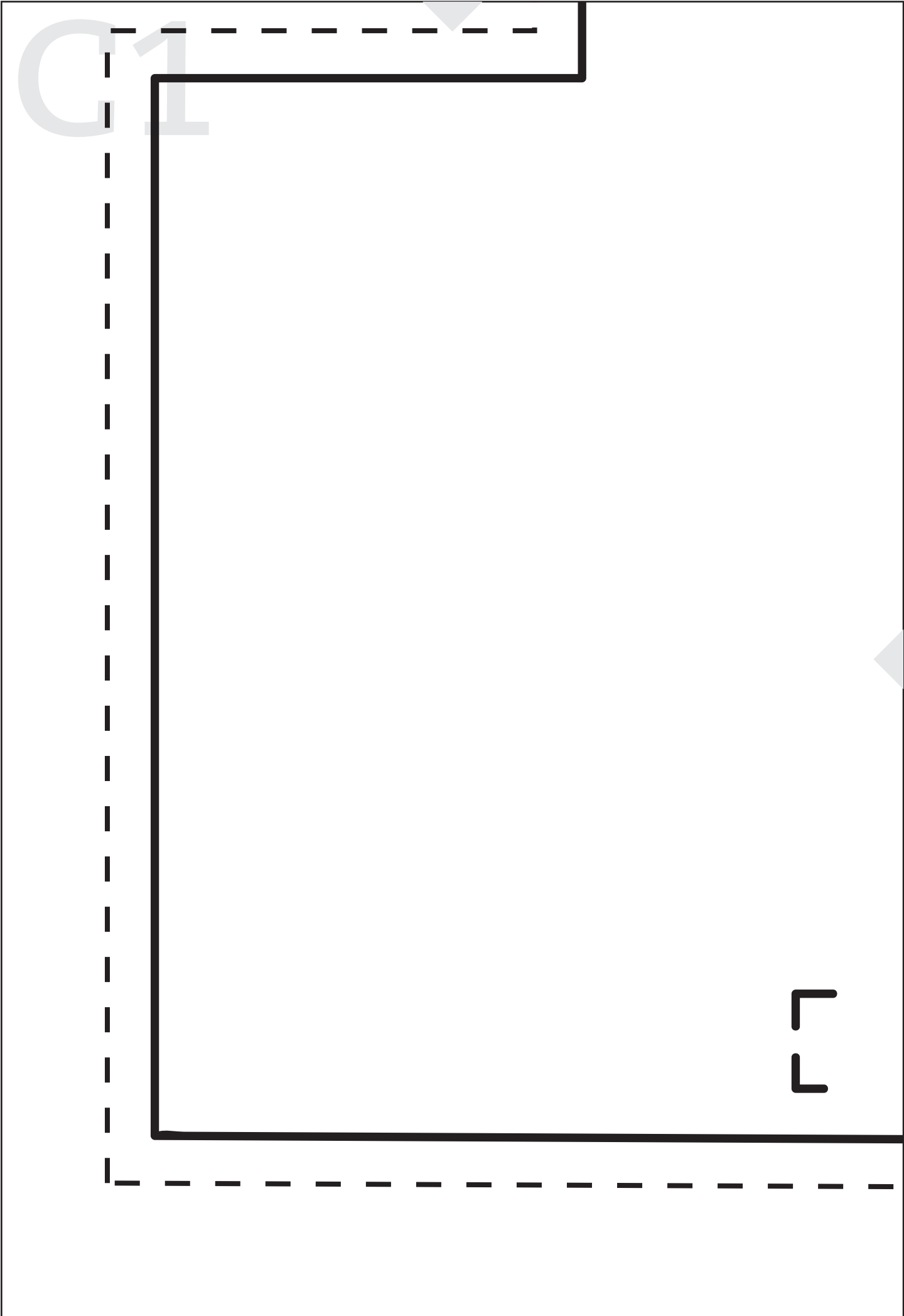
1x dans le tissu isotherme

1 x dans le tissu thermocollant sans
valeur de couture



B3





C2

L - -

]

- - - - -

B

Lunch bag

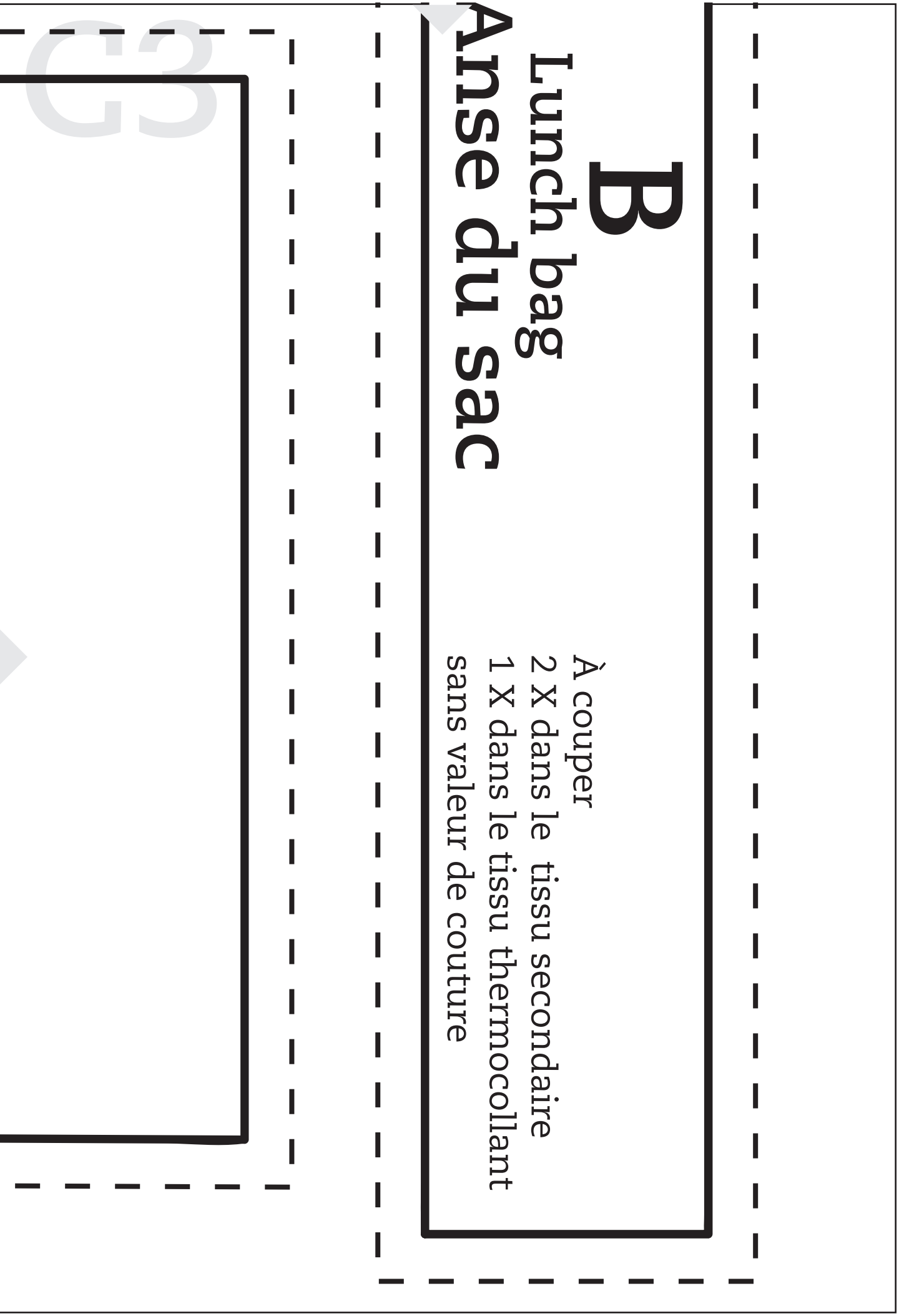
Anse du sac

À couper

2 X dans le tissu secondaire

1 X dans le tissu thermocollant

sans valeur de couture



3