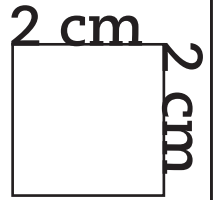


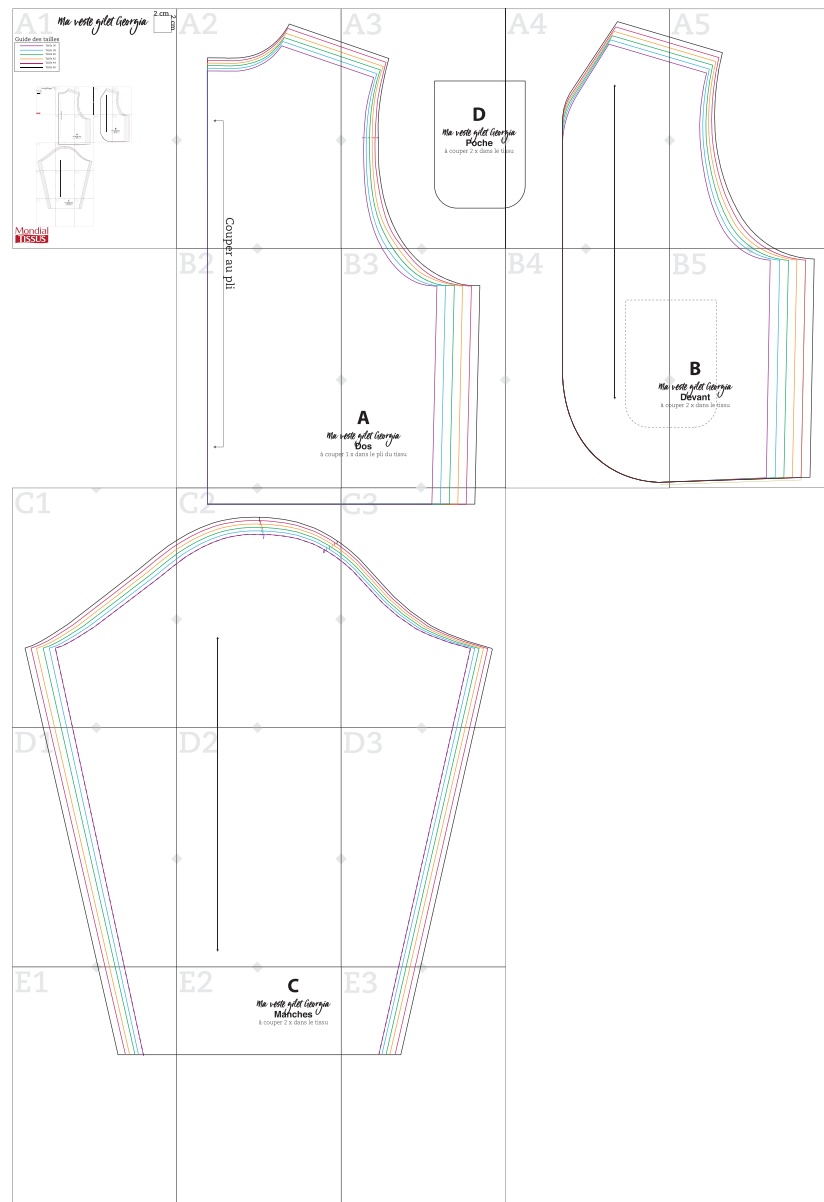
A1

Ma veste gilet Georgia

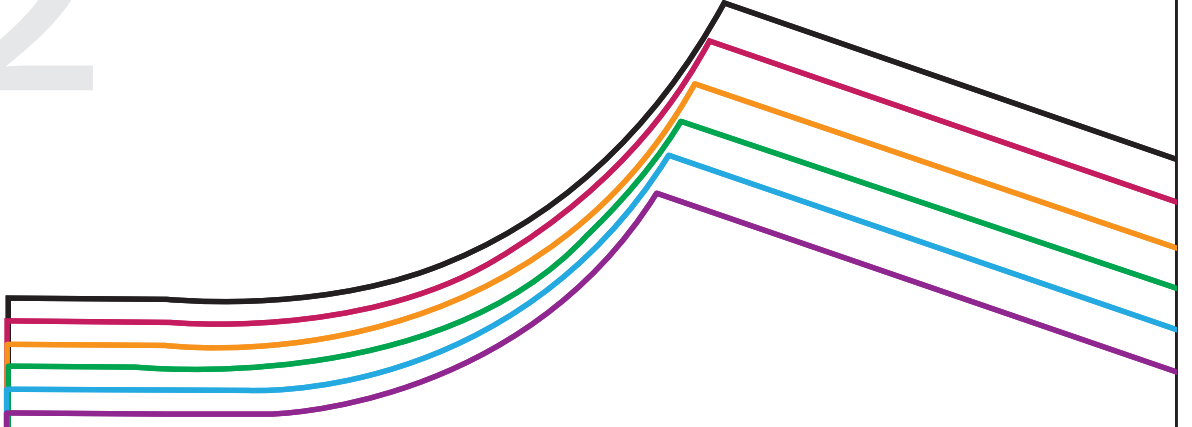


Guide des tailles

	Taille 36
	Taille 38
	Taille 40
	Taille 42
	Taille 44
	Taille 46

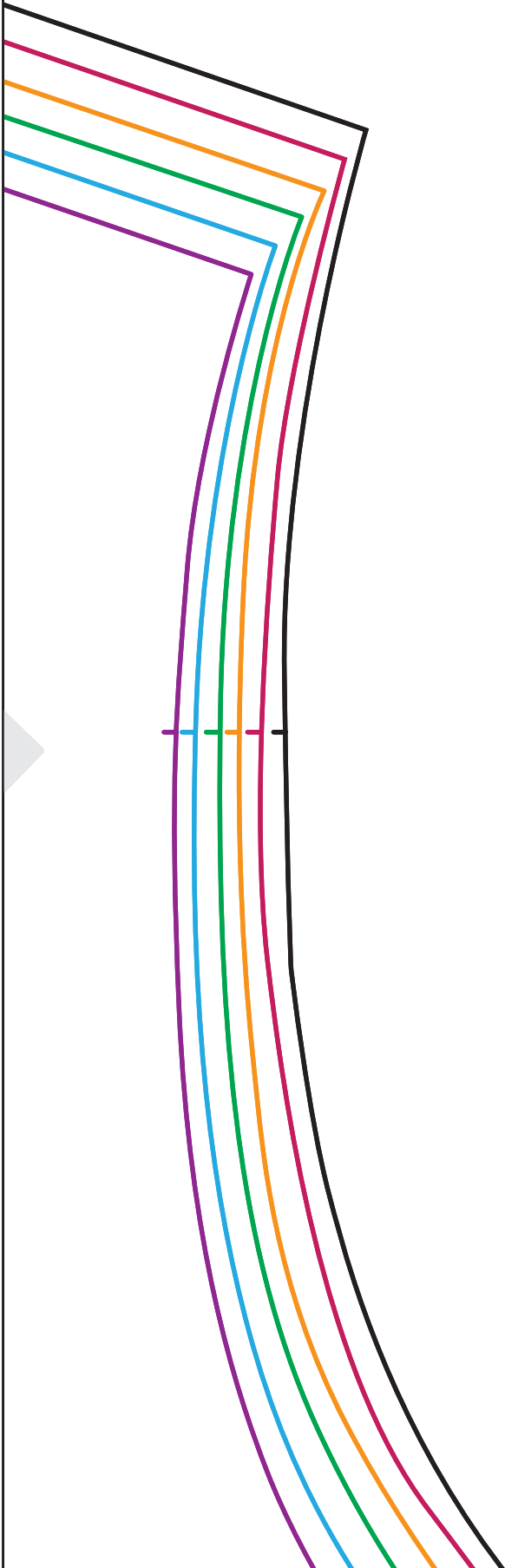


A2



Coupe

A3

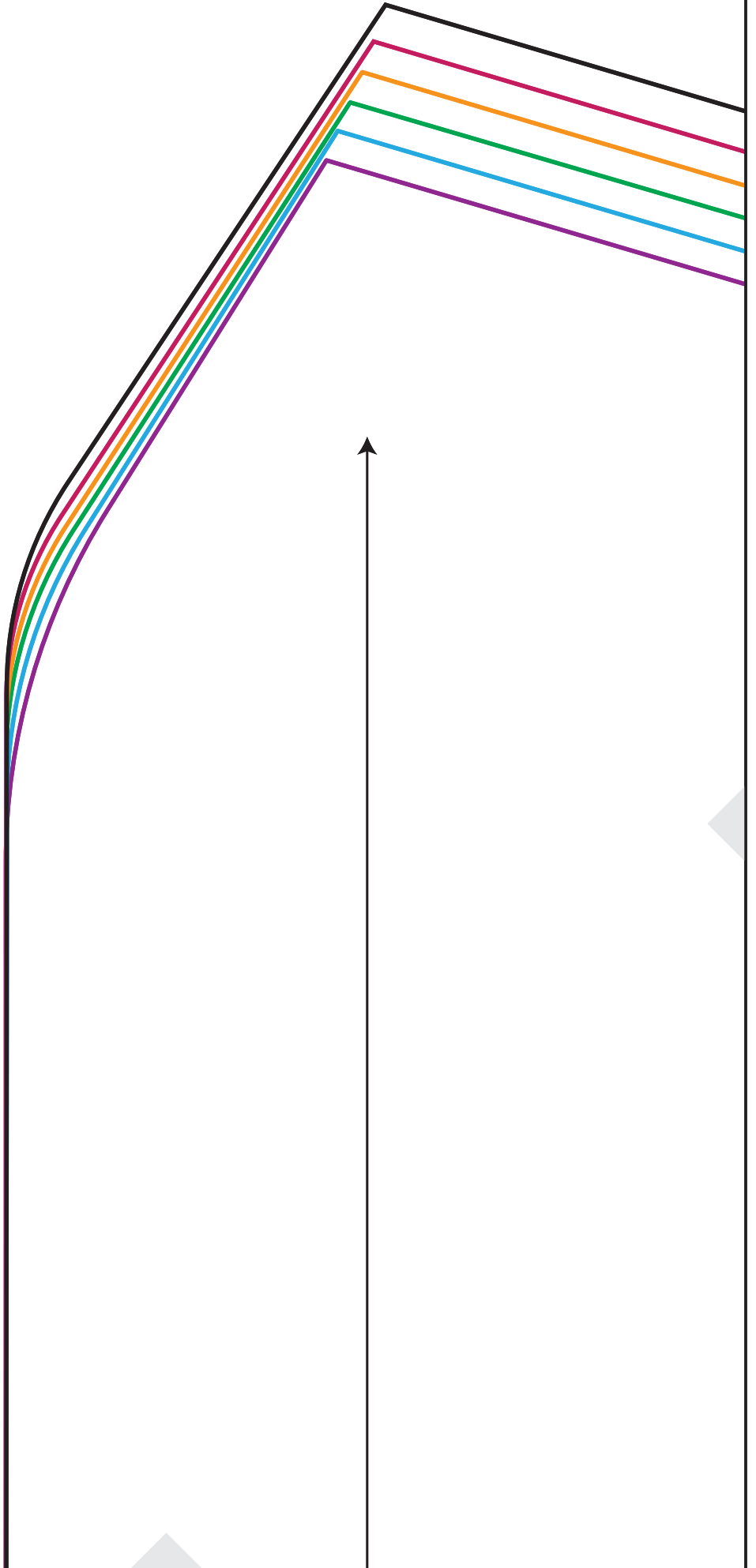


D

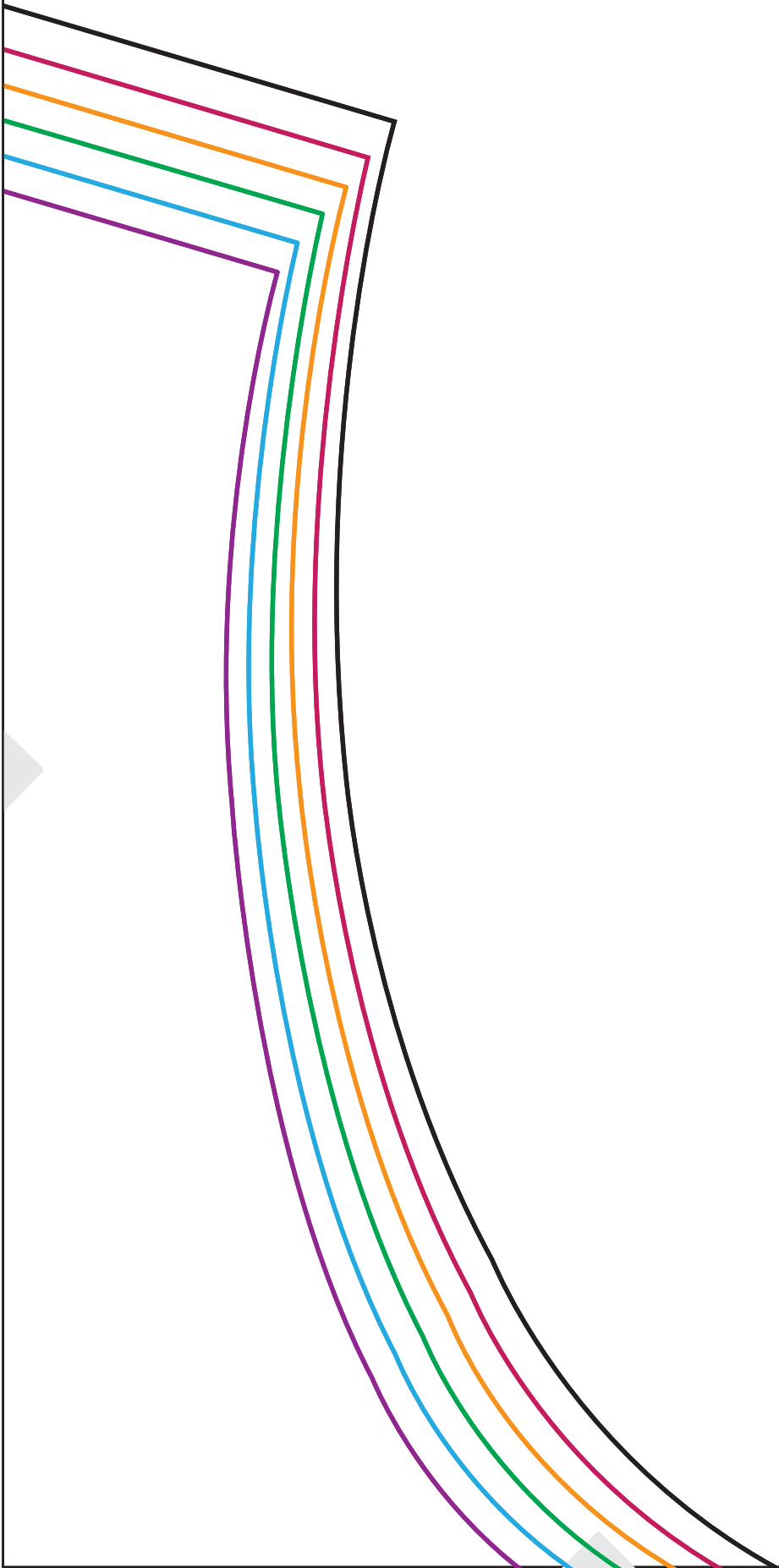
Ma veste gilet George
Poche

à couper 2 x dans le tissu

A4



A5



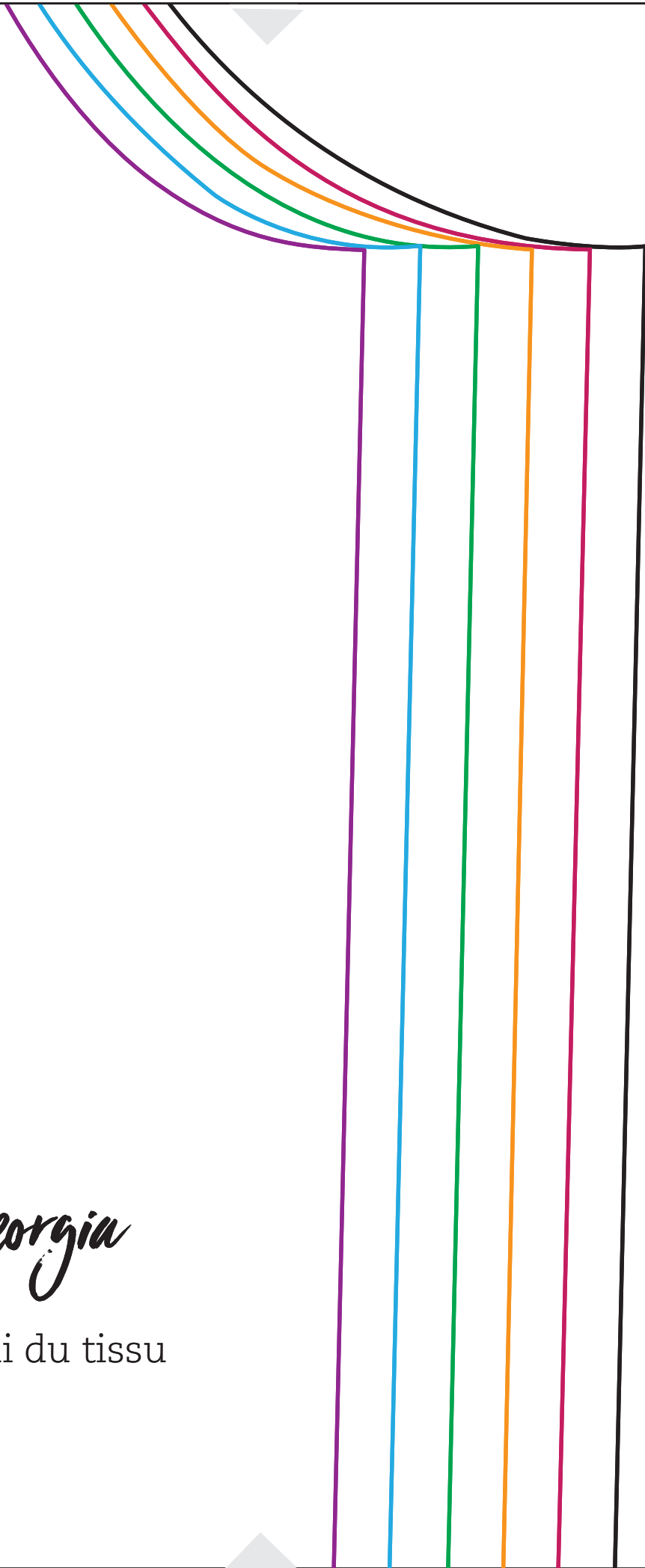
B2

er au pli



Ma
à coupe

B3



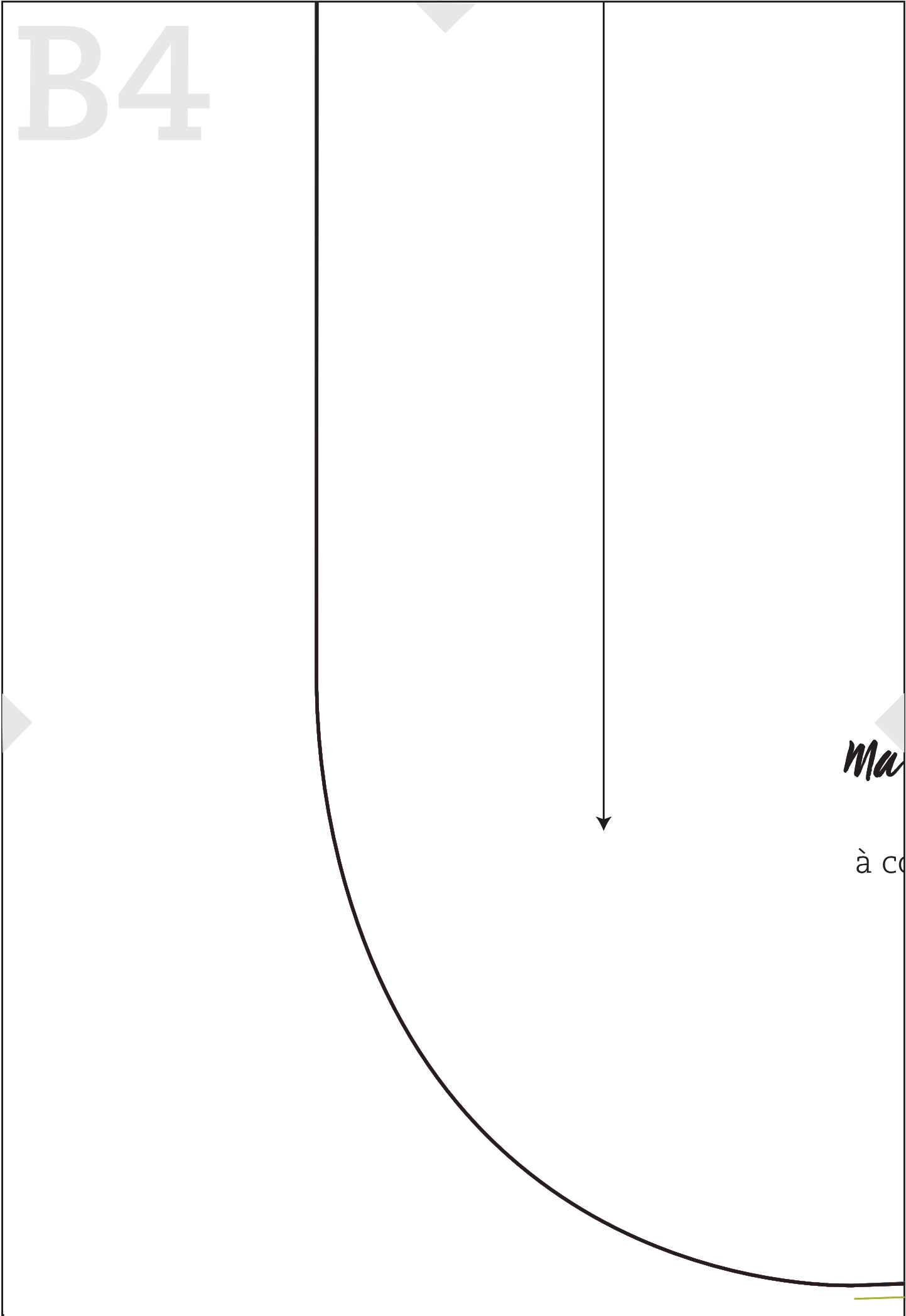
A

reste gilet Georgia

Dos

r 1 x dans le pli du tissu

B4



Ma

à c

B5

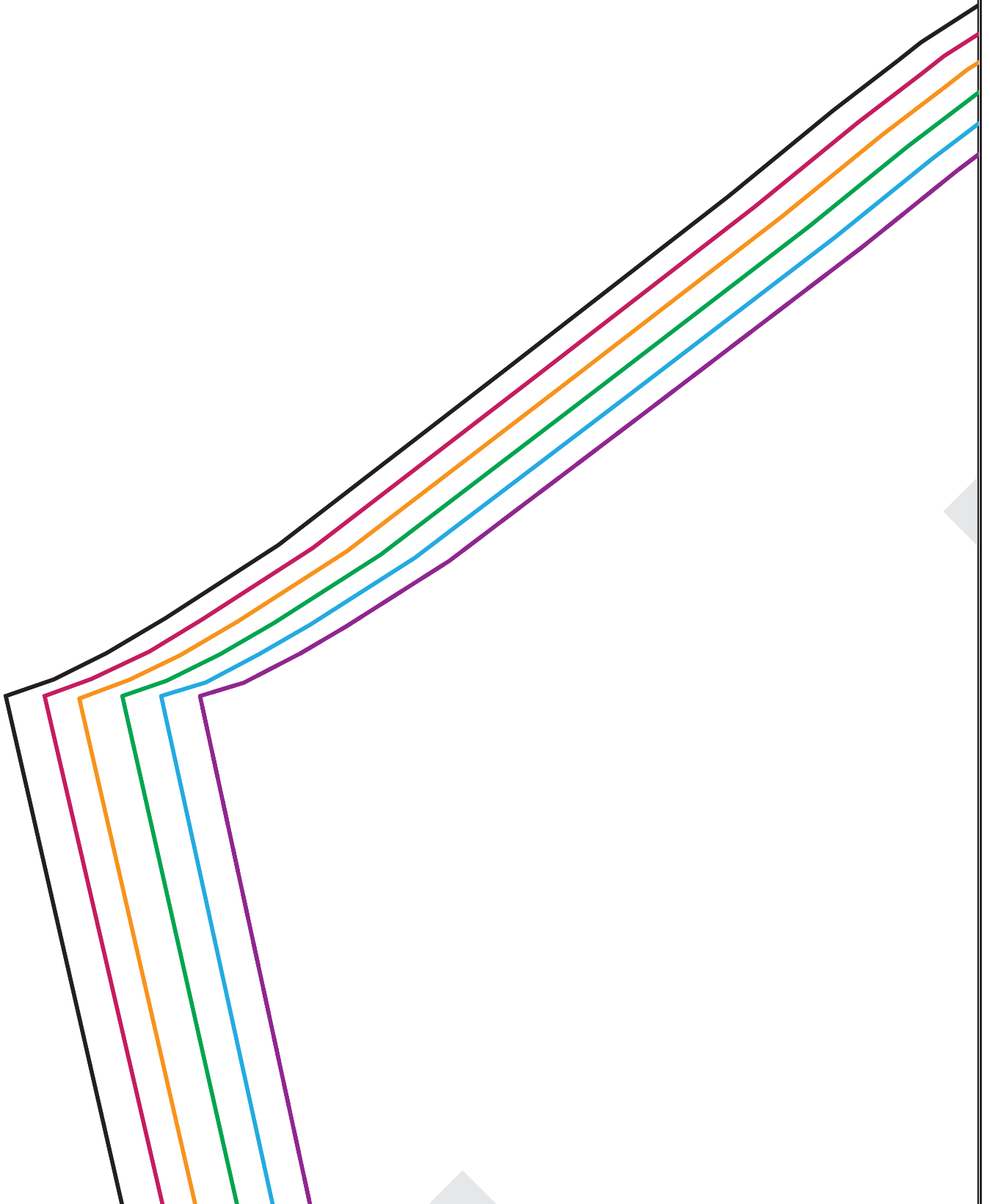
B

veste gilet Georgia
Devant

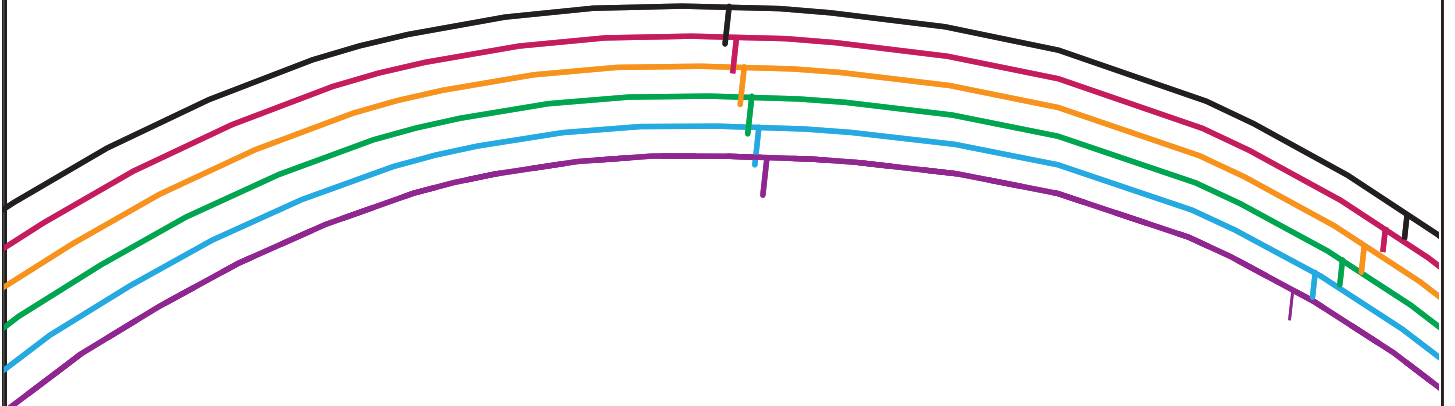
couper 2 x dans le tissu



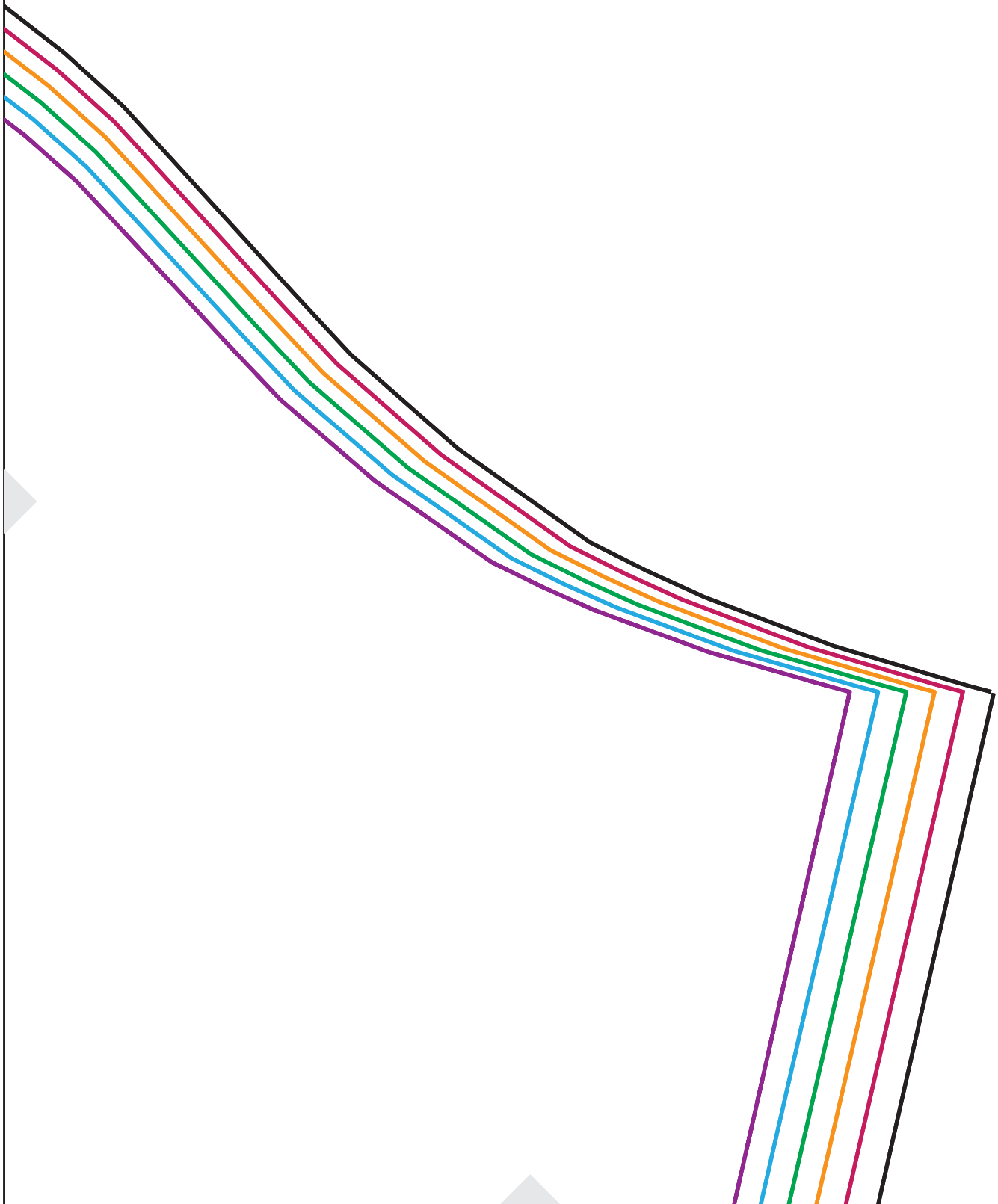
C1



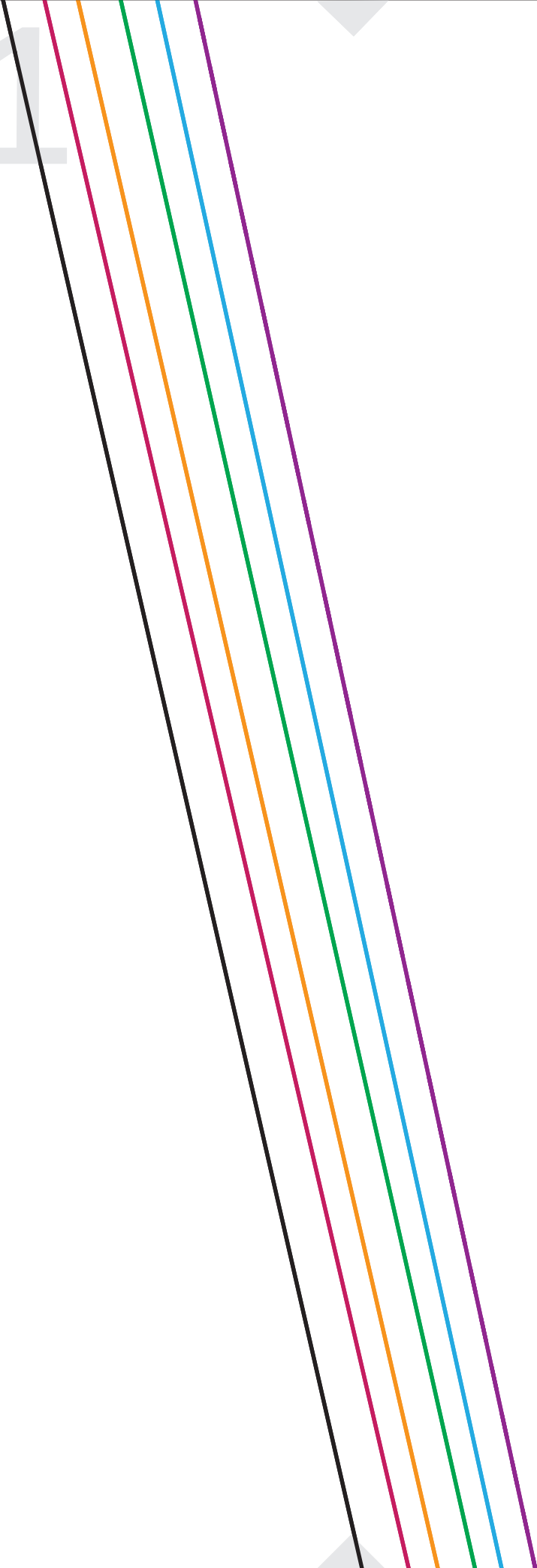
G2



G3



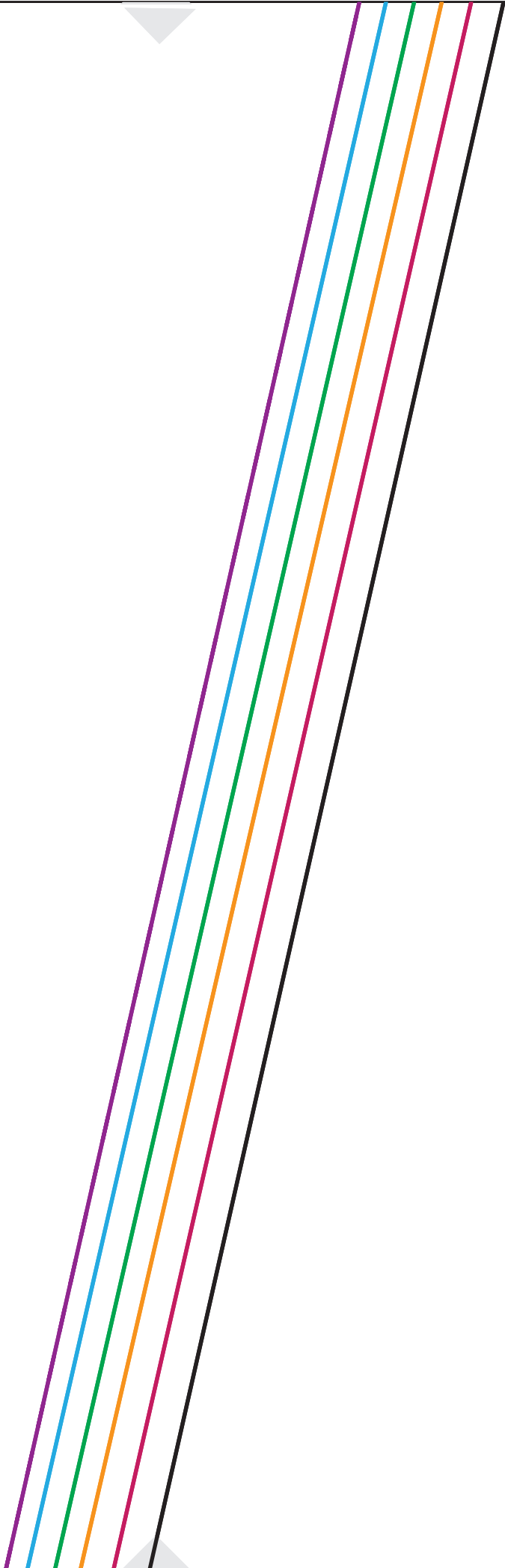
D1



D2



D3



E1



E2

C

Ma veste gilet Georgia
Manches
à couper 2 x dans le tissu

E3

