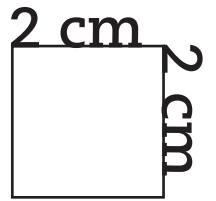
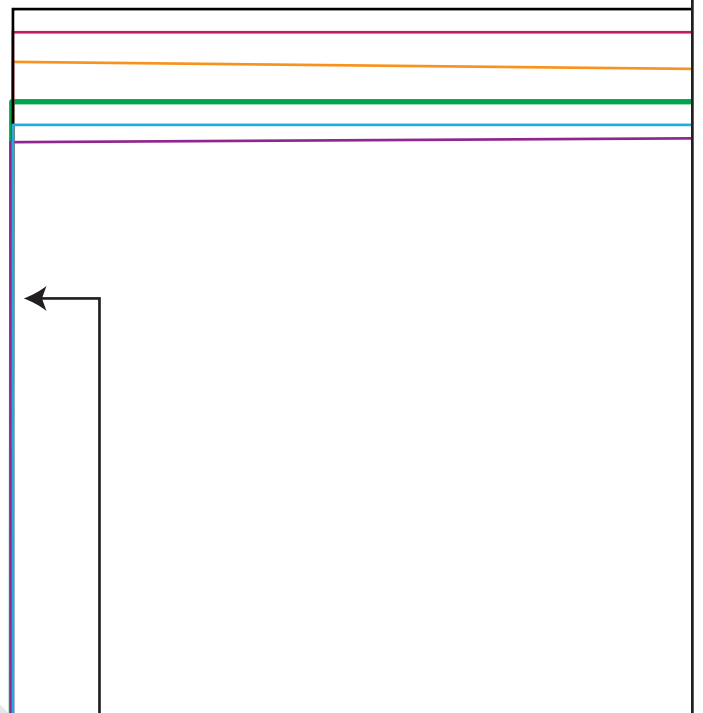
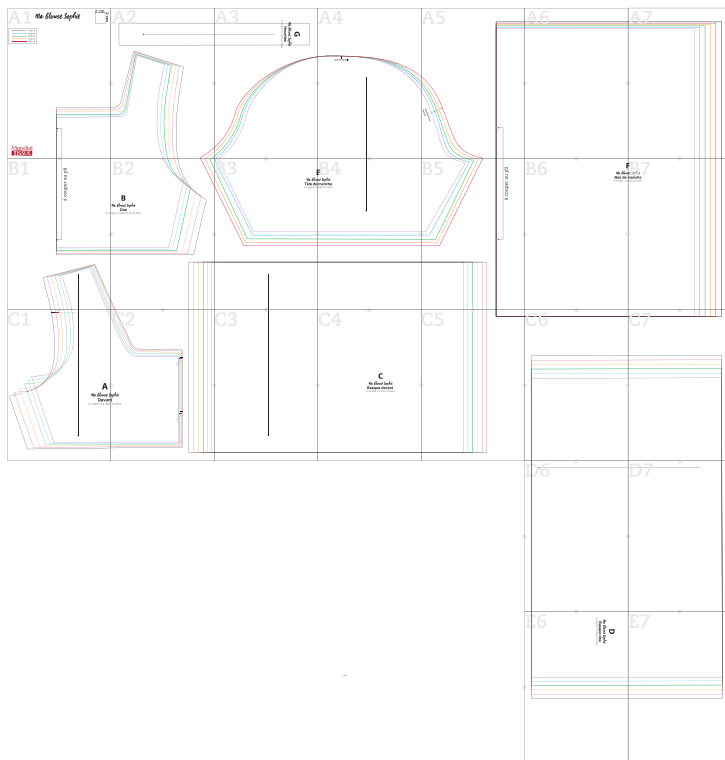


# A1

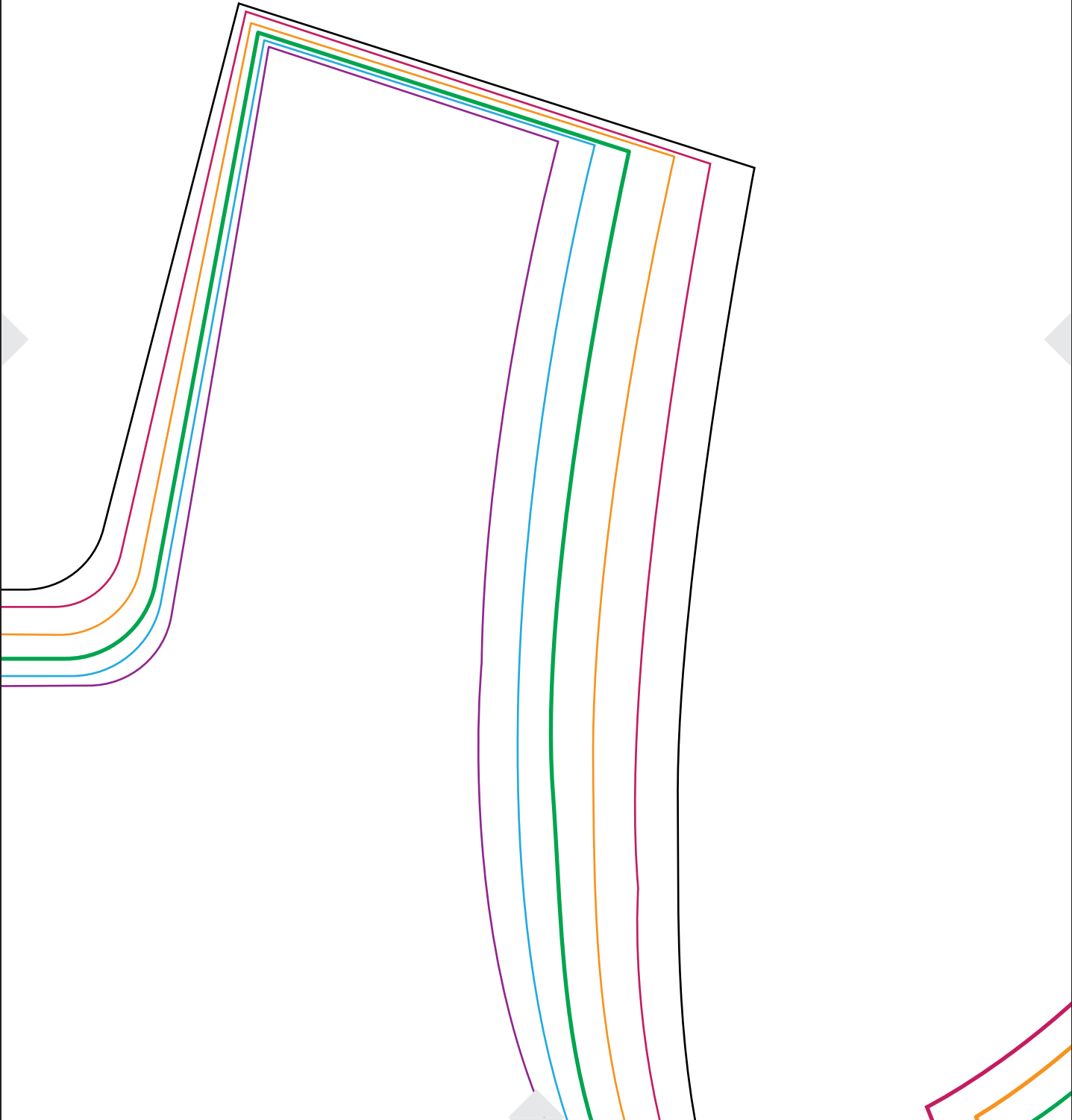
## Ma blouse Sophie



	Taille 36
	Taille 38
	Taille 40
	Taille 42
	Taille 44



# A2



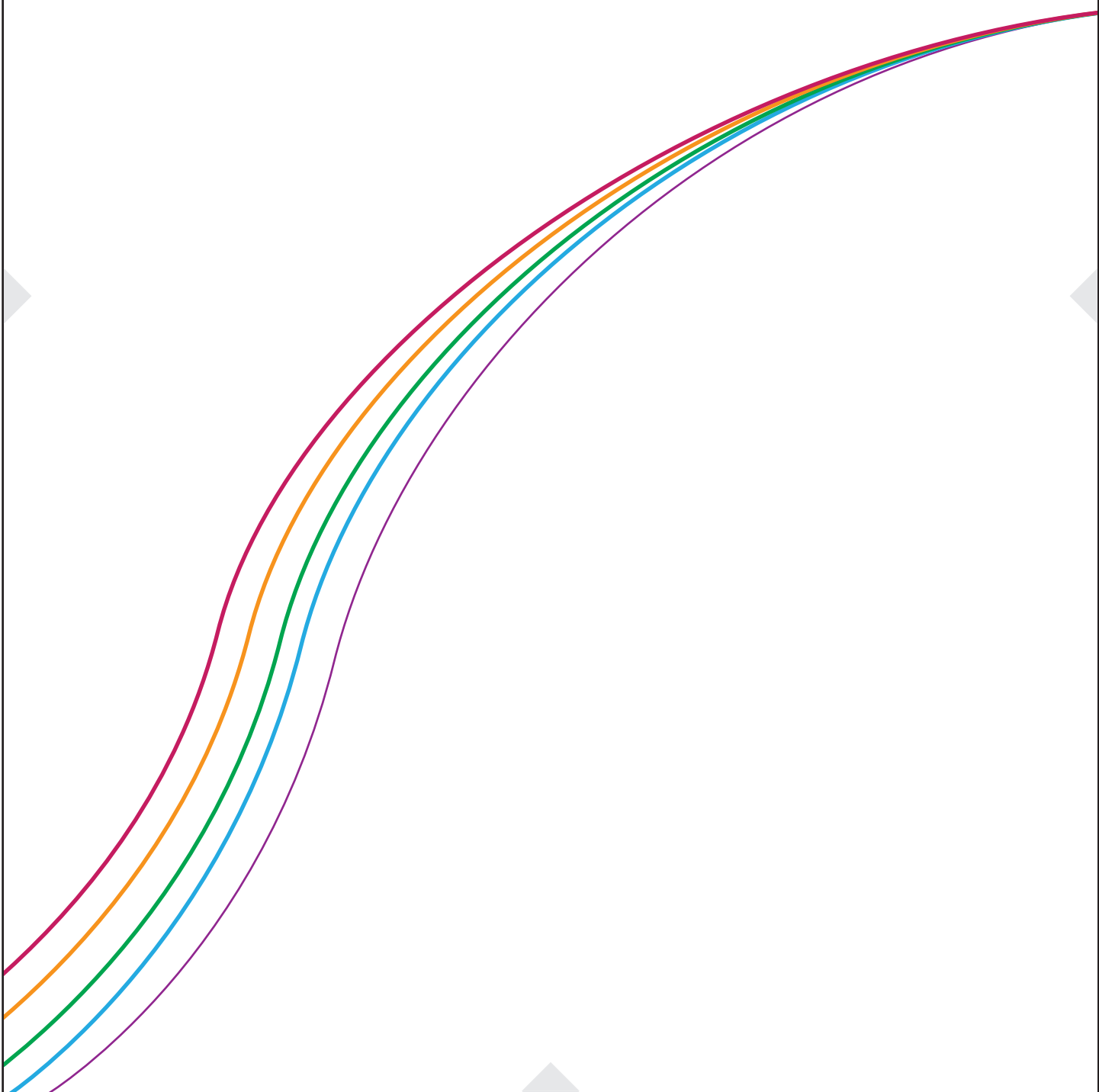
A3

**G**

*Ma Blouse Sophie*

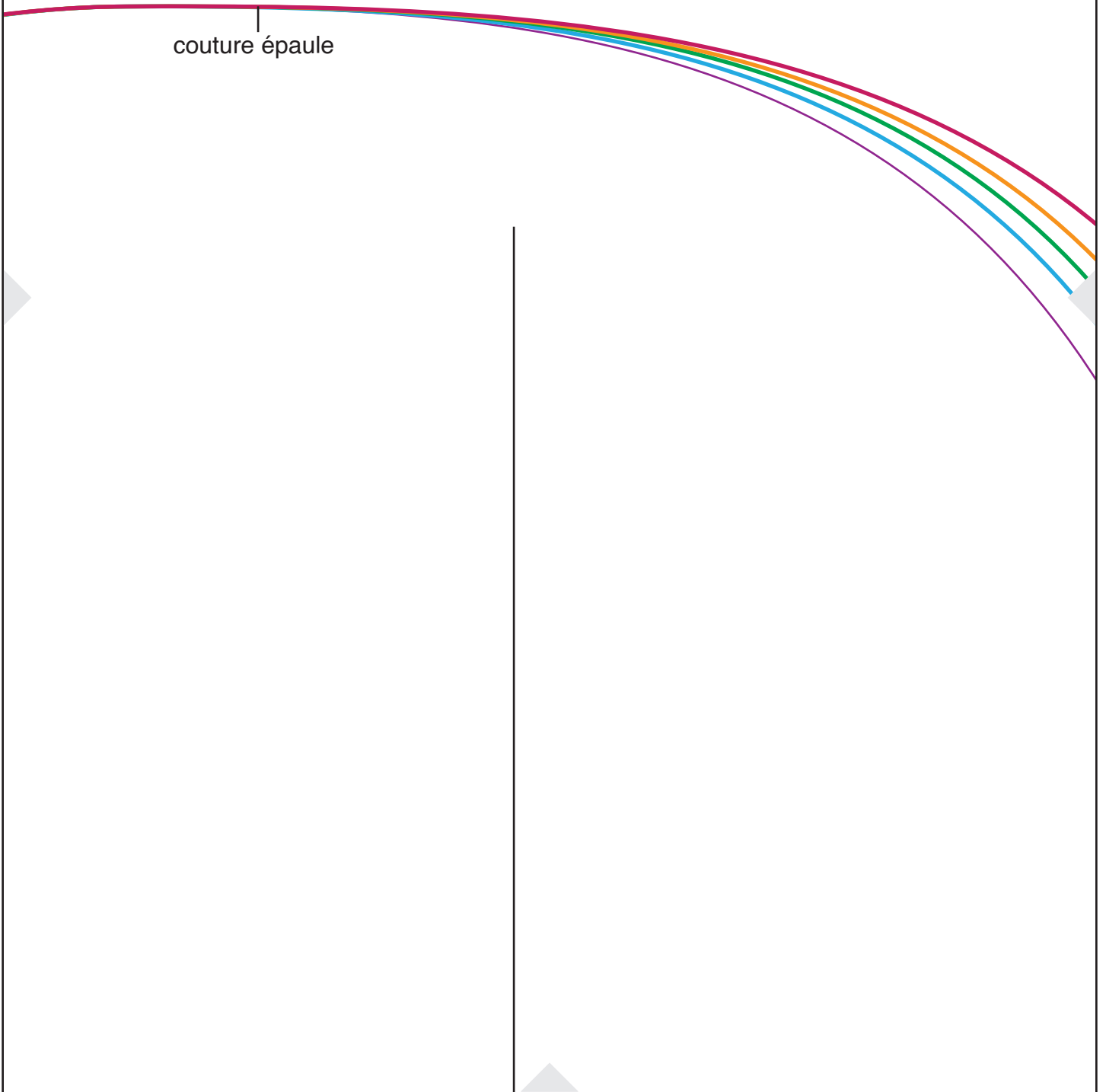
**Nouettes**

à couper 6 x dans le tissu

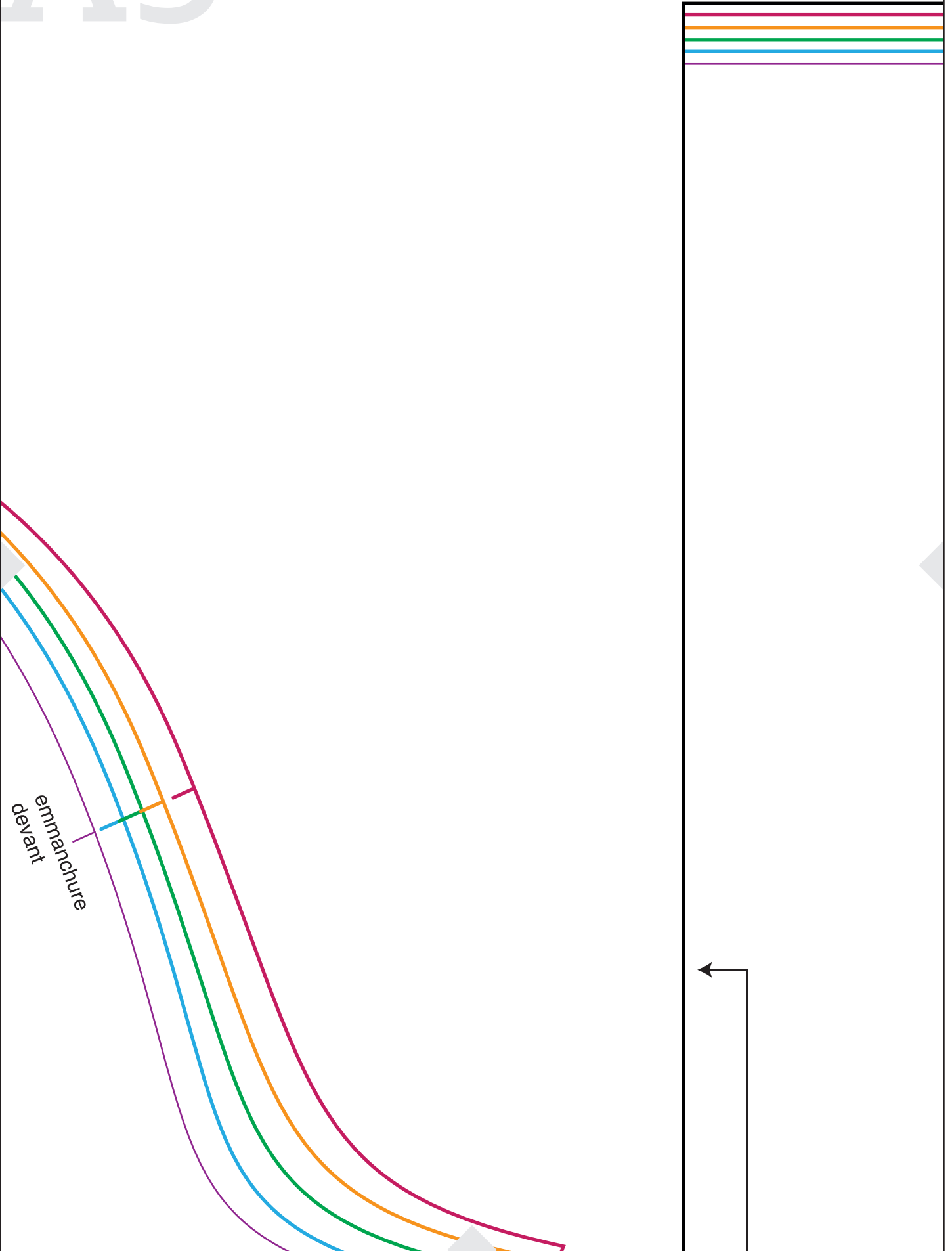


# A4

couture épaule



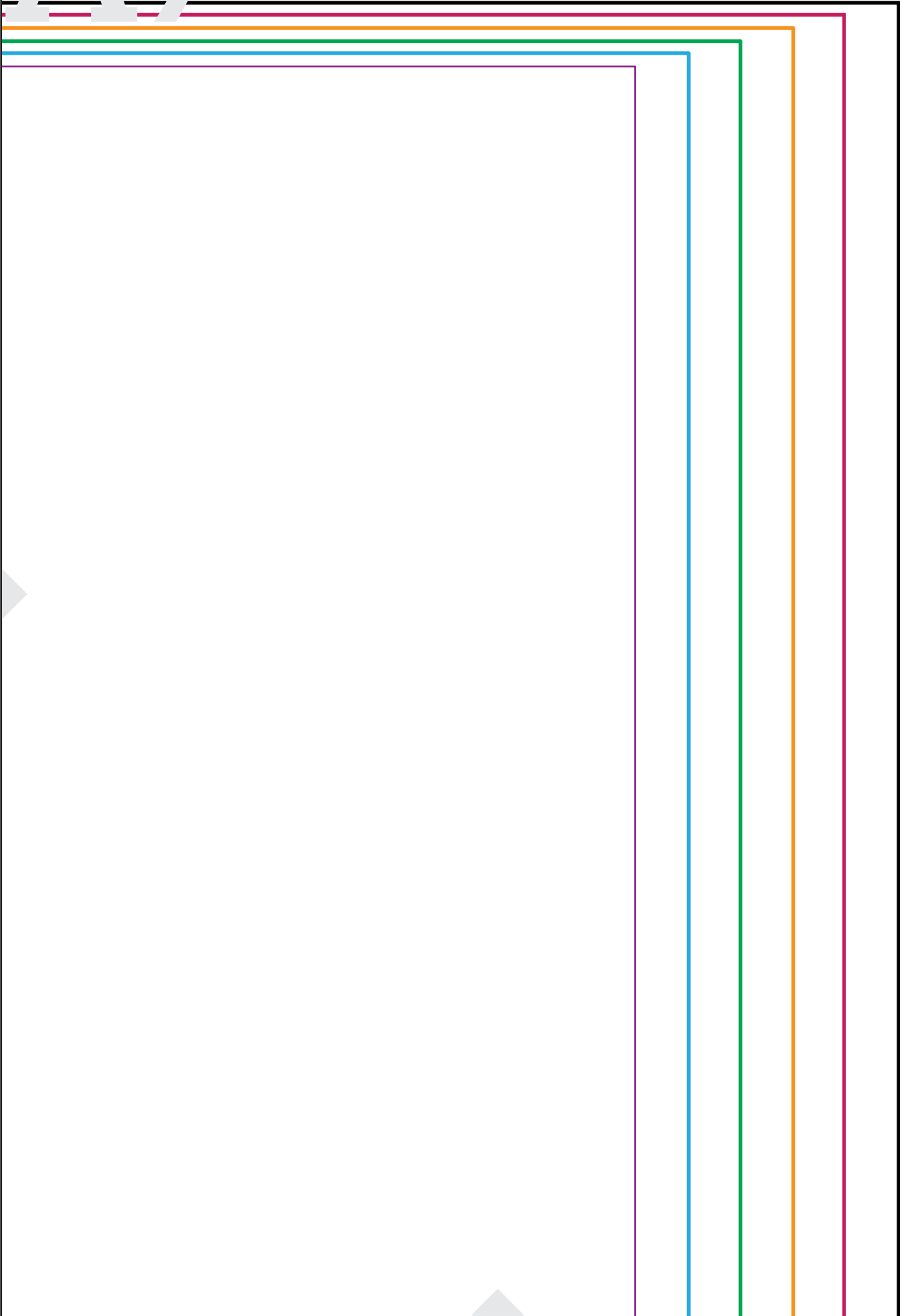
# A5



# A6



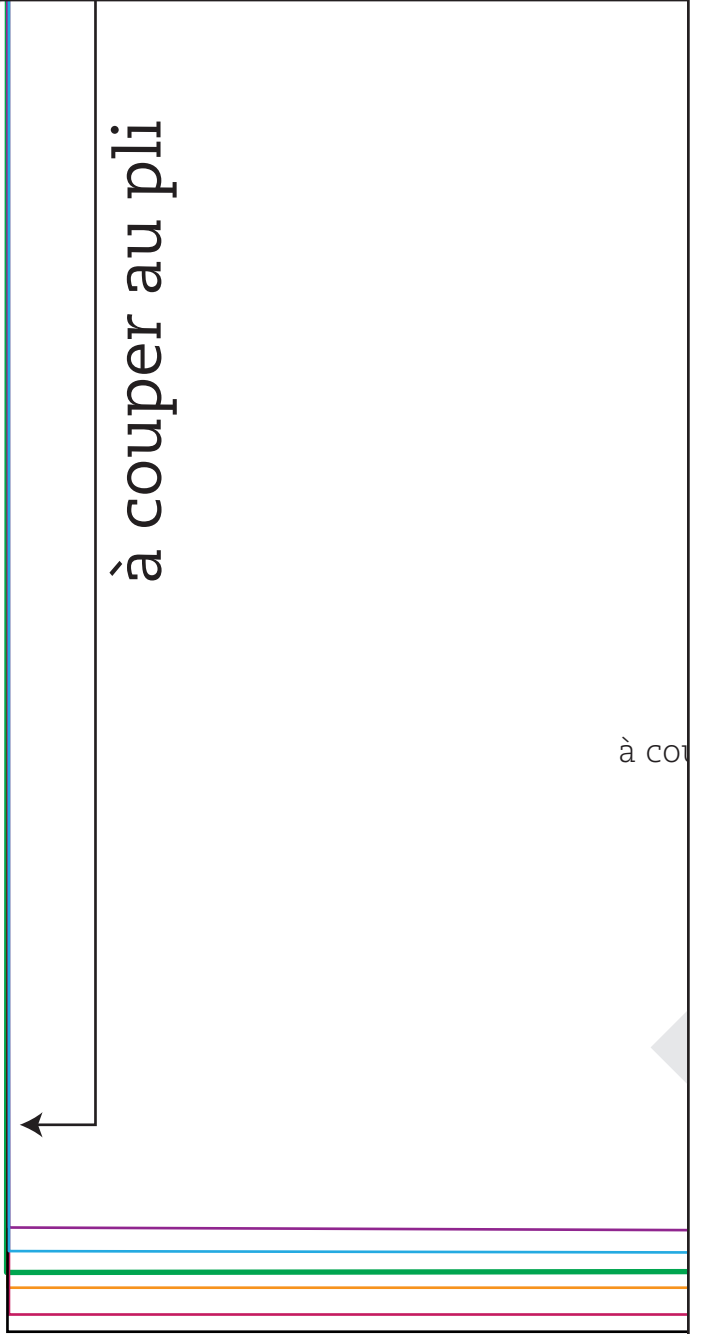
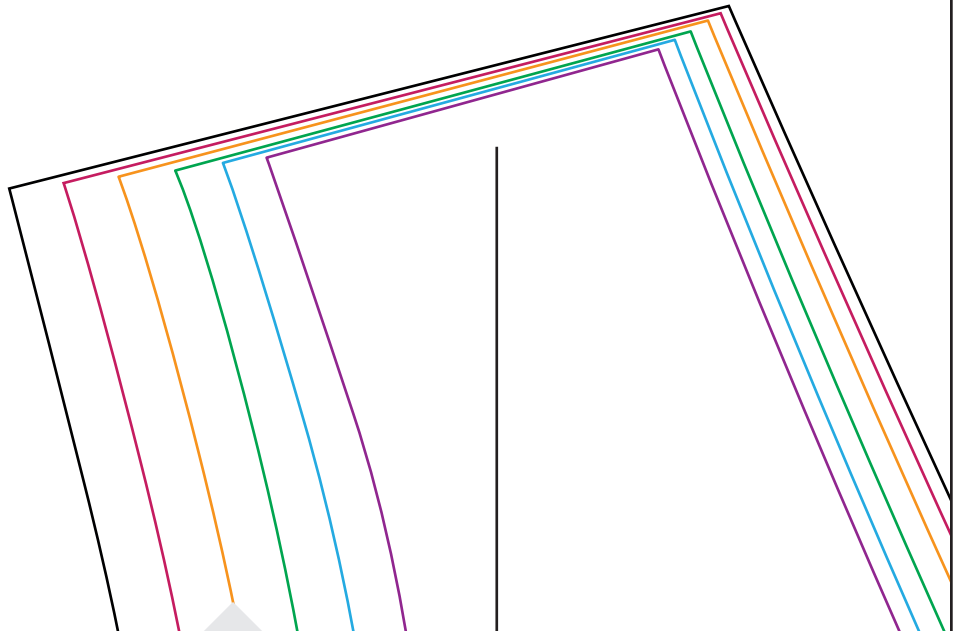
A7



# B1

à couper au pli

à cot



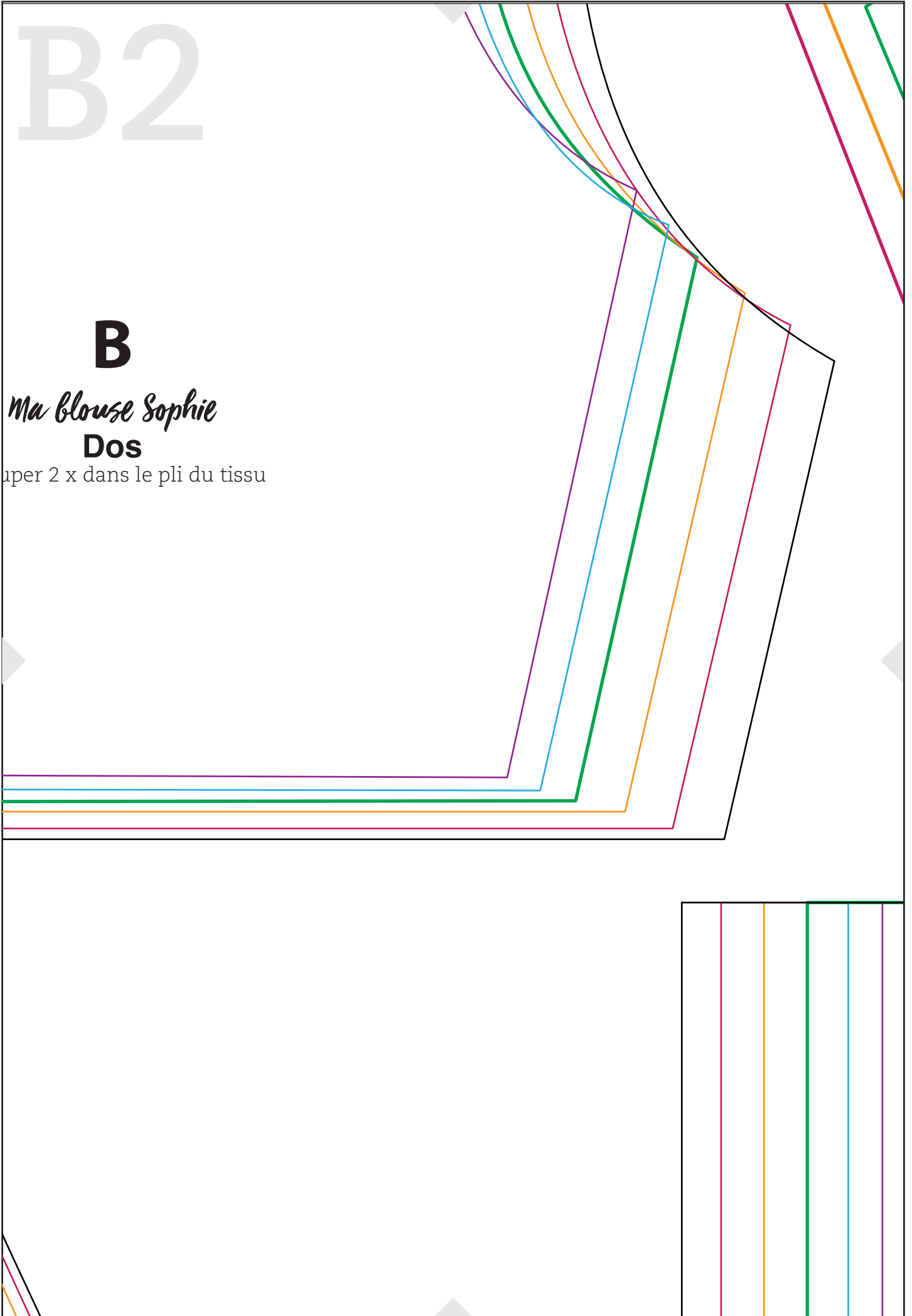
# B2

## B

*Ma Blouse Sophie*

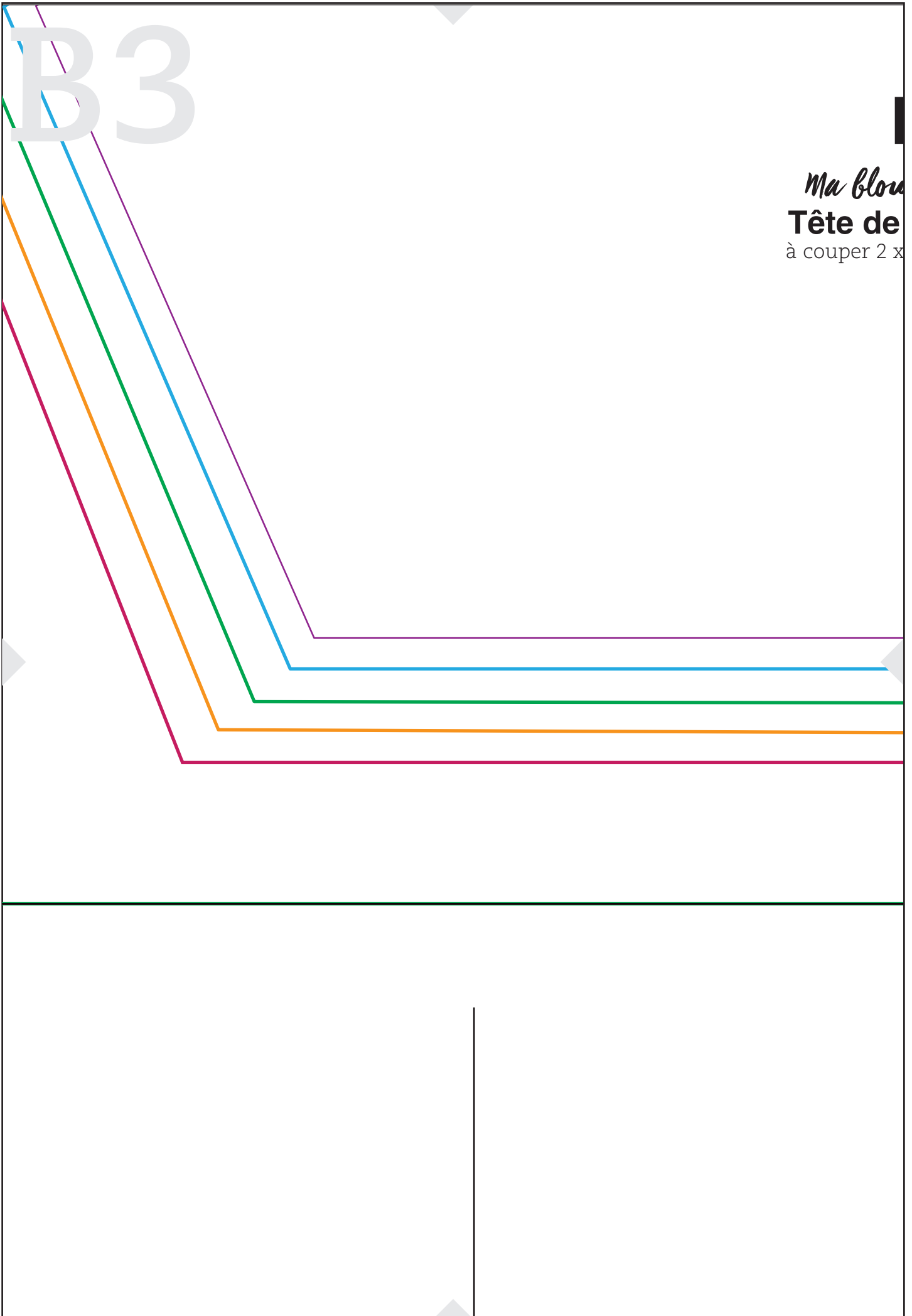
**Dos**

uper 2 x dans le pli du tissu



# B3

*Ma blouse*  
**Tête de**  
à couper 2 x

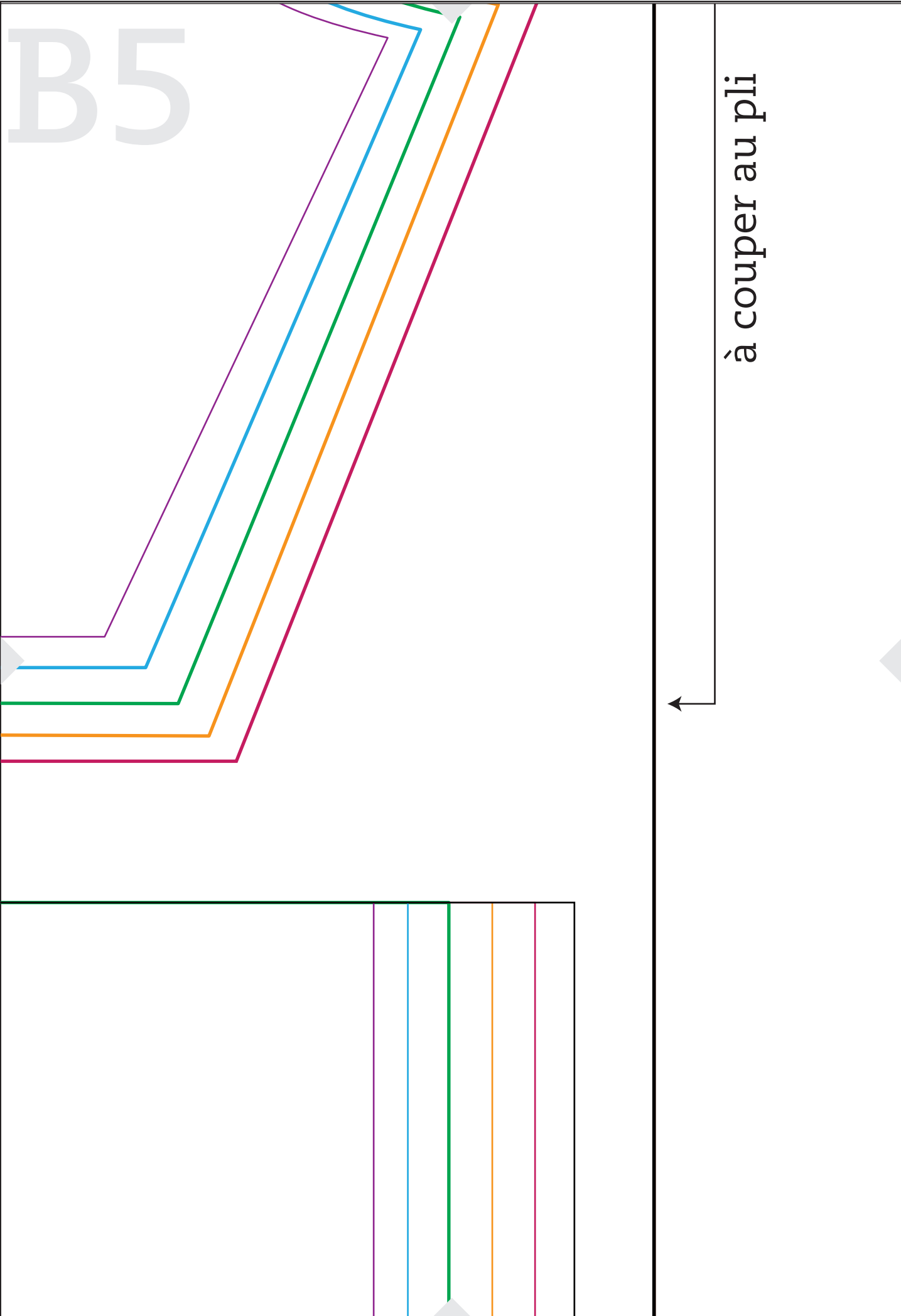


# B4

*se Sophie*  
**manche**  
dans le tissu



B5



à couper au pli

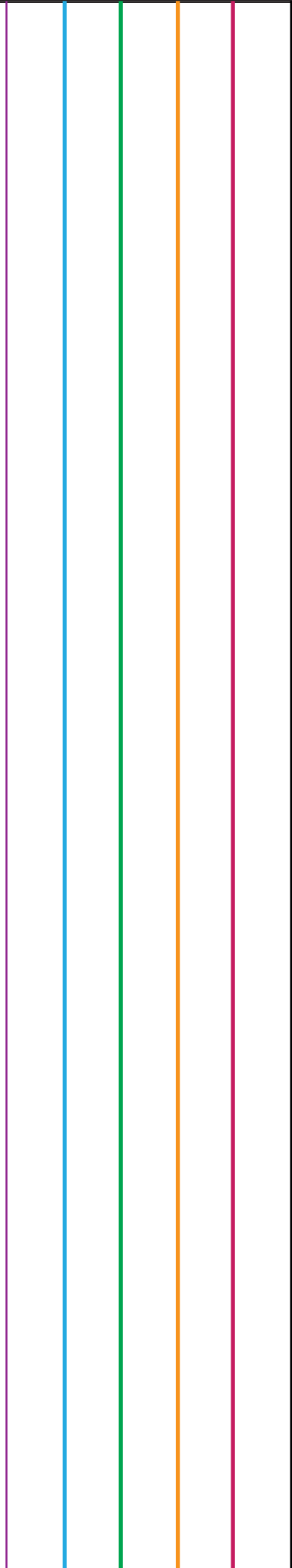
# B6

*Ma blouse*  
**Bas de**  
à couper 2 x

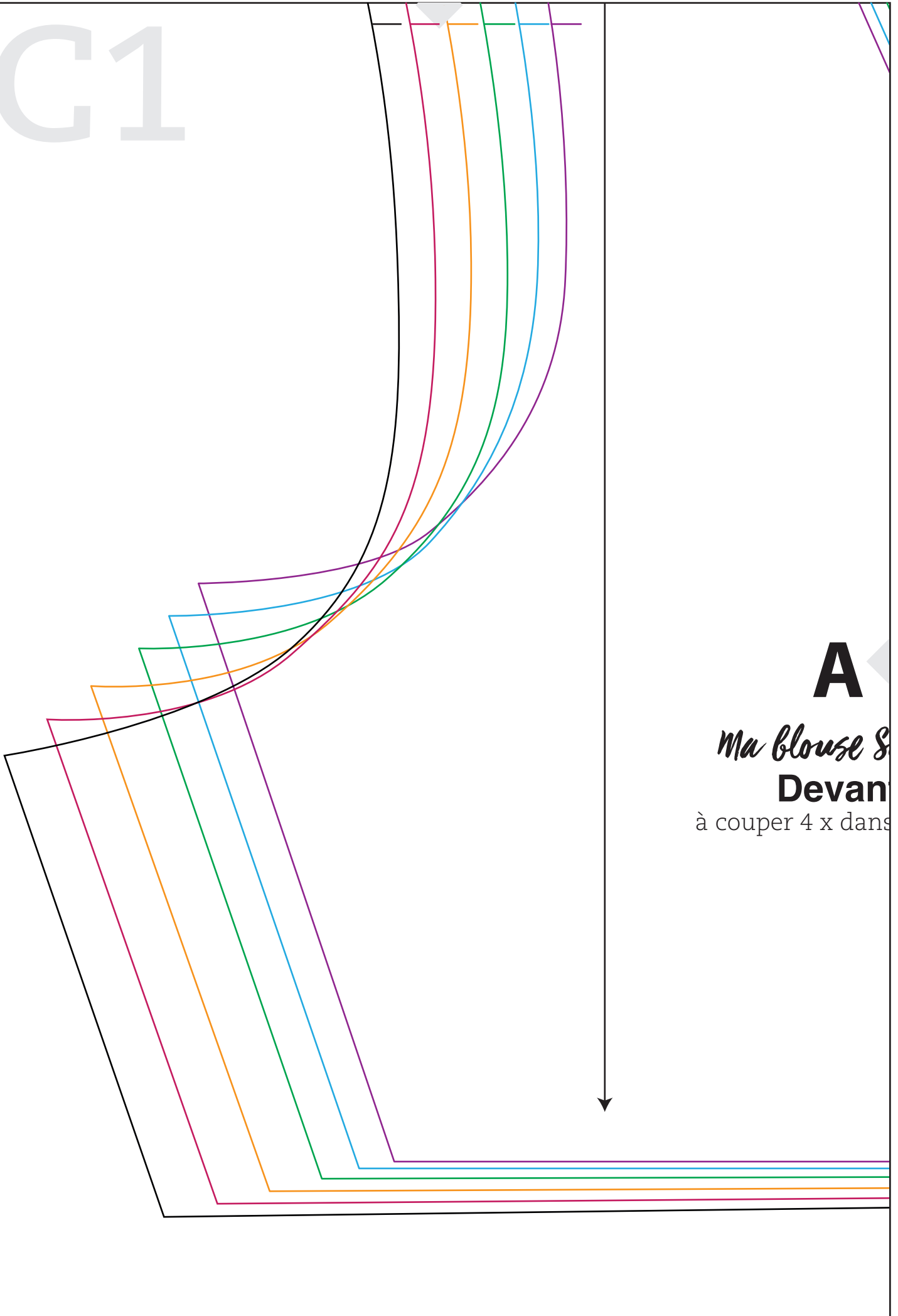
**B7**

*de couleur*

**manche**  
dans le tissu



C1

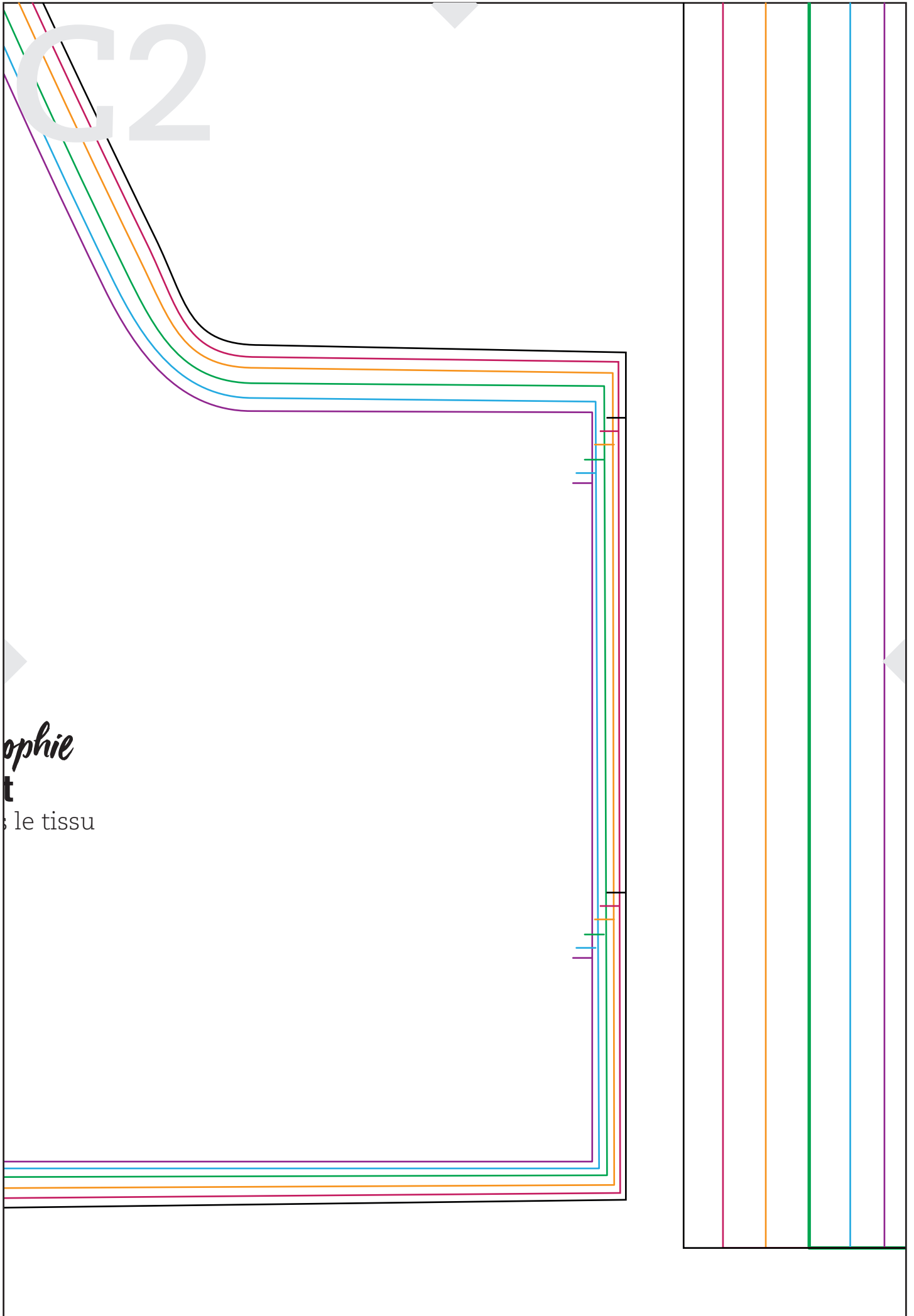


**A**

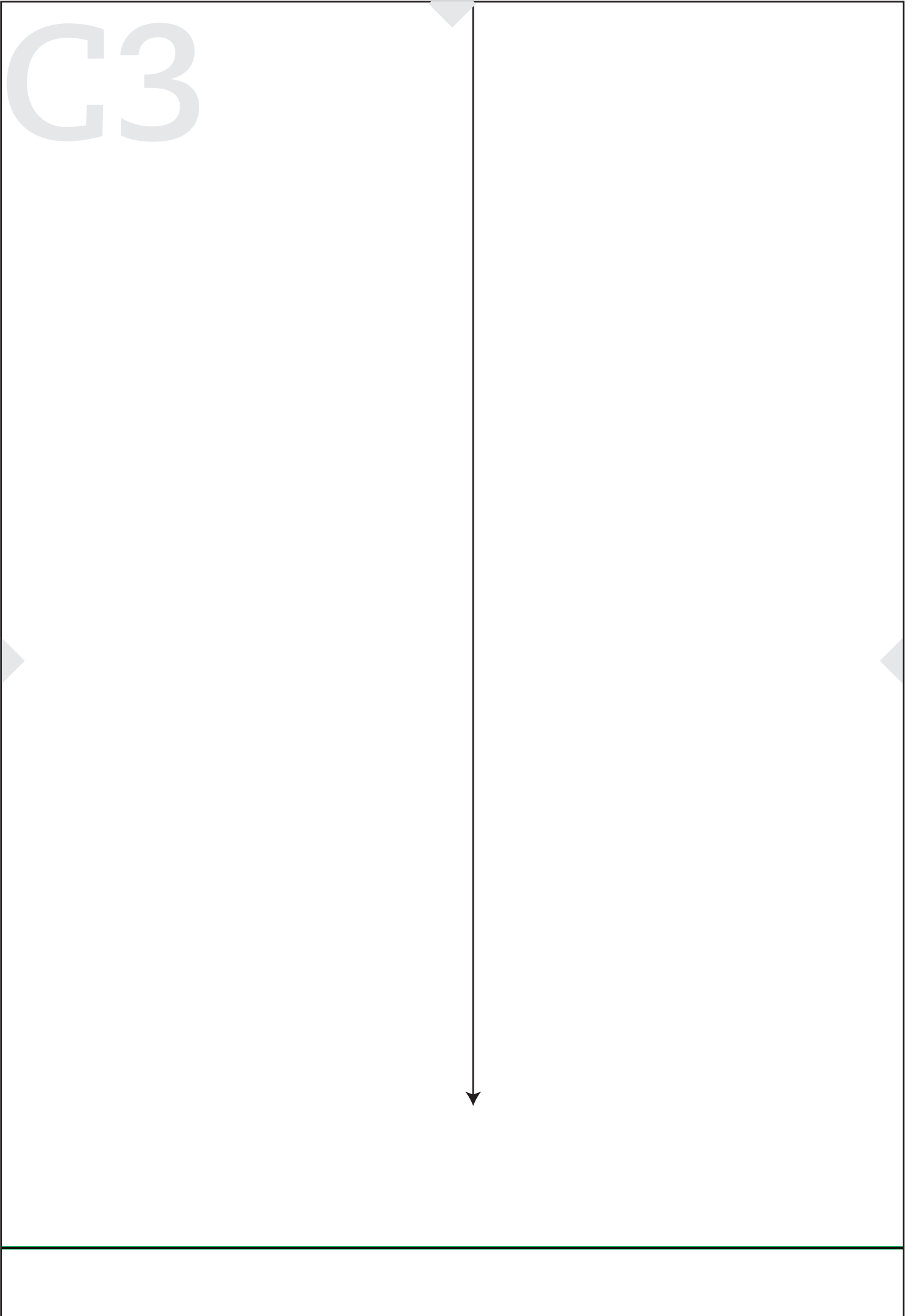
*Ma blouse S*  
**Devant**  
à couper 4 x dans

G2

ophie  
t  
le tissu



C3



C4

**C**

*Ma Blouse Sophie*  
**Basque devant**  
à couper 2 x dans le tissu

C5

--	--	--	--	--





C7



D6



D7

**D**

*Ma Blouse Sophie*

**Basque dos**

à couper 1 x dans le tissu

E6



E7

A set of five horizontal lines in purple, blue, green, orange, and red, with a grey arrow pointing right on the left side of the green line.