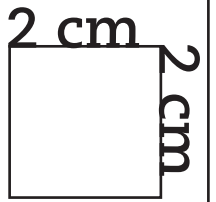


A1

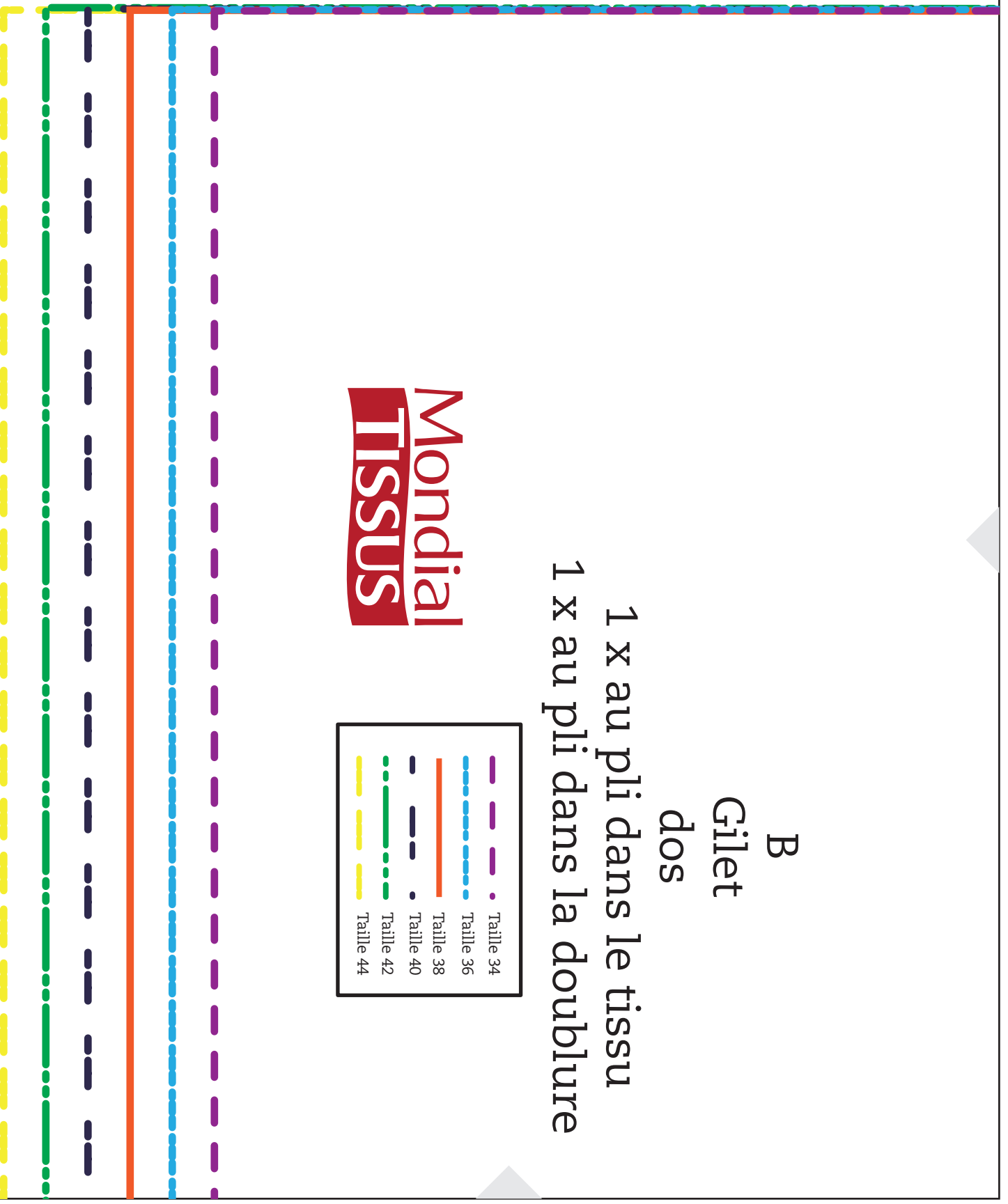
Mon gilet



B
Gilet
dos
1 x au pli dans le tissu
1 x au pli dans la doublure

Mondial
TISSUS

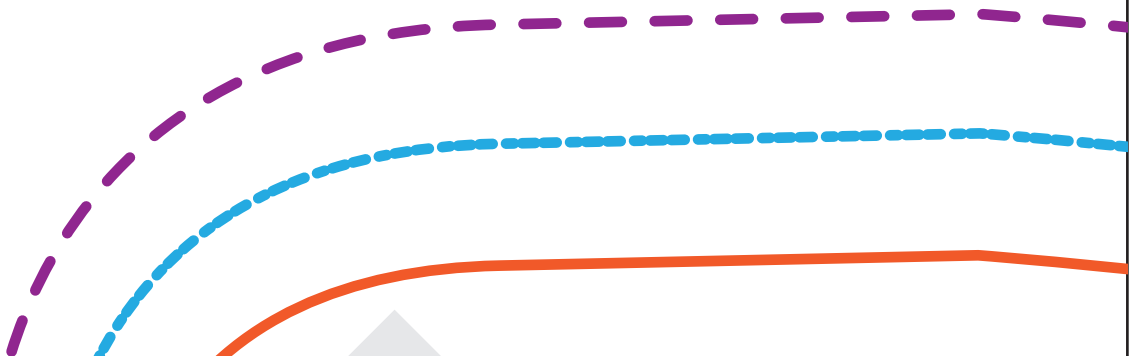
	Taille 34
	Taille 36
	Taille 38
	Taille 40
	Taille 42
	Taille 44



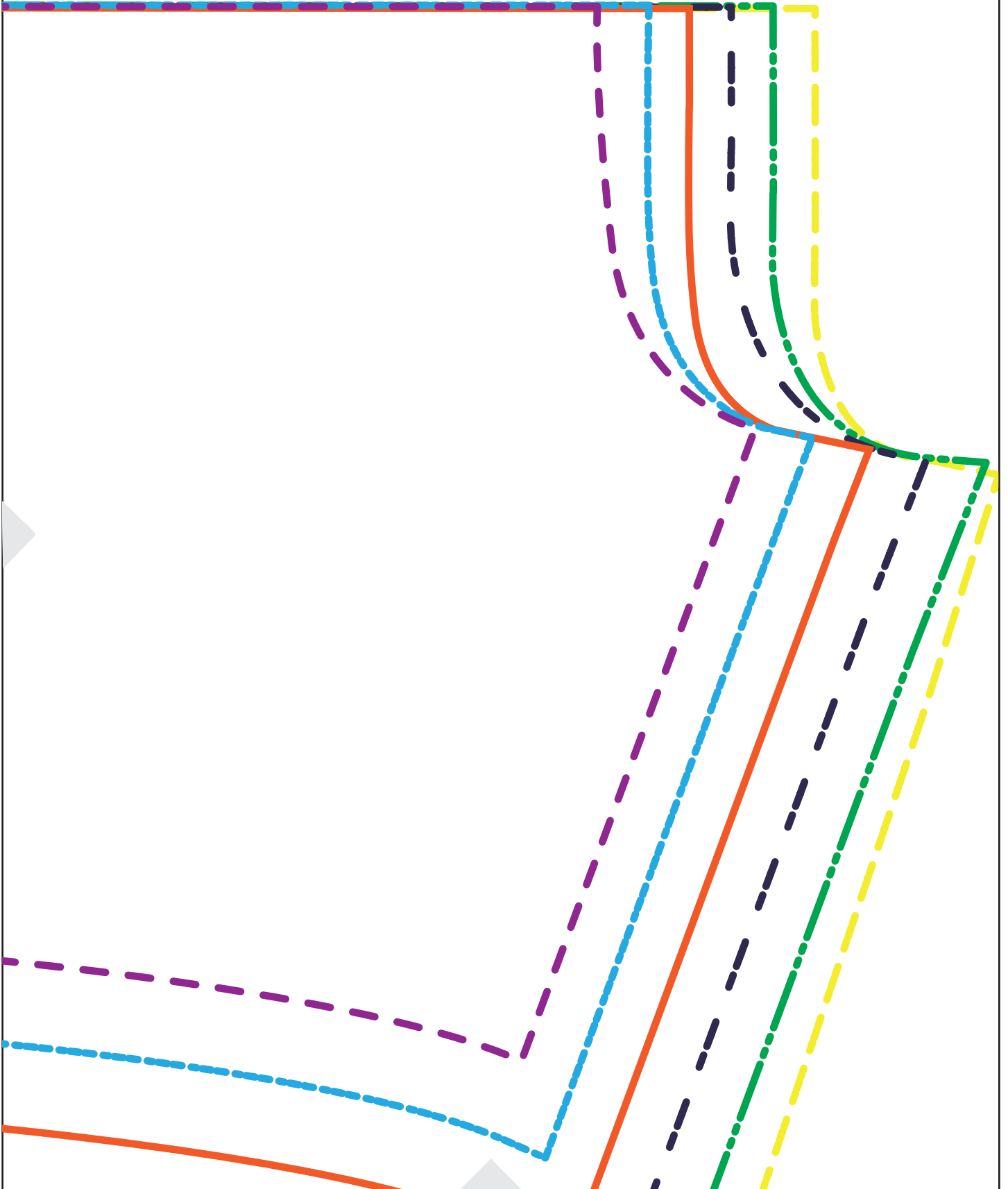
A2

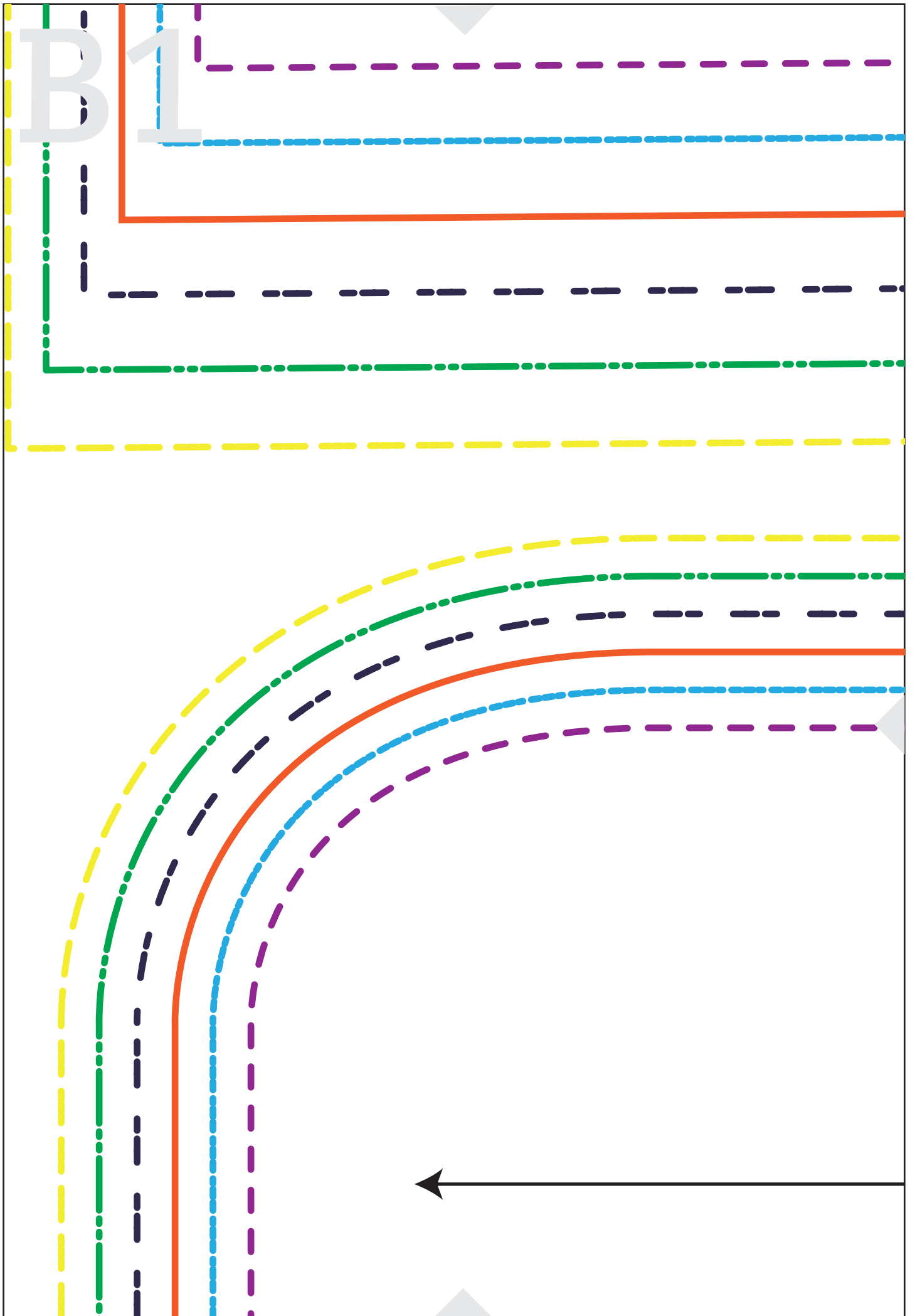


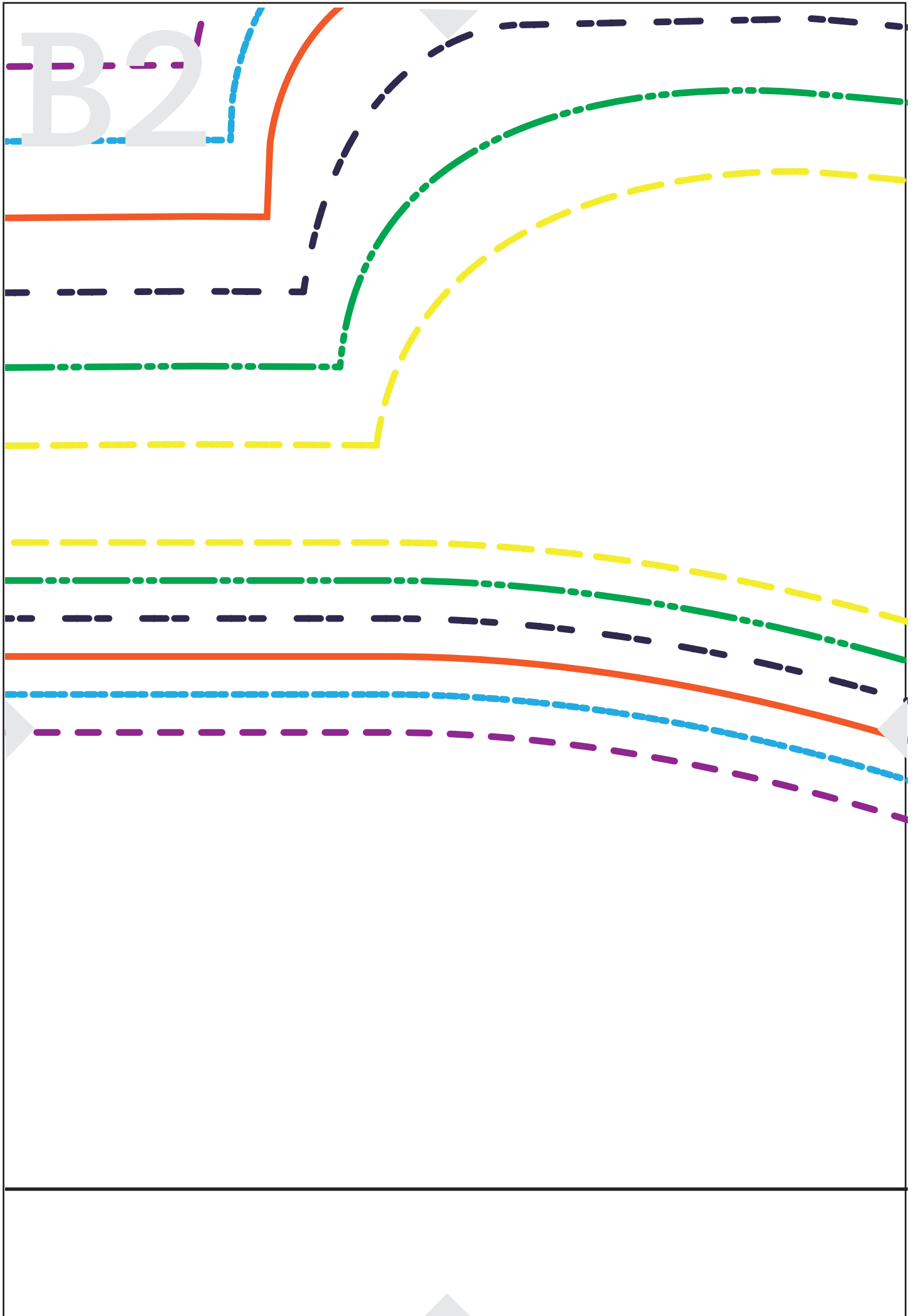
A couper au pli



A3











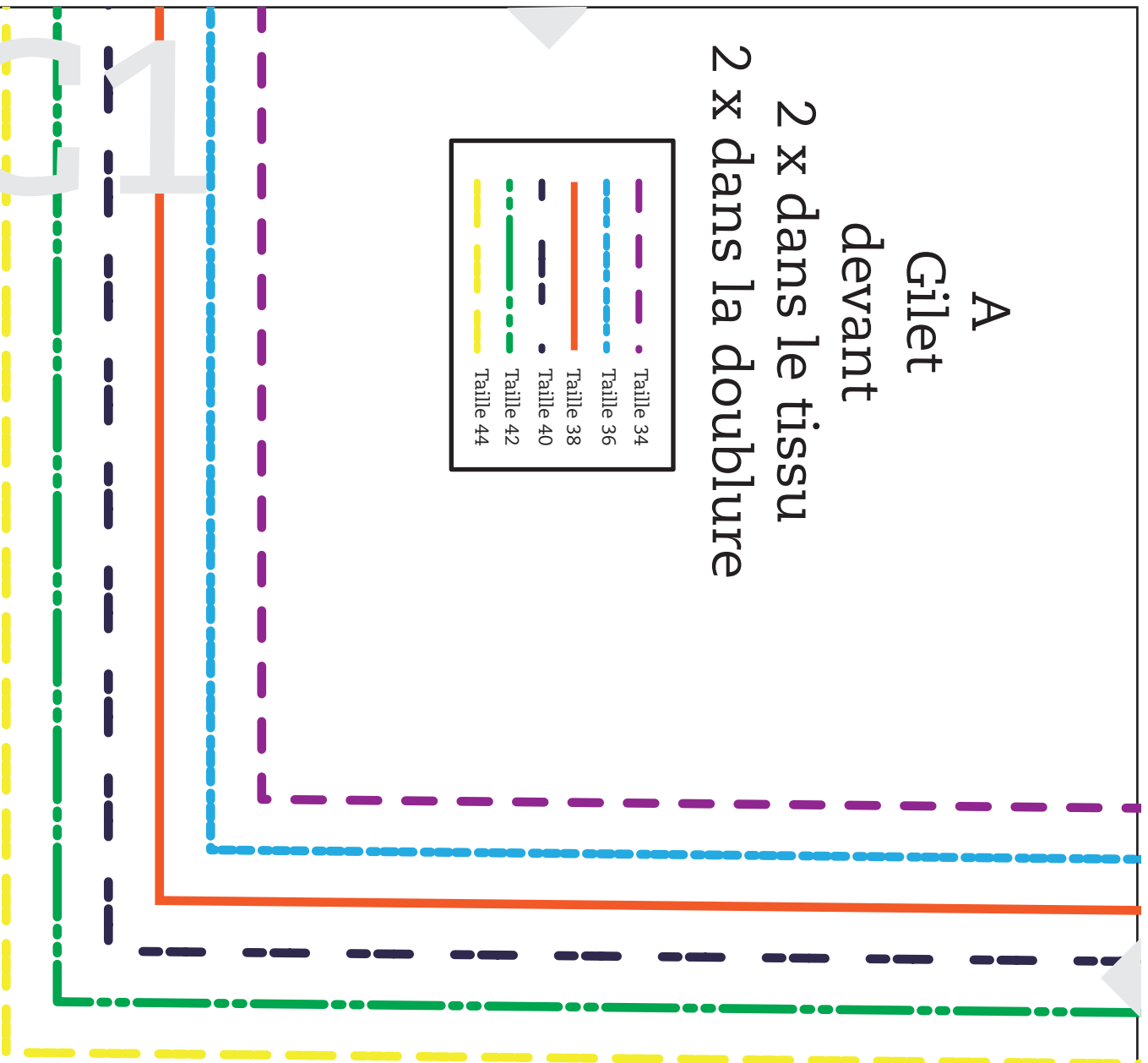




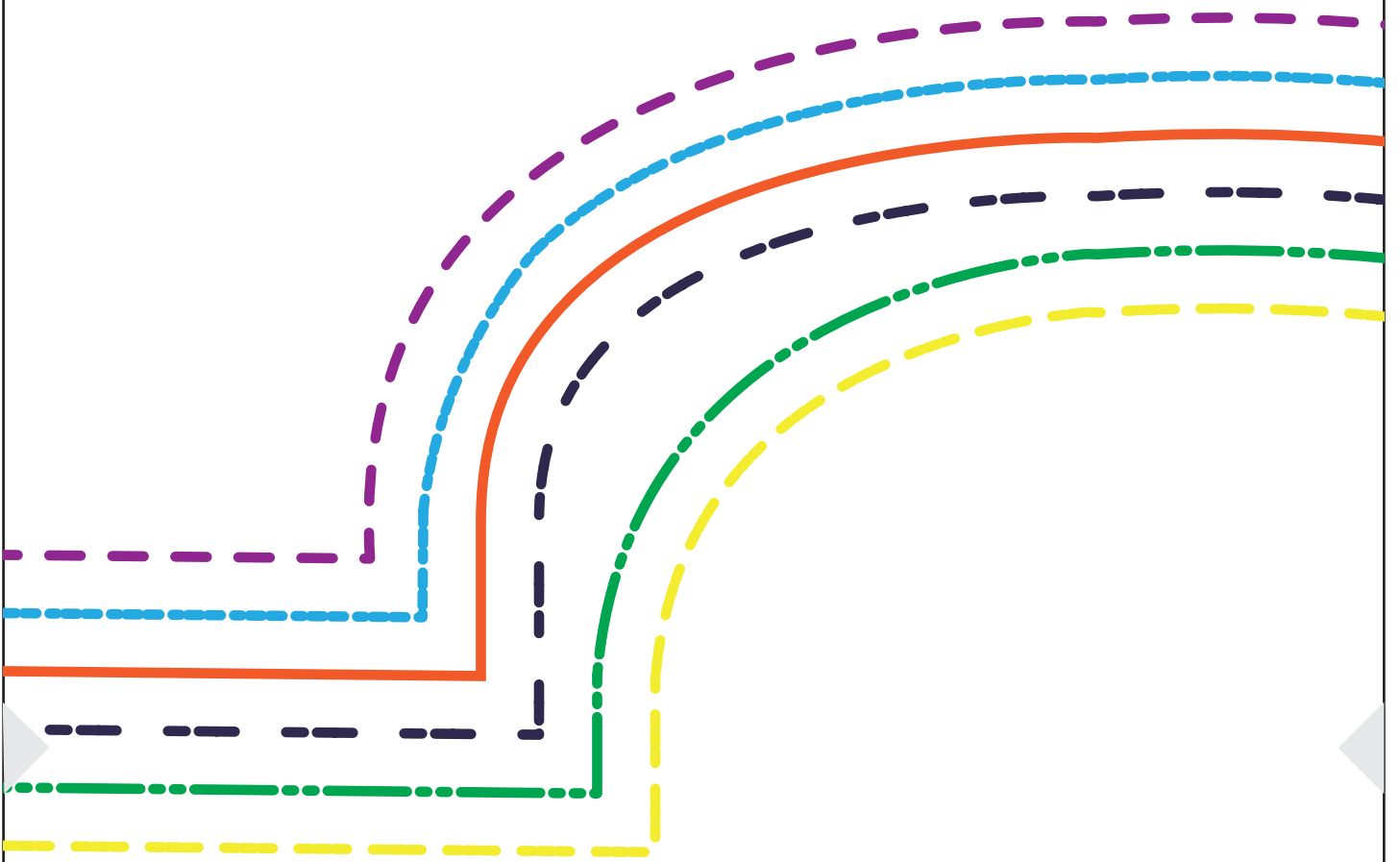
A Gilet devant

2 x dans le tissu
2 x dans la doublure

	Taille 34
	Taille 36
	Taille 38
	Taille 40
	Taille 42
	Taille 44



C2



C3

