

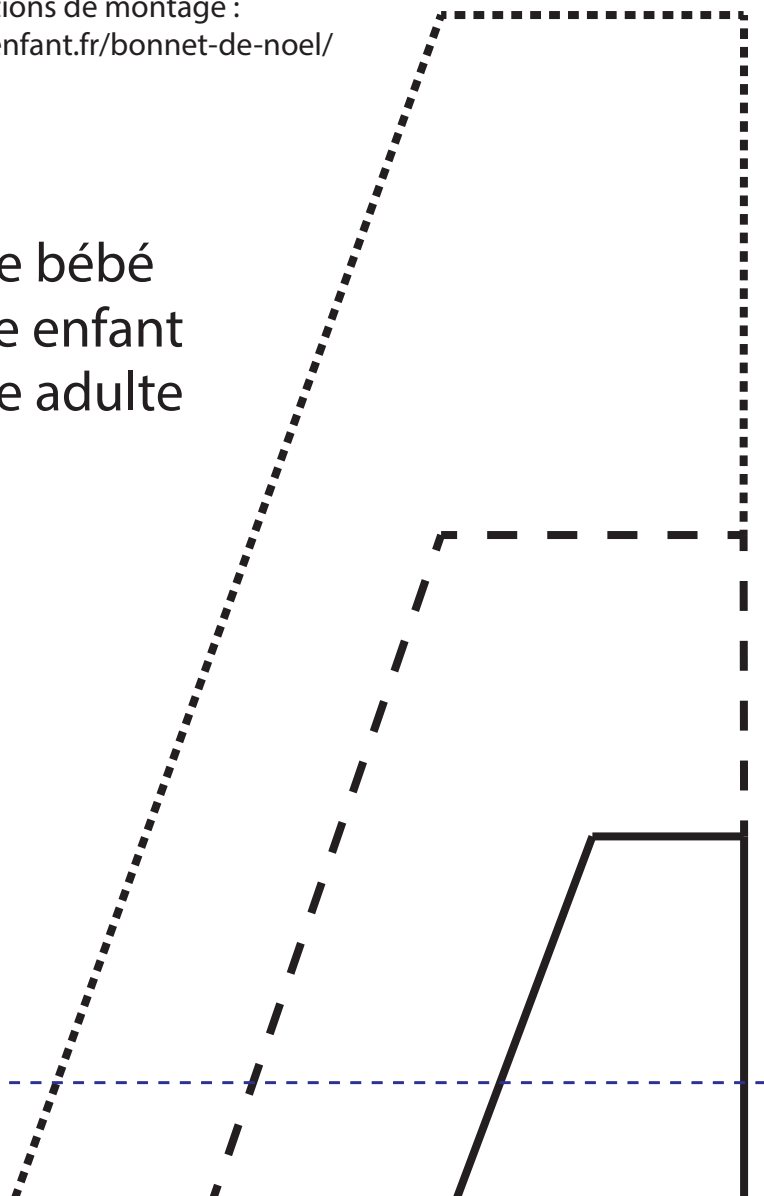


Le Bonnet de Noël

Les marges de couture
(1 cm) sont incluses

Instructions de montage :
www.coutureenfant.fr/bonnet-de-noel/

- Taille bébé
- - - - - Taille enfant
- Taille adulte



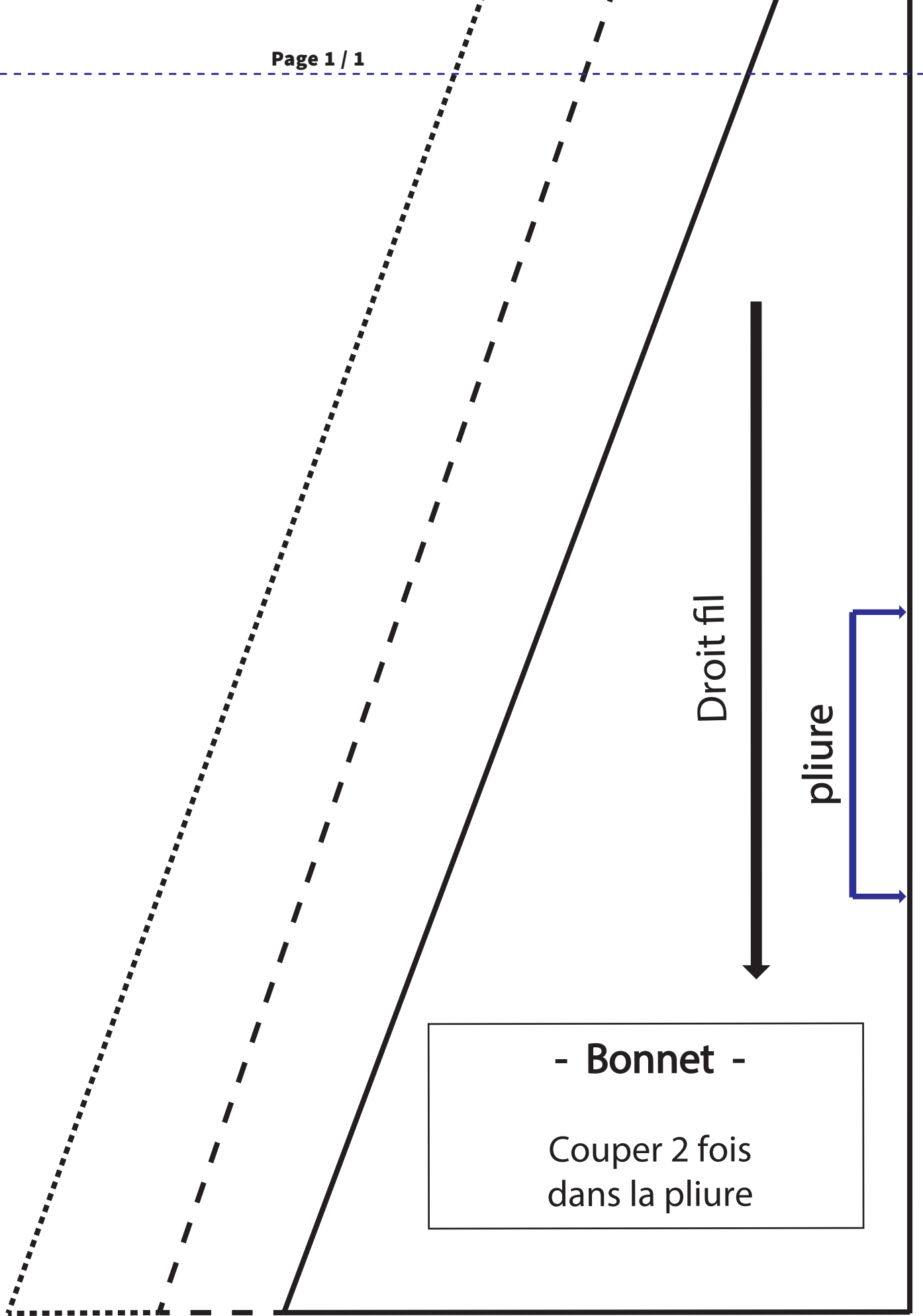
The diagram shows a rectangular pattern piece for a hat. A blue line at the top indicates a fold, labeled 'pliure'. A black arrow points downwards from the center, labeled 'Droit fil', indicating the grain direction. The piece is surrounded by a dashed line representing the cutting line. A text box at the bottom contains instructions for cutting the piece.

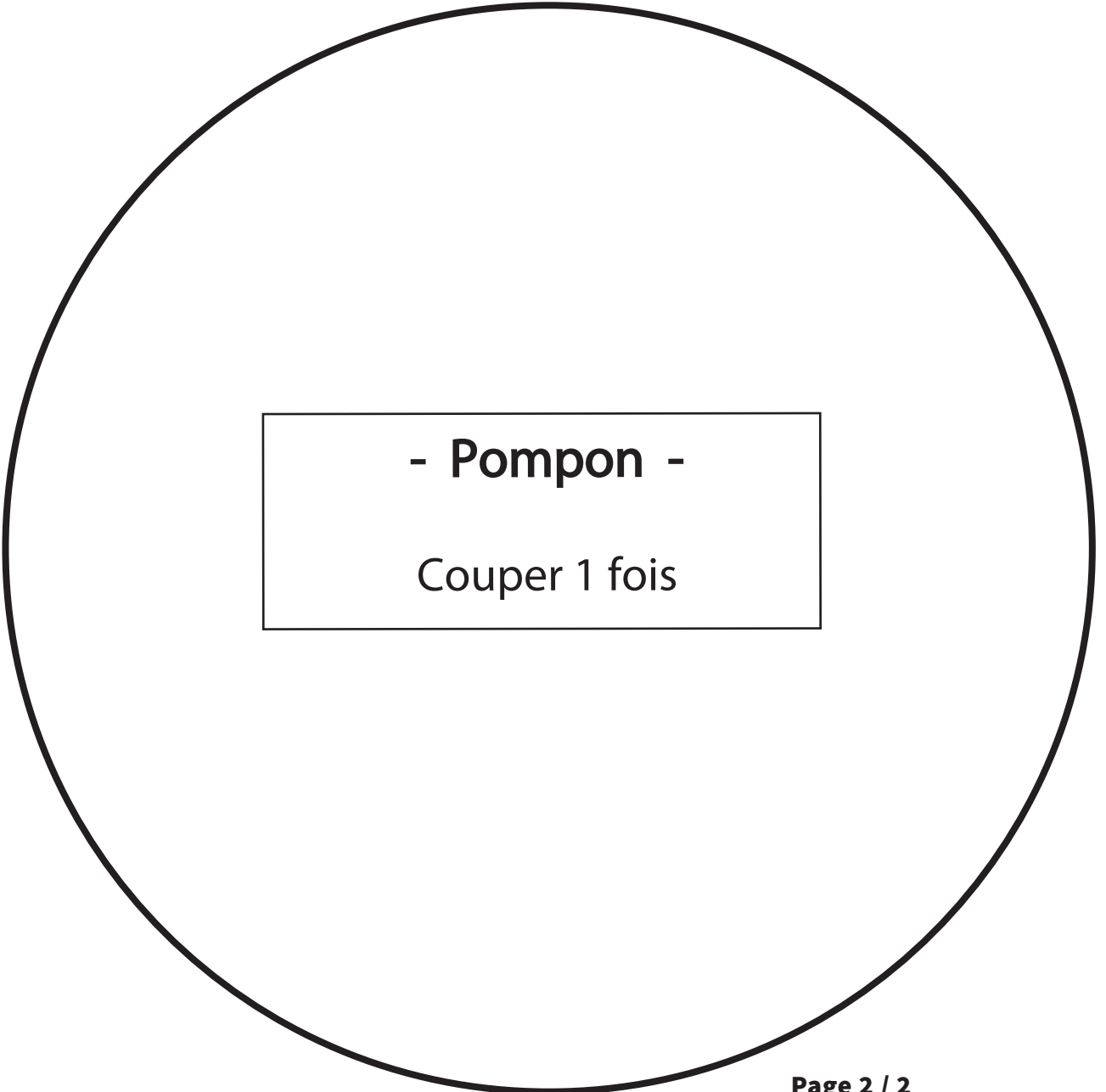
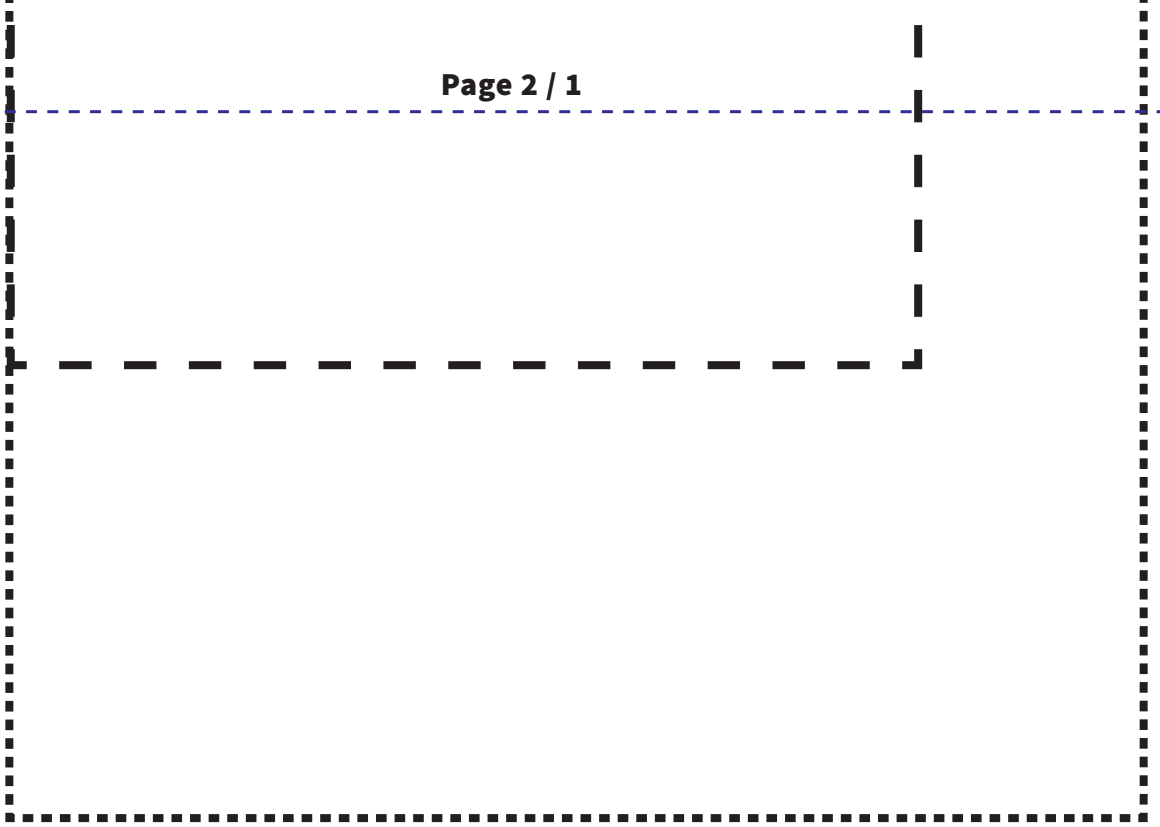
pliure

Droit fil

- Pourtour du bonnet -

Couper 1 fois
dans la pliure





- Pompon -
Couper 1 fois